

Hypertherm[®]

Torch and Consumables Catalog

FOR POWERMAX[®] AND MAX[®] PLASMA SYSTEMS



Hypertherm, Inc.

Etna Road, P.O. Box 5010
Hanover, NH 03755 USA
603-643-3441 Tel (Main Office)
603-643-5352 Fax (All Departments)
info@hypertherm.com (Main Office Email)
800-643-9878 Tel (Technical Service)
technical.service@hypertherm.com (Technical Service Email)
800-737-2978 Tel (Customer Service)
customer.service@hypertherm.com (Customer Service Email)

Hypertherm Automation

5 Technology Drive, Suite 300
West Lebanon, NH 03784 USA
603-298-7970 Tel
603-298-7977 Fax

Hypertherm Plasmatechnik GmbH

Technologiepark Hanau
Rodenbacher Chaussee 6
D-63457 Hanau-Wolfgang, Deutschland
49 6181 58 2100 Tel
49 6181 58 2134 Fax
49 6181 58 2123 (Technical Service)

Hypertherm (S) Pte Ltd.

82 Genting Lane
Media Centre
Annexe Block #A01-01
Singapore 349567, Republic of Singapore
65 6841 2489 Tel
65 6841 2490 Fax
65 6841 2489 (Technical Service)

Hypertherm (Shanghai) Trading Co., Ltd.

Unit A, 5th Floor, Careri Building
432 West Huai Hai Road
Shanghai, 200052
PR China
86-21 5258 3330/1 Tel
86-21 5258 3332 Fax

Hypertherm Europe B.V.

Vaartveld 9
4704 SE
Roosendaal, Nederland
31 165 596907 Tel
31 165 596901 Fax
31 165 596908 Tel (Marketing)
31 165 596900 Tel (Technical Service)
00 800 4973 7843 Tel (Technical Service)

Hypertherm Japan Ltd.

Level 9, Edobori Center Building
2-1-1 Edobori, Nishi-ku
Osaka 550-0002 Japan
81 6 6225 1183 Tel
81 6 6225 1184 Fax

Hypertherm Brasil Ltda.

Avenida Doutor Renato de
Andrade Maia 350
Parque Renato Maia
CEP 07114-000
Guarulhos, SP Brasil
55 11 2409 2636 Tel
55 11 2408 0462 Fax

Hypertherm México, S.A. de C.V.

Avenida Toluca No. 444, Anexo 1,
Colonia Olivar de los Padres
Delegación Álvaro Obregón
México, D.F. C.P. 01780
52 55 5681 8109 Tel
52 55 5683 2127 Fax

Contents

This catalog is broken down into three sections:

Section 1

Hypertherm Powermax and MAX systems reference list

Section 2

Hypertherm technology benefits

Section 3

Torch and consumable brochures by system

Hypertherm handheld systems reference list



Current products		Original torch assembly		Replacement torch assembly		Page
System	Amperage	Hand	Machine	Hand	Machine	
Powermax190c	12 A	PAC105T	N/A	PAC105T	N/A	1
Powermax30	30 A	T30v	N/A	T30v	N/A	3
Powermax45	45 A	T45v	T45m	T45v	T45m	5
Powermax1000	60 A	T60	T60M	T60	T60M	9
Powermax1250	80 A	T80	T80M	T80	T80M	13
Powermax1650	100 A	T100	T100M	T100	T100M T100M-2	17
MAX200	200 A	PAC200T/E	MAX200	PAC200T/E	MAX200	61
RT60 Retrofit for Powermax600 Powermax800 Powermax900 MAX42/43	40 – 55 A	PAC120 PAC121 PAC123 PAC125 T series	PAC120 PAC121 PAC123 PAC125 M series	RT60	RT60M	67
RT80 Retrofit for Powermax1100	80 A	PAC135T	PAC135M	RT80	RT80M	71



Discontinued products		Original torch assembly		Replacement torch assembly		Page
System	Amperage	Hand	Machine	Hand	Machine	
MAX20	20 A	PAC110	N/A	PAC110	N/A	43
Powermax350	25 A	PAC110T	N/A	PAC110T	N/A	23
Powermax380	25 A	PAC110T	N/A	PAC110T	N/A	25
MAX40	40 A	PAC140	HT40	PAC140	HT40	45
MAX40cs	40 A	PAC120P/T	PAC120M	PAC121P/T	PAC121M	49
HT40/HT40C	40 A	HT40	N/A	HT40	N/A	45, 65
MAX42	40 A	PAC120P/T	PAC120M	PAC125T RT60	PAC125M RT60M	49
MAX43	40 A	PAC121P/T	PAC121M	PAC125T RT60	PAC125M RT60M	49
Powermax600	40 A	PAC123T	PAC123M	PAC123T RT60	PAC123M RT60M	27
Powermax800	50 A	PAC121TS	PAC121M	PAC125T RT60	PAC125M RT60M	31
Powermax900	55 A	PAC125T	PAC125M	PAC125T RT60	PAC125M RT60M	35
MAX70	70 A	PAC130	MAX100	PAC130	MAX100	53
Powermax1100	80 A	PAC135T	PAC135M	PAC135T RT80	PAC135M RT80M	39
MAX100	100 A	PAC130	MAX100D	PAC130	MAX100D	53
MAX100D	100 A	PAC160/E	MAX100D	PAC160/E	MAX100D	57

Hypertherm technology benefits

Hypertherm designs consumables for fast cutting speeds, long life, and superior cut quality for high productivity and low operating costs.



Coaxial-assist™ jet boosts cutting speeds as much as 20% over conventional consumables designs.

Vented shield is designed so the shield is electrically isolated from the nozzle to prevent arcing through the shield, enabling drag-cutting up to 100 amps for easy cutting.

Conical Flow™ nozzle technology increases arc energy density for superior cut quality with little dross.

Spiral groove electrodes provide optimal cooling, drawing the 3000° F heat away from the tip of the electrode. This slows electrode wear for longer electrode life.

Contact-start technology eliminates high-frequency interference that can damage nearby electronic equipment.

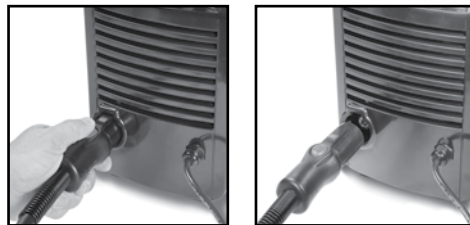
SilverPlus® is a proven technology that dramatically extends electrode life, significantly reducing operating cost.

HyLife® electrode extends consumable life and lowers operating cost.

Dielectric shield protects the nozzle from slag and double-arcing for improved nozzle life. The thin wall of the shield improves operator visibility for more precise cutting.

FineCut® consumables are used for high-quality cuts on thin metal – a clean and narrow kerf.

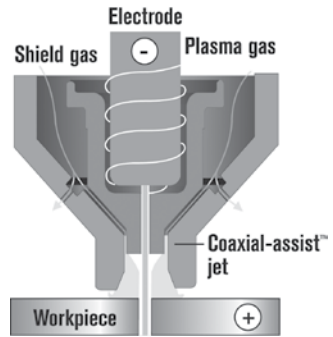
Chambered swirl ring gradually reduces gas pressure at the end of the cut to stabilize the hafnium insert prior to arc termination; this extends nozzle and electrode life.



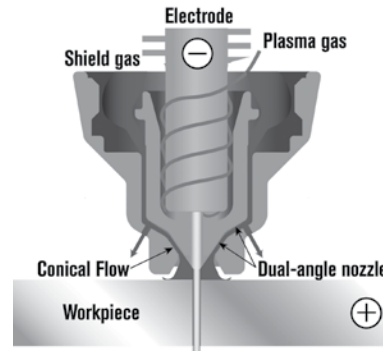
Powermax systems feature a **FastConnect** torch for easy switching between handheld and mechanized cutting.

Note: Technologies vary by product. Refer to product pages.

Coaxial-assist jet



Conical Flow

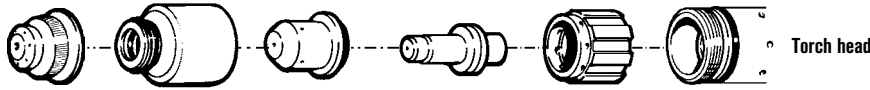


Hypertherm® powermax190c

PAC105T hand torch consumables

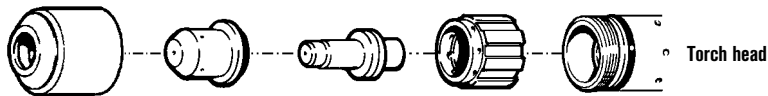


Shielded consumables



	Shield	Retaining cap	Nozzle	Electrode	Swirl ring
Package quantity	1	1	5	5	1

Unshielded* consumables



	Retaining cap	Nozzle	Electrode	Swirl ring
Package quantity	1	5	5	1



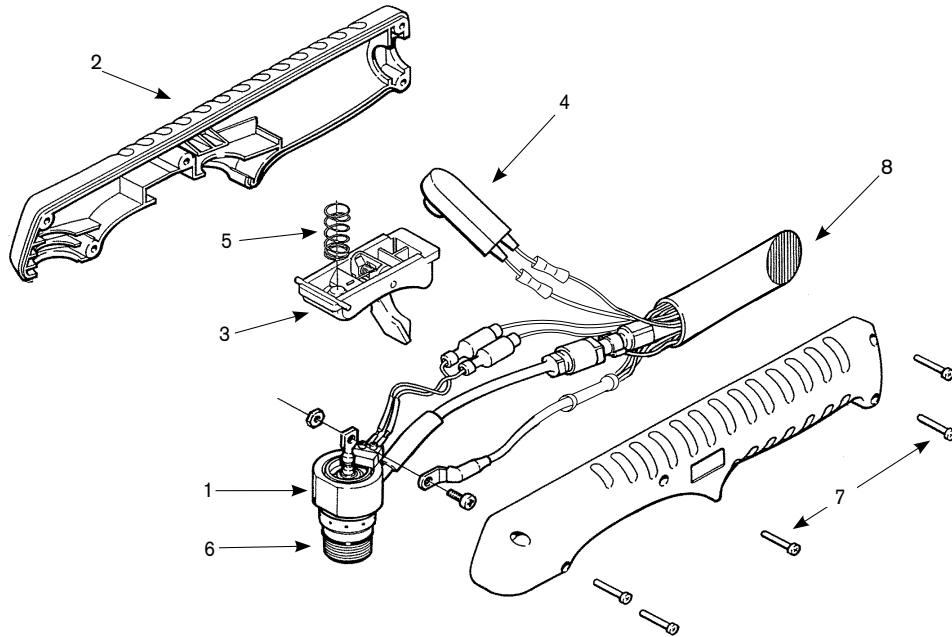
TECHNOLOGIES

Vented shield™

* In countries following CE standards, unshielded consumables may only be used in mechanized torch applications. Unshielded consumables: maintain torch-to-work distance of approximately .080" (2 mm).

powermax190c

PAC105T hand torch assembly



Assembly

	Part number	Description
	128833*	PAC105 hand torch assembly with 20' (6.1 m) leads
1.	120874	Torch main body with switch
2.	001288	Handle (includes both halves)
3.	002244	Safety trigger assembly
4.	005202	Switch, torch pushbutton
5.	027254	Trigger spring
6.	058503	O-ring, Viton .625 x .070
7.	075339	Screws #4 x 1/2" (five required)
8.	128478	Torch lead replacement, 20' (6.1 m)
	060133	Work lead with clamp 15' (4.6 m)

*Assembly includes consumables

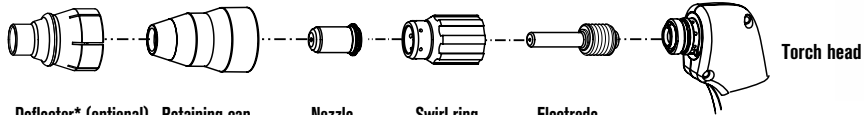


Hypertherm® powermax30®

T30v hand torch consumables



Standard consumables



	Deflector* (optional)	Retaining cap	Nozzle	Swirl ring	Electrode
Package quantity	1	1	5	1	5

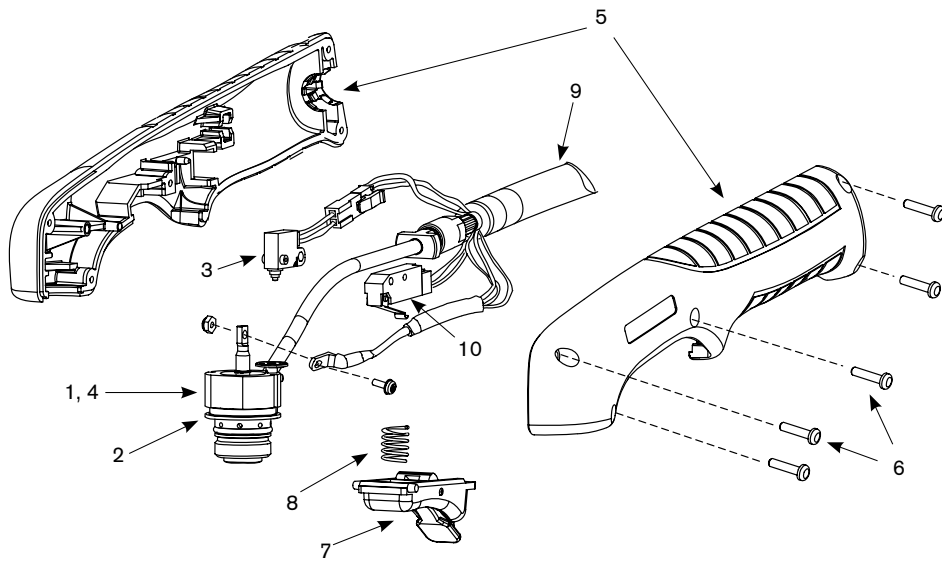


TECHNOLOGIES

Dielectric shield

* Optional deflector may be used to help maintain torch-to-work distance or may be used as a guide when cutting with templates.

T30v hand torch assembly



Assembly

	Part number	Description
1.	228112	Kit: T30v main body replacement
2.	058503	O-ring: Viton .626 x .070
3.	228109	Kit: Cap-off sensor replacement
4.	228110	Kit: T30v torch head repair
5.	228111	Kit: T30v torch handle replacement
6.	075339	Handle screws
7.	002244	Safety trigger
8.	027254	Spring
9.	228113	Kit: T30v 15' (4.6 m) torch lead replacement
10.	128642	Kit: T30v start switch replacement
	123868	Work lead with clamp, 15' (4.6 m)

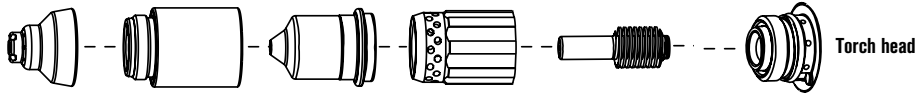


Hypertherm® powermax45®

T45v hand torch consumables

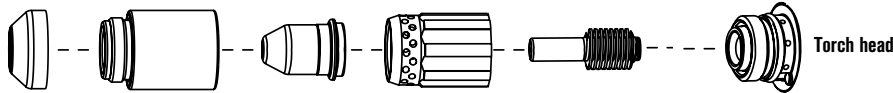


Shielded consumables



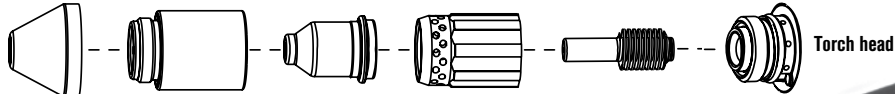
	Shield	Retaining cap	Nozzle	Swirl ring	Electrode
Package quantity	1	1	5	1	5

Unshielded* consumables



	Deflector	Retaining cap	Nozzle	Swirl ring	Electrode
Package quantity	1	1	5	1	5

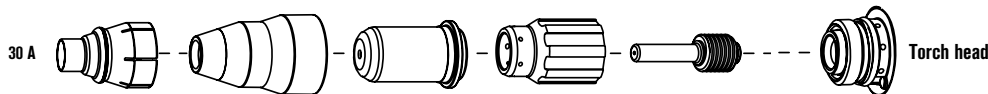
Gouging consumables



	Shield	Retaining cap	Nozzle	Swirl ring	Electrode
Package quantity	1	1	5	1	5



T30v consumables**



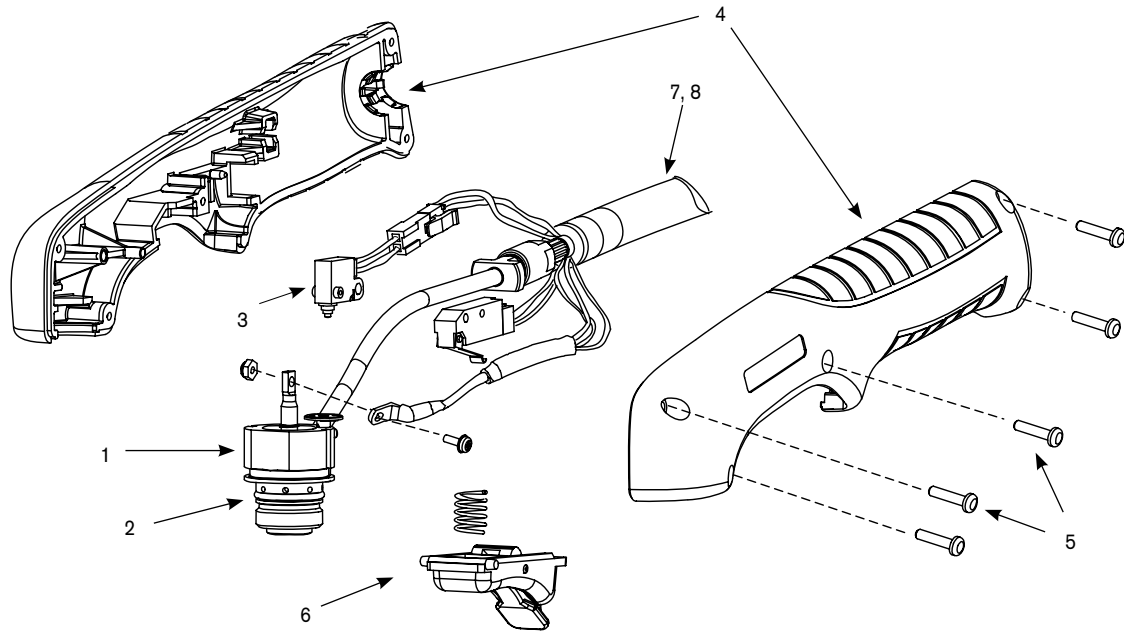
	Deflector (optional)	Retaining cap	Nozzle	Swirl ring	Electrode
Package quantity	1	1	5	1	5

TECHNOLOGIES

Dielectric shield
FastConnect™
Vented shield
Conical Flow

* In countries following CE standards, unshielded consumables may only be used in mechanized torch applications. Unshielded consumables: maintain torch-to-work distance of approximately .080" (2 mm).
** Use T30v 30 A consumables for 30 A fine-feature cutting on thin metals.

T45v hand torch assembly



Assembly

Part number	Description
088008*	T45v hand torch assembly with 20' (6.1 m) leads
088009*	T45v hand torch assembly with 50' (15.2 m) leads
1. 228346	Kit: Torch body replacement
2. 058503	O-ring: torch body
3. 228109	Kit: Cap-sensor switch replacement
4. 228313	Kit: Handle
5. 075714	Screws, #4 x 1/2 SLTD Torx PAN, S/B
6. 002294	Safety trigger and spring replacement
7. 228315	Kit: Torch lead replacement, 20' (6.1 m)
8. 228316	Kit: Torch lead replacement, 50' (15.2 m)
228300	Work lead with clamp, 20' (6.1 m)
228307	Work lead with clamp, 50' (15.2 m)

*Assembly includes consumables

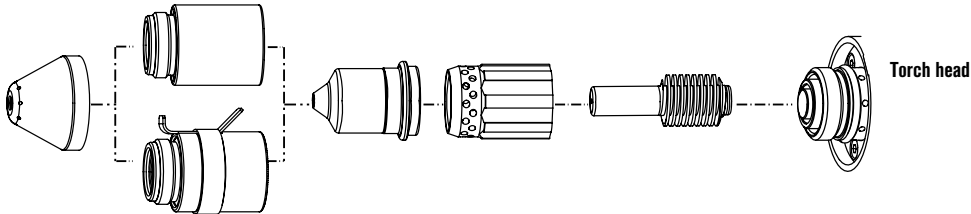


Hypertherm® powermax45®

T45m machine torch consumables

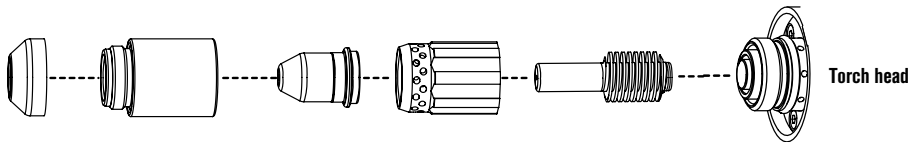


Shielded consumables



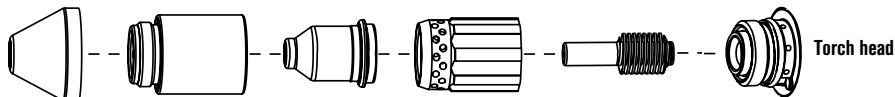
	Shield	Retaining cap	Nozzle	Swirl ring	Electrode
	220673	220713	220671	220670	220669
	Ohmic	220719			
Package quantity	1	1	5	1	5

Unshielded* consumables



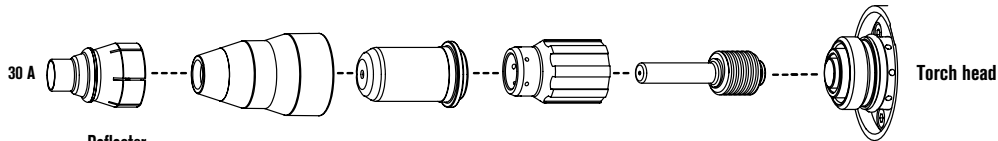
	Deflector	Retaining cap	Nozzle	Swirl ring	Electrode
	220717	220713	220718	220670	220669
Package quantity	1	1	5	1	5

Gouging consumables



	Shield	Retaining cap	Nozzle	Swirl ring	Electrode
	220675	220713	220672	220670	220669
Package quantity	1	1	5	1	5

T30v consumables



	Deflector (optional)	Retaining cap	Nozzle	Swirl ring	Electrode
	30 A 220569	220483	220480	220479	220478
Package quantity	1	1	5	1	5



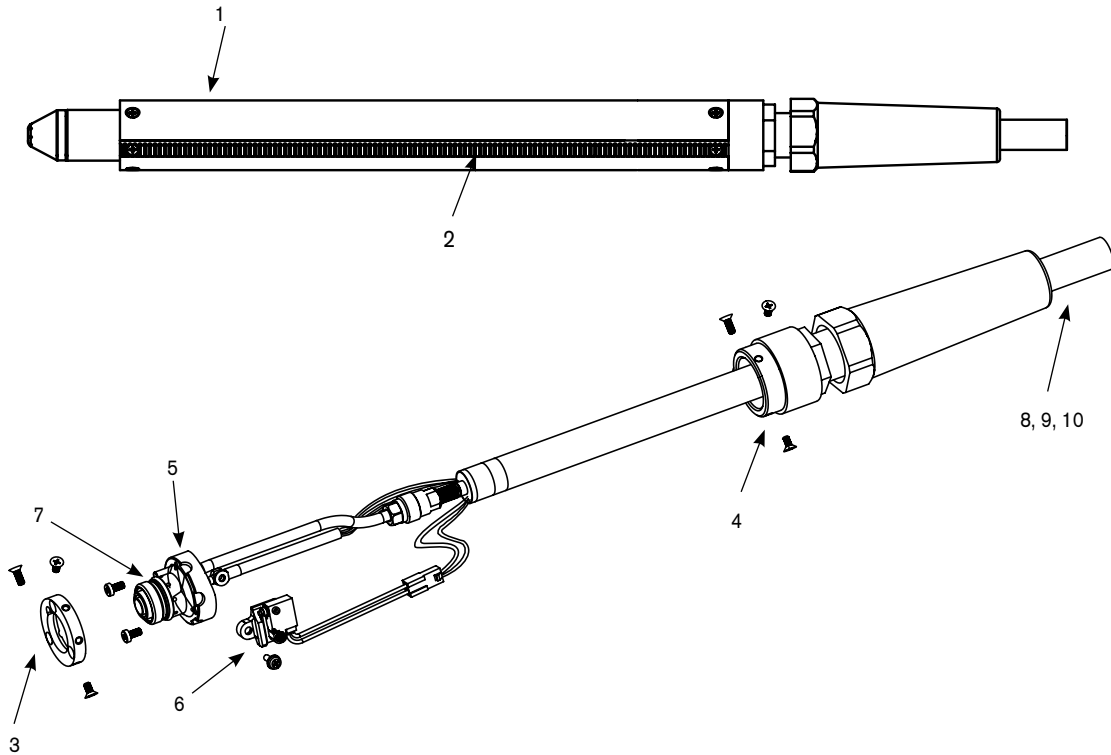
TECHNOLOGIES

Dielectric shield
FastConnect™
Vented shield
Conical Flow

* In countries following CE standards, unshielded consumables may only be used in mechanized torch applications. Unshielded consumables: maintain torch-to-work distance of approximately .080" (2 mm).

Hypertherm and Powermax are trademarks of Hypertherm, Inc. and may be registered in the United States and/or other countries.

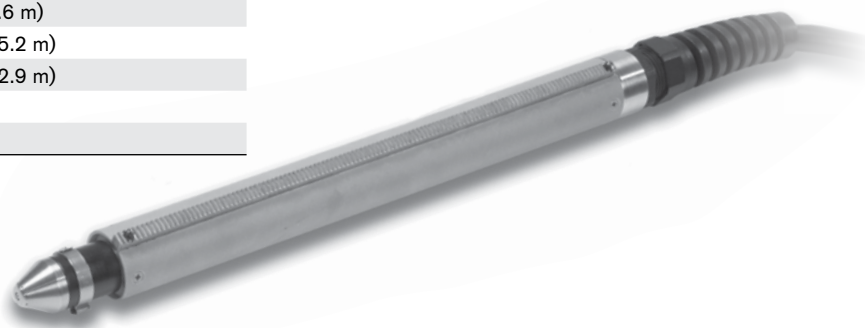
T45m machine torch assembly



Assembly

Part number	Description
088010*	T45m machine torch assembly with 25' (7.6 m) leads
088011*	T45m machine torch assembly with 35' (10.7 m) leads
088012*	T45m machine torch assembly with 50' (15.2 m) leads
1. 228228	Kit: T45m positioning sleeve
2. 228229	Kit: T45m removable gear rack
3. 228322	Kit: Front mounting ring
4. 228323	Kit: Rear mounting ring
5. 228320	Kit: T45m torch body replacement
6. 228321	Kit: T45m cap-sensor switch replacement
7. 058503	O-ring: torch body
8. 228317	T45m torch lead replacement, 25' (7.6 m)
9. 228318	T45m torch lead replacement, 35' (10.7 m)
10. 228319	T45m torch lead replacement, 50' (15.2 m)
128650	On/Off pendant for machine torch, 25' (7.6 m)
128651	On/Off pendant for machine torch, 50' (15.2 m)
128652	On/Off pendant for machine torch, 75' (22.9 m)
228300	Work lead with clamp, 20' (6.1 m)
228307	Work lead with clamp, 50' (15.2 m)

*Assembly includes consumables



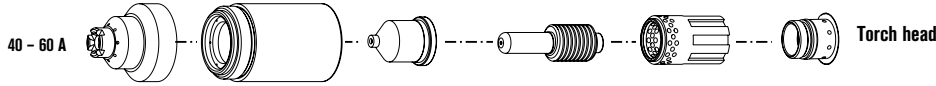
Hypertherm®

powermax1000® G3 SERIES™

T60 hand torch consumables

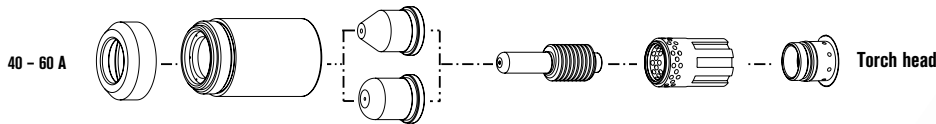


Shielded consumables



	Shield	Retaining cap	Nozzle	Electrode	Swirl ring
40 A	120929	120928	120932	120926	120925
60 A	120929	120928	120931	120926	120925
Package quantity	1	1	5	5	1

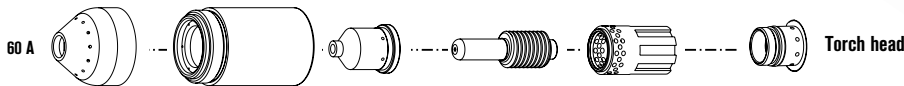
Unshielded* consumables



	Deflector	Retaining cap	Nozzle	Electrode	Swirl ring
40 A	120979	120928	220006	120926	120925
60 A	120979	120928	220007	120926	120925
Package quantity	1	1	5	5	1

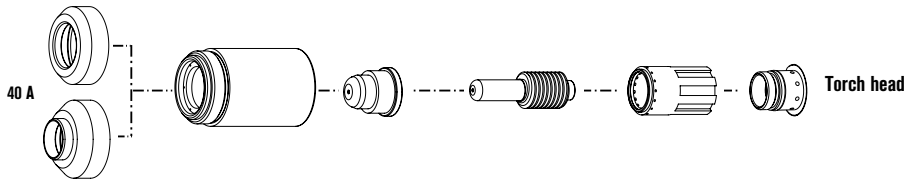


Gouging consumables



	Shield	Retaining cap	Nozzle	Electrode	Swirl ring
60 A	120977	120928	220059	120926	120925
Package quantity	1	1	5	5	1

FineCut consumables



	Deflector	Retaining cap	Nozzle	Electrode	Swirl ring
40 A	120979	120928	220329	120926	220327
40 A CE**	220325	120928	220329	120926	220327
Package quantity	1	1	5	5	1

TECHNOLOGIES

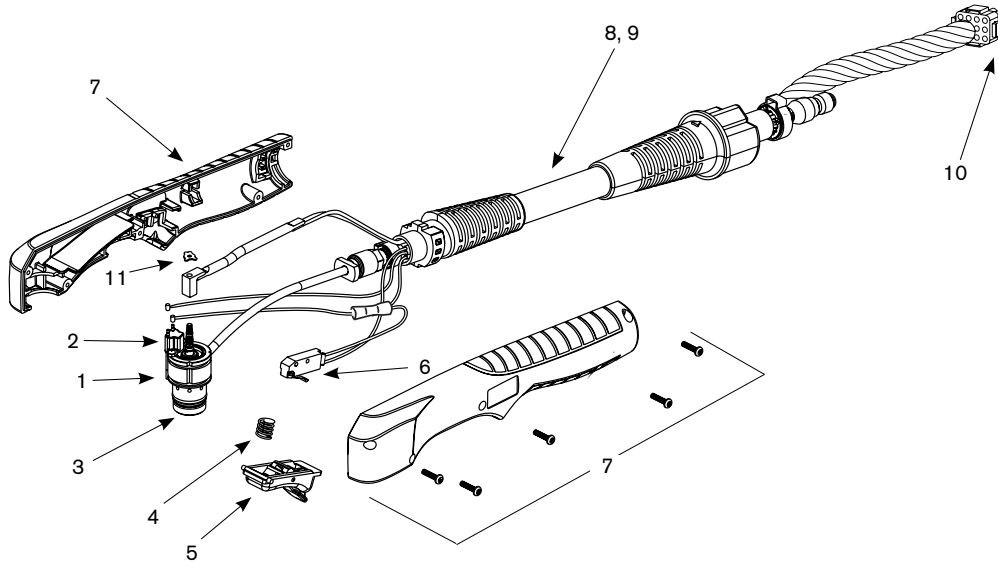
FineCut®
Coaxial-assist™ jet
Vented shield
Spiral groove
HyLife®

* In countries following CE standards, unshielded consumables may only be used in mechanized torch applications. Unshielded consumables: maintain torch-to-work distance of approximately .080" (2 mm).

** CE shield for use in countries requiring CE, CCC, GOST marks.

powermax1000

T60 hand torch assembly



Assembly

Part number	Description
083172*	T60 hand torch assembly with 25' (7.6 m) leads
083171*	T60 hand torch assembly with 50' (15.2 m) leads
083210*	T60 hand torch assembly with 75' (22.9 m) leads
059309*	Test torch with 6' (1.8 m) leads
1. 128564	Kit: T60/T80 torch main body replacement (does not include cap sensor)
2. 128639	Kit: Cap sensor switch replacement
075571	Cap-off sensor screws
3. 128521	Kit: T60/T80, T60M/T80M torch head repair (does not include head)
4. 027254	Trigger spring
5. 002244	Safety trigger assembly
6. 128642	Kit: T60/T80 start switch replacement
7. 128644	Kit: T60/T80 torch handle replacement
8. 128681	Kit: T60 lead replacement, 25' (7.6 m)
9. 128682	Kit: T60 lead replacement, 50' (15.2 m)
10. 128638	Kit: ETR connector repair (regional repair centers only)
11. 027889	Retaining clip
123645	Work lead with clamp, 20' (6.1 m)
128717	Work lead with clamp, 50' (15.2 m)

*Assembly includes consumables



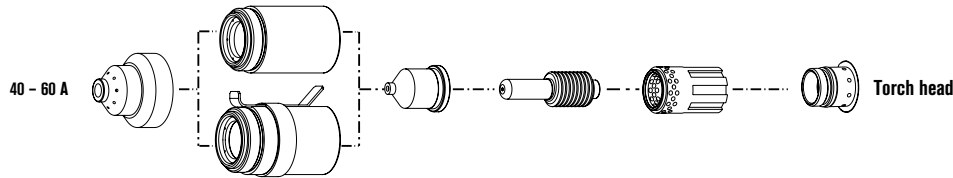
Hypertherm®

powermax1000® G3 SERIES™

T60M machine torch consumables

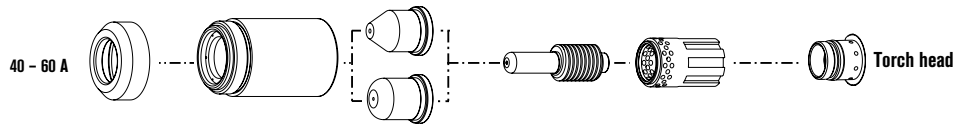


Shielded consumables



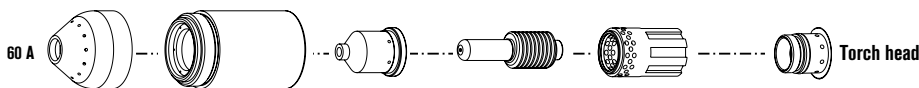
	Shield	Retaining cap	Nozzle	Electrode	Swirl ring
40 A	120930	120928	120932	120926	120925
60 A	120930	120928	120931	120926	120925
Ohmic		220061			
Package quantity	1	1	5	5	1

Unshielded* consumables



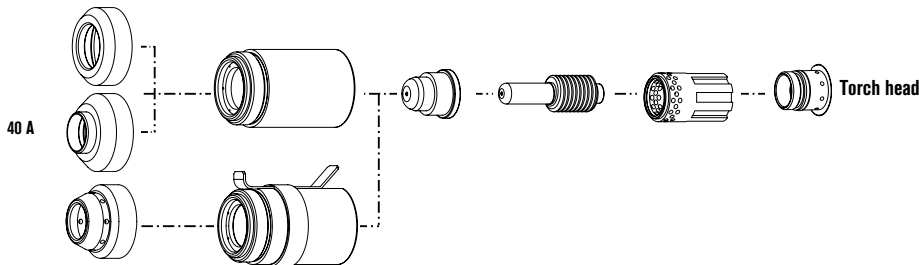
	Deflector	Retaining cap	Nozzle	Electrode	Swirl ring
40 A	120979	120928	220006	120926	120925
60 A	120979	120928	220007	120926	120925
Package quantity	1	1	5	5	1

Gouging consumables



	Shield	Retaining cap	Nozzle	Electrode	Swirl ring
60 A	120977	120928	220059	120926	120925
Package quantity	1	1	5	5	1

FineCut consumables



	Shield / Deflector	Retaining cap	Nozzle	Electrode	Swirl ring
40 A	120979	120928	220329	120926	120925
40 A CE	220325	120928	220329	120926	120925
Ohmic	220404	220061			
Package quantity	1	1	5	5	1



TECHNOLOGIES

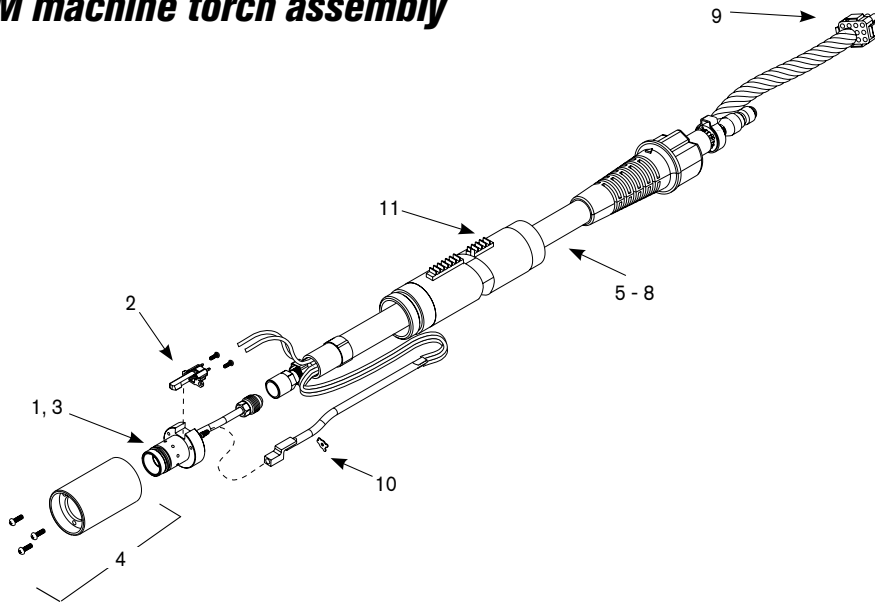
FineCut®
Coaxial-assist™ jet
Vented shield
Spiral groove
HyLife®

* In countries following CE standards, unshielded consumables may only be used in mechanized torch applications. Unshielded consumables: maintain torch-to-work distance of approximately .080" (2 mm).

Hypertherm, Powermax, FineCut, Coaxial-assist and HyLife are trademarks of Hypertherm, Inc. and may be registered in the United States and/or other countries.

powermax1000

T60M machine torch assembly



Assembly

Part number	Description
083175*	T60M machine torch assembly with 15' (4.6 m) leads
083174*	T60M machine torch assembly with 25' (7.6 m) leads
083176*	T60M machine torch assembly with 35' (10.7 m) leads
083177*	T60M machine torch assembly with 50' (15.2 m) leads
083212*	T60M machine torch assembly with 75' (22.9 m) leads
059309*	Test torch with 6' (1.8 m) leads
128645	Kit: Torch mounting
1. 128640	Kit: T60M/T80M torch main body replacement (does not include cap sensor)
2. 128639	Kit: Cap sensor switch replacement
075571	Cap-off sensor screws
3. 128521	Kit: T60/T80, T60M/T80M torch head repair (does not include head)
4. 128643	Kit: T60M/T80M mounting sleeve replacement
5. 128634	Kit: T60M/T80M lead replacement, 15' (4.6 m)
6. 128633	Kit: T60M/T80M lead replacement, 25' (7.6 m)
7. 128635	Kit: T60M/T80M lead replacement, 35' (10.7 m)
8. 128641	Kit: T60M/T80M lead replacement, 50' (15.2 m)
9. 128638	Kit: ETR connector repair (regional repair centers only)
10. 027889	Retaining clip
11. 128710	Kit: T60/T80M positioning sleeve replacement
128650	On/Off pendant for machine torch, 25' (7.6 m)
128651	On/Off pendant for machine torch, 50' (15.2 m)
128652	On/Off pendant for machine torch, 75' (22.9 m)
123645	Work lead with clamp, 20' (6.1 m)
128717	Work lead with clamp, 50' (15.2 m)

*Assembly includes consumables



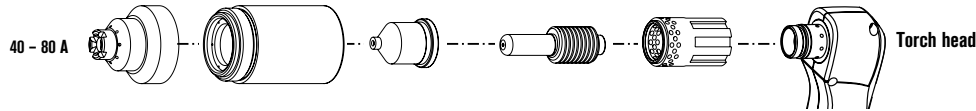
Hypertherm®

powermax1250™ G3 SERIES™

T80 hand torch consumables

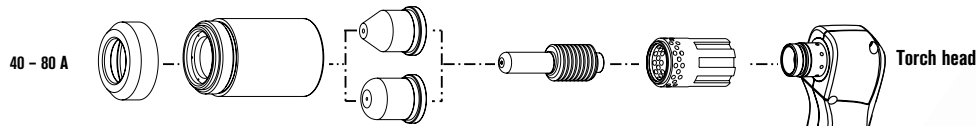


Shielded consumables



	Shield	Retaining cap	Nozzle	Electrode	Swirl ring
40 - 80 A					
40 A	120929	120928	120932	120926	120925
60 A	120929	120928	120931	120926	120925
80 A	120929	120928	120927	120926	120925
Package quantity	1	1	5	5	1

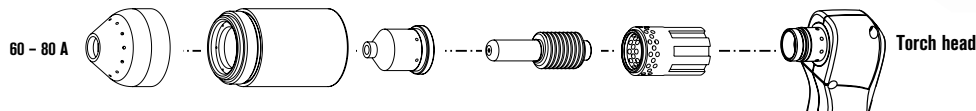
Unshielded* consumables



	Deflector	Retaining cap	Nozzle	Electrode	Swirl ring
40 - 80 A					
40 A	120979	120928	220006	120926	120925
60 A	120979	120928	220007	120926	120925
80 A	120979	120928	120980	120926	120925
Package quantity	1	1	5	5	1

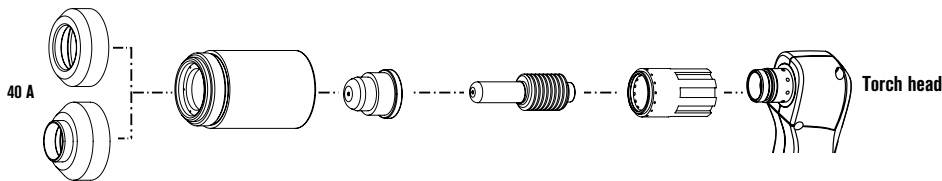


Gouging consumables



	Shield	Retaining cap	Nozzle	Electrode	Swirl ring
60 - 80 A					
60 - 80 A	120977	120928	220059	120926	120925
Package quantity	1	1	5	5	1

FineCut consumables



	Deflector	Retaining cap	Nozzle	Electrode	Swirl ring
40 A	120979	120928	220329	120926	220327
40 A CE**	220325	120928	220329	120926	220327
Package quantity	1	1	5	5	1

TECHNOLOGIES

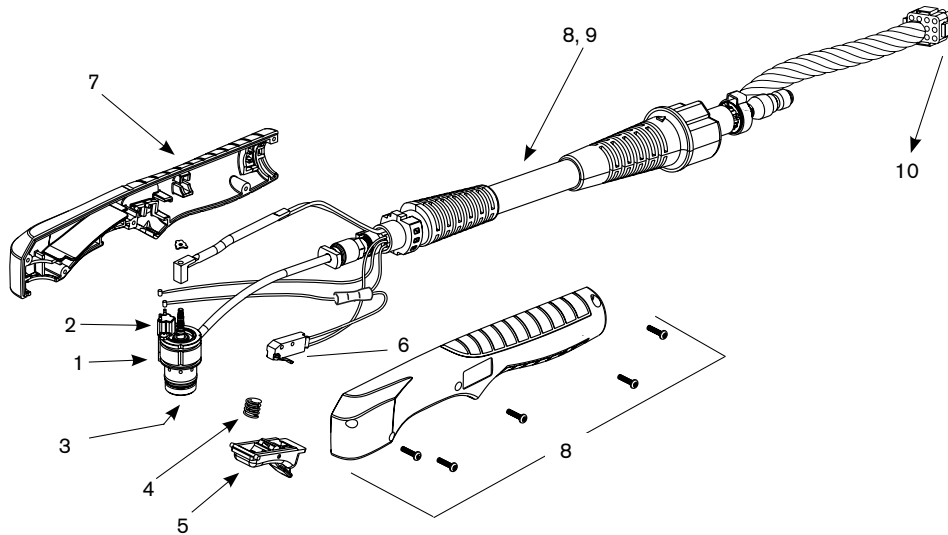
FineCut®
Coaxial-assist™ jet
Vented shield
Spiral groove
HyLife®

* In countries following CE standards, unshielded consumables may only be used in mechanized torch applications. Unshielded consumables: maintain torch-to-work distance of approximately .080" (2 mm).

** CE shield for use in countries requiring CE, CCC, GOST marks.

powermax1250[®]

T80 hand torch assembly



Assembly

Part number	Description
087001*	T80 hand torch assembly with 25' (7.6 m) leads
087002*	T80 hand torch assembly with 50' (15.2 m) leads
087049*	T80 hand torch assembly with 75' (22.9 m) leads
059309*	Test torch with 6' (1.8 m) leads
1. 128564	Kit: T60/T80 torch main body replacement (does not include cap sensor)
2. 128639	Kit: Cap sensor switch replacement
075571	Cap-off sensor screws
3. 128521	Kit: T60/T80, T60M/T80M torch head repair (does not include head)
4. 027254	Trigger spring
5. 002244	Safety trigger assembly
6. 128642	Kit: T60/T80 start switch replacement
7. 128644	Kit: T60/T80 torch handle replacement
8. 128636	Kit: T80 lead replacement, 50' (15.2 m)
9. 128637	Kit: T80 lead replacement, 25' (7.6 m)
10. 128638	Kit: ETR connector repair (regional repair centers only)
123106	Work lead with clamp, 20' (6.1 m)
128718	Work lead with clamp, 50' (15.2 m)

*Assembly includes consumables



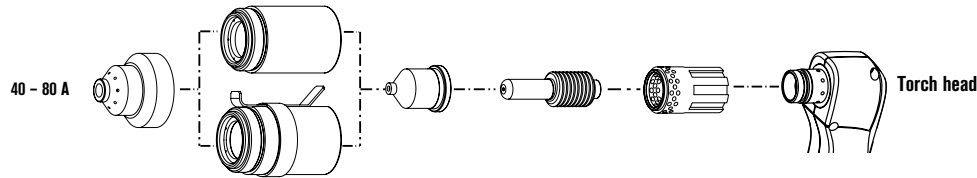
Hypertherm®

powermax1250™ G3 SERIES™

T80M machine torch consumables

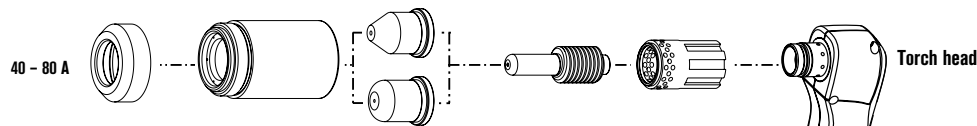


Shielded consumables



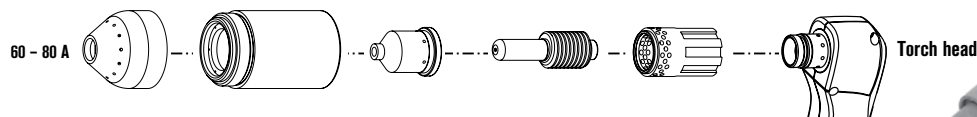
	Shield	Retaining cap	Nozzle	Electrode	Swirl ring
40 A	120930	120928	120932	120926	120925
60 A	120930	120928	120931	120926	120925
80 A	120930	120928	120927	120926	120925
Ohmic		220061			
Package quantity	1	1	5	5	1

Unshielded* consumables



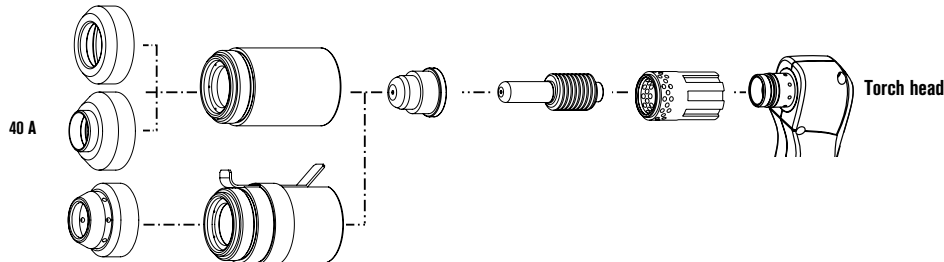
	Deflector	Retaining cap	Nozzle	Electrode	Swirl ring
40 A	120979	120928	220006	120926	120925
60 A	120979	120928	220007	120926	120925
80 A	120979	120928	120980	120926	120925
Package quantity	1	1	5	5	1

Gouging consumables



	Shield	Retaining cap	Nozzle	Electrode	Swirl ring
60 - 80 A	120977	120928	220059	120926	120925
Package quantity	1	1	5	5	1

FineCut consumables



	Shield / Deflector	Retaining cap	Nozzle	Electrode	Swirl ring
40 A	120979	120928	220329	120926	120925
40 A CE	220325	120928	220329	120926	120925
Ohmic		220061			
Package quantity	1	1	5	5	1



TECHNOLOGIES

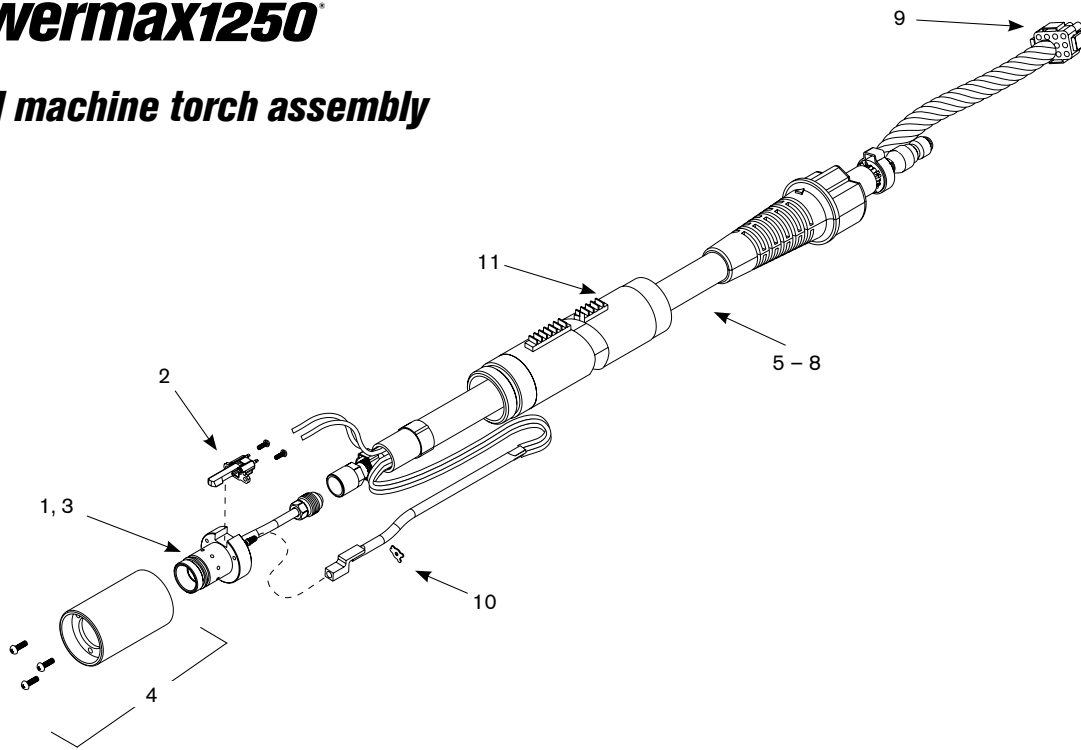
FineCut®
Coaxial-assist™ jet
Vented shield
Spiral groove
HyLife®

* In countries following CE standards, unshielded consumables may only be used in mechanized torch applications. Unshielded consumables: maintain torch-to-work distance of approximately .080" (2 mm).

Hypertherm, Powermax, FineCut, Coaxial-assist and HyLife are trademarks of Hypertherm, Inc. and may be registered in the United States and/or other countries.

powermax1250[®]

T80M machine torch assembly



Assembly

Part number	Description
087003*	T80M machine torch assembly with 15' (4.6 m) leads
087004*	T80M machine torch assembly with 25' (7.6 m) leads
087005*	T80M machine torch assembly with 35' (10.7 m) leads
087006*	T80M machine torch assembly with 50' (15.2 m) leads
087051*	T80M machine torch assembly with 75' (22.9 m) leads
059309*	Test torch with 6' (1.8 m) leads
128645	Kit: Torch mounting
1. 128640	Kit: T60M/T80M torch main body replacement (does not include cap sensor)
2. 128639	Kit: Cap sensor switch replacement
075571	Cap-off sensor screws
3. 128521	Kit: T60/T80, T60M/T80M torch head repair (does not include head)
4. 128643	Kit: T60M/T80M mounting sleeve replacement
5. 128634	Kit: T60M/T80M lead replacement, 15' (4.6 m)
6. 128633	Kit: T60M/T80M lead replacement, 25' (7.6 m)
7. 128635	Kit: T60M/T80M lead replacement, 35' (10.7 m)
8. 128641	Kit: T60M/T80M lead replacement, 50' (15.2 m)
9. 128638	Kit: ETR connector repair (regional repair centers only)
10. 027889	Retaining clip
11. 128710	Kit: T60/T80M positioning sleeve replacement
128650	On/Off pendant for machine torch, 25' (7.6 m)
128651	On/Off pendant for machine torch, 50' (15.2 m)
128652	On/Off pendant for machine torch, 75' (22.9 m)
123106	Work lead with clamp, 20' (6.1 m)
128145	Work lead with clamp, 50' (15.2 m)
128718	Work lead with clamp, 50' (15.2 m)

*Assembly includes consumables



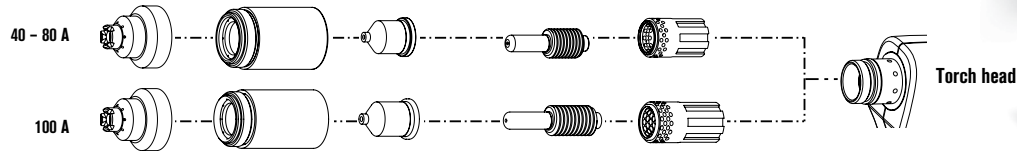
Hypertherm®

powermax1650™ G3 SERIES™

T100 hand torch consumables

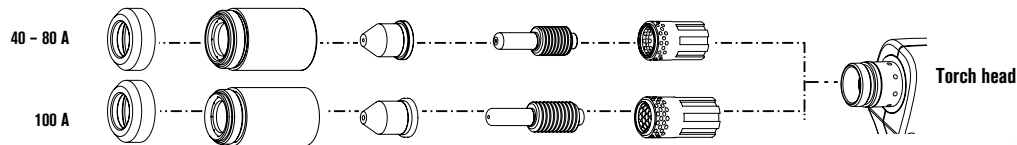


Shielded consumables



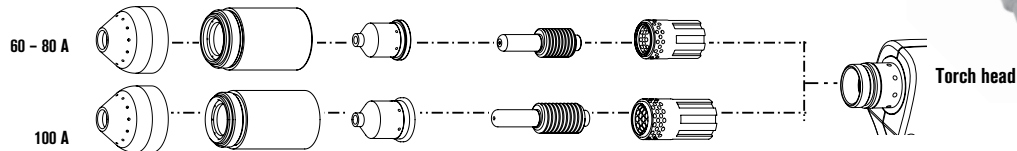
	Shield	Retaining cap	Nozzle	Electrode	Swirl ring
40 A	120929	120928	120932	120926	120925
60 A	120929	120928	120931	120926	120925
80 A	120929	120928	120927	120926	120925
100 A	220065	220048	220011	220037	220051
Package quantity	1	1	5	5	1

Unshielded* consumables



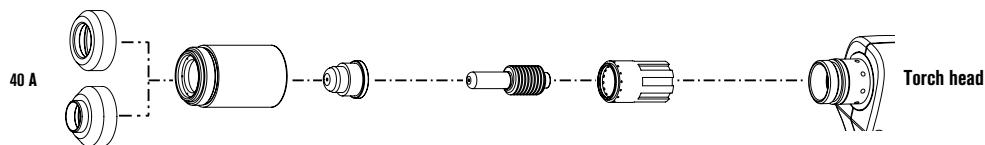
	Deflector	Retaining cap	Nozzle	Electrode	Swirl ring
40 A	120979	120928	220006	120926	120925
60 A	120979	120928	220007	120926	120925
80 A	120979	120928	120980	120926	120925
100 A	120979	220048	220064	220037	220051
Package quantity	1	1	5	5	1

Gouging consumables



	Shield	Retaining cap	Nozzle	Electrode	Swirl ring
60 - 80 A	120977	120928	220059	120926	120925
100 A	120977	220048	220063	220037	220051
Package quantity	1	1	5	5	1

FineCut consumables



	Deflector	Retaining cap	Nozzle	Electrode	Swirl ring
40 A	120979	120928	220329	120926	220327
40 A CE**	220325	120928	220329	120926	220327
Package quantity	1	1	5	5	1

TECHNOLOGIES

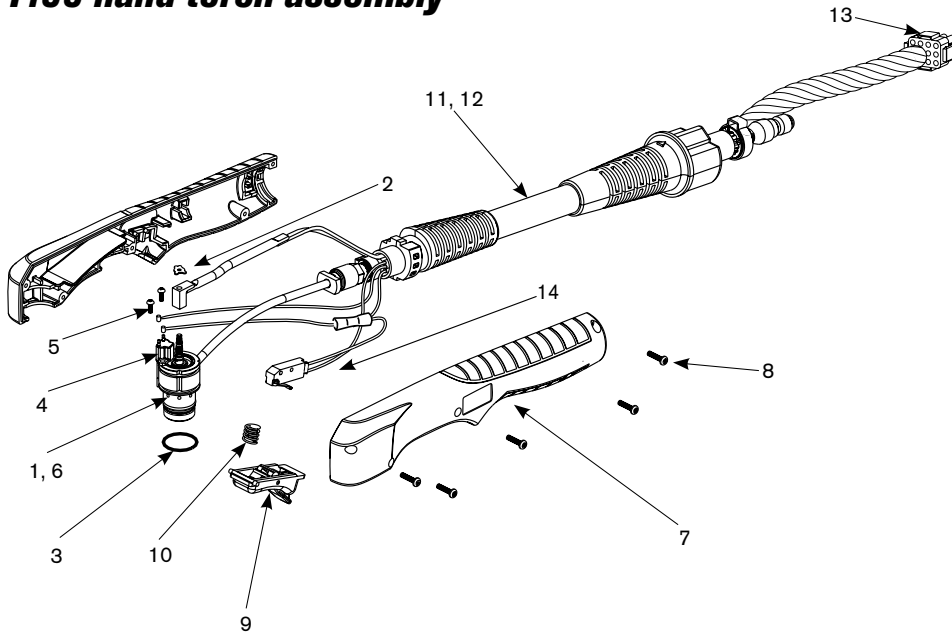
FineCut®
Coaxial-assist™ jet
Vented shield
Spiral groove
HyLife®

* In countries following CE standards, unshielded consumables may only be used in mechanized torch applications. Unshielded consumables: maintain torch-to-work distance of approximately .080" (2 mm).

** CE shield for use in countries requiring CE, CCC, GOST marks.

powermax1650[®]

T100 hand torch assembly



Assembly

Part number	Description
059264*	T100 hand torch assembly with 25' (7.6 m) leads
059270*	T100 hand torch assembly with 50' (15.2 m) leads
059301*	T100 hand torch assembly with 75' (22.9 m) leads
059309*	Test torch with 6' (1.8 m) leads
1. 128767	Kit: T100 torch main body replacement (does not include cap sensor)
2. 027889	Retaining clip
3. 058519	O-ring
4. 128639	Kit: Cap-off sensor replacement
5. 075571	Cap-off sensor screws
6. 128768	Kit: T100/T100M torch head repair (does not include head)
7. 128644	Kit: T100 torch handle replacement
8. 075586	Handle screws
9. 002244	Safety trigger
10. 027254	Trigger spring
11. 128755	Kit: T100 lead replacement, 25' (7.6 m)
12. 128752	Kit: T100 lead replacement, 50' (15.2 m)
13. 128638	Kit: ETR connector repair (regional repair centers only)
14. 128642	Kit: Start switch replacement
123654	Work lead with clamp, 20' (6.1 m)
123655	Work lead with clamp, 50' (15.2 m)

*Assembly includes consumables

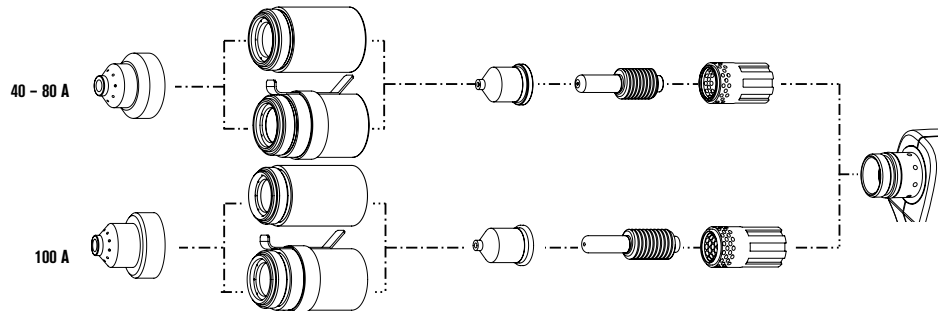


Hypertherm®

powermax1650™ G3 SERIES™

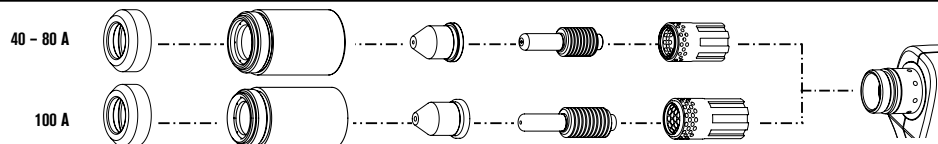
T100M machine torch consumables

Shielded consumables



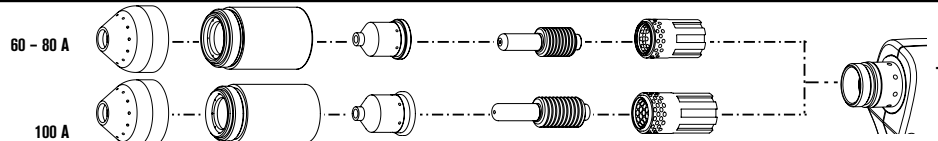
	Shield	Retaining cap	Nozzle	Electrode	Swirl ring
40 - 80 A	120930	120928	120932	120926	120925
60 A	120930	120928	120931	120926	120925
80 A	120930	120928	120927	120926	120925
100 A	220047	220048	220011	220037	220051
40 - 80 A Ohmic		220061			
100 A Ohmic		220206			
Package quantity	1	1	5	5	1

Unshielded* consumables



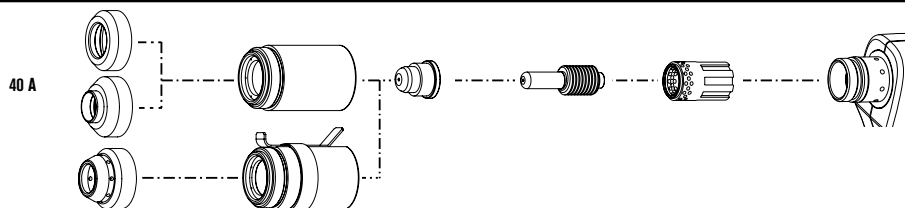
	Deflector	Retaining cap	Nozzle	Electrode	Swirl ring
40 - 80 A	120979	120928	220006	120926	120925
60 A	120979	120928	220007	120926	120925
80 A	120979	120928	120980	120926	120925
100 A	120979	220048	220064	220037	220051
Package quantity	1	1	5	5	1

Gouging consumables



	Shield	Retaining cap	Nozzle	Electrode	Swirl ring
60 - 80 A	120977	120928	220059	120926	120925
100 A	120977	220048	220063	220037	220051
Package quantity	1	1	5	5	1

FineCut consumables



	Shield / Deflector	Retaining cap	Nozzle	Electrode	Swirl ring
40 A	120979	120928	220329	120926	120925
40 A CE	220325	120928	220329	120926	120925
Ohmic	220404	220061			
Package quantity	1	1	5	5	1



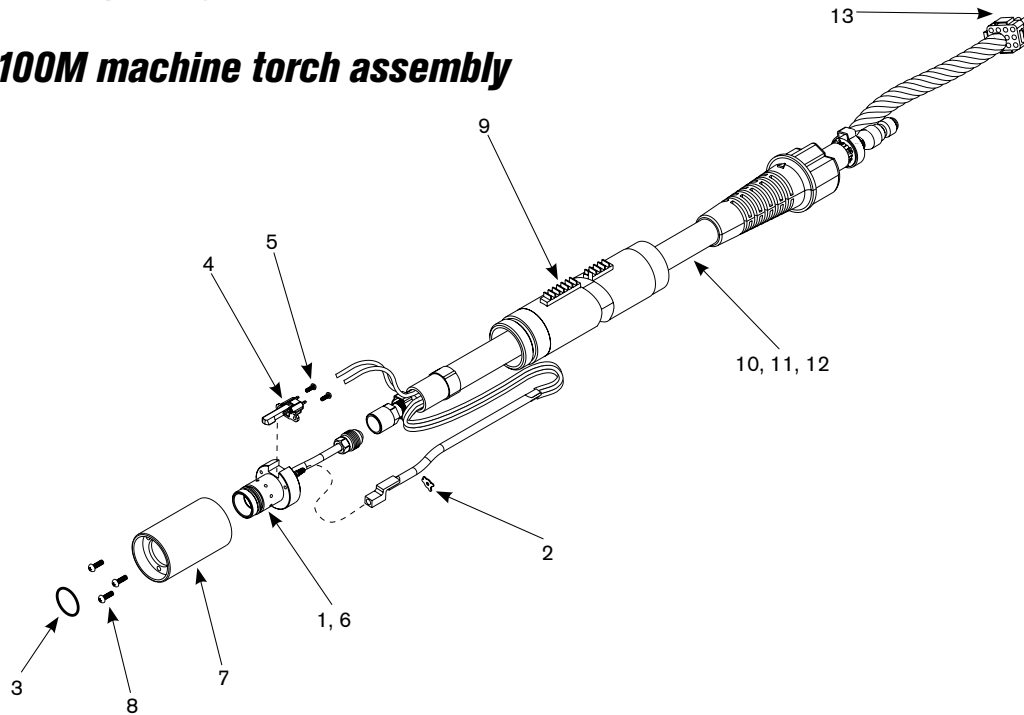
TECHNOLOGIES

FineCut®
Coaxial-assist™ jet
Vented shield
Spiral groove
HyLife®

* In countries following CE standards, unshielded consumables may only be used in mechanized torch applications. Unshielded consumables: maintain torch-to-work distance of approximately .080" (2 mm).

Hypertherm, Powermax, FineCut, Coaxial-assist and HyLife are trademarks of Hypertherm, Inc. and may be registered in the United States and/or other countries.

T100M machine torch assembly



Assembly

Part number	Description
059265*	T100M machine torch assembly with 25' (7.6 m) leads
059268*	T100M machine torch assembly with 35' (10.7 m) leads
059272*	T100M machine torch assembly with 50' (15.2 m) leads
059303*	T100M machine torch assembly with 75' (22.9 m) leads
059309*	Test torch with 6' (1.8 m) leads
1. 128754	Kit: T100M torch main body replacement (does not include cap sensor)
2. 027889	Retaining clip
3. 058519	O-ring
4. 128639	Kit: Cap sensor switch replacement
5. 075571	Cap-off sensor screws
6. 128768	Kit: T100/T100M torch head repair (does not include head)
7. 128643	Kit: T100M mounting sleeve replacement
8. 075004	Torch mounting screws
9. 128710	Torch positioning sleeve
10. 128753	Kit: T100/T100M lead replacement, 25' (7.6 m)
11. 128751	Kit: T100/T100M lead replacement, 35' (10.7 m)
12. 128759	Kit: T100/T100M lead replacement, 50' (15.2 m)
13. 128638	Kit: ETR connector repair (regional repair centers only)
128645	Kit: Torch mounting (for reassembly after installation)
128650	On/Off pendant for machine torch, 25' (7.6 m)
128651	On/Off pendant for machine torch, 50' (15.2 m)
128652	On/Off pendant for machine torch, 75' (22.9 m)
123654	Work lead with clamp, 20' (6.1 m)
123655	Work lead with clamp, 50' (15.2 m)

*Assembly includes consumables

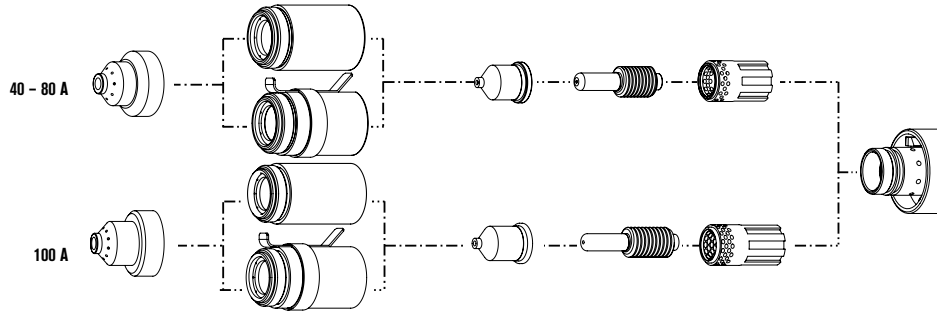


Hypertherm®

powermax1650™ G3 SERIES™

T100M-2 machine torch consumables

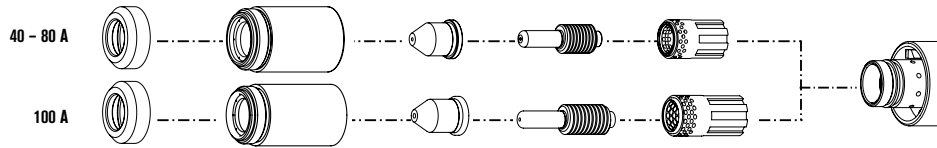
Shielded consumables



	Shield	Retaining cap	Nozzle	Electrode	Swirl ring
40 - 80 A	120930	120928	120932	120926	120925
60 A	120930	120928	120931	120926	120925
80 A	120930	120928	120927	120926	120925
100 A	220047	220048	220011	220037	220051
40 - 80 A Ohmic		220061			
100 A Ohmic		220206			
Package quantity	1	1	5	5	1

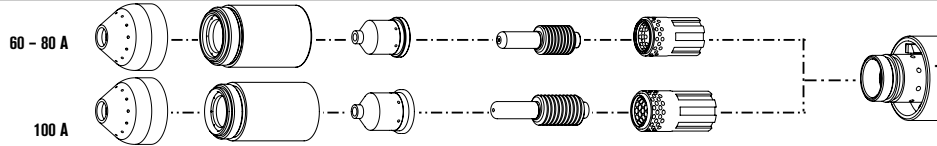


Unshielded* consumables



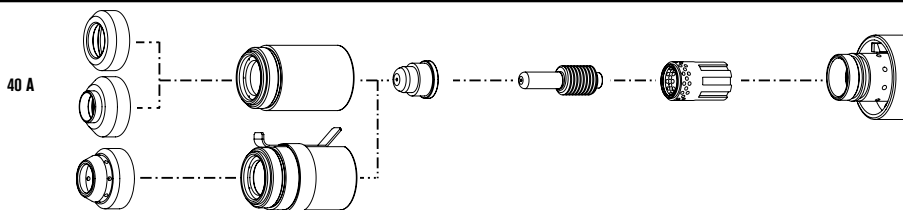
	Deflector	Retaining cap	Nozzle	Electrode	Swirl ring
40 - 80 A	120979	120928	220006	120926	120925
60 A	120979	120928	220007	120926	120925
80 A	120979	120928	120980	120926	120925
100 A	120979	220048	220064	220037	220051
Package quantity	1	1	5	5	1

Gouging consumables



	Shield	Retaining cap	Nozzle	Electrode	Swirl ring
60 - 80 A	120977	120928	220059	120926	120925
100 A	120977	220048	220063	220037	220051
Package quantity	1	1	5	5	1

FineCut consumables



	Shield / Deflector	Retaining cap	Nozzle	Electrode	Swirl ring
40 A	120979	120928	220329	120926	120925
40 A CE	220325	120928	220329	120926	120925
Ohmic	220404	220061			
Package quantity	1	1	5	5	1



TECHNOLOGIES

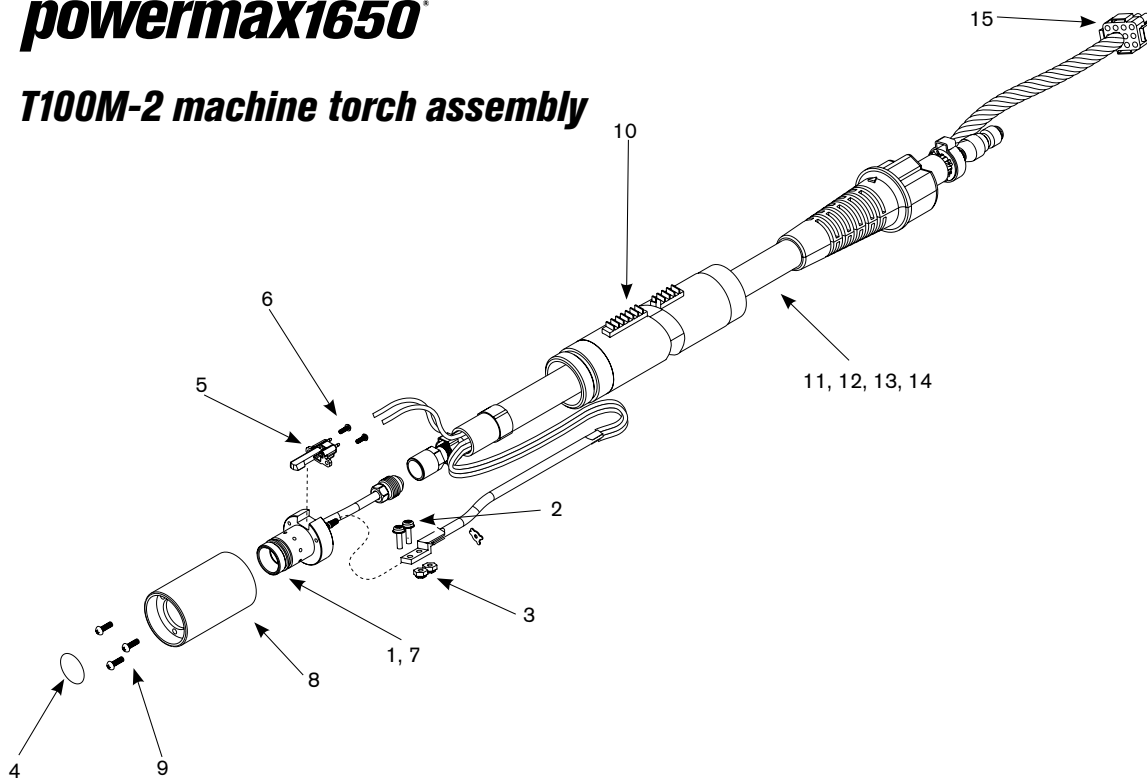
FineCut®
Coaxial-assist™ jet
Vented shield
Spiral groove
HyLife®

* In countries following CE standards, unshielded consumables may only be used in mechanized torch applications. Unshielded consumables: maintain torch-to-work distance of approximately .080" (2 mm).

Hypertherm, Powermax and PAC are trademarks of Hypertherm, Inc. and may be registered in the United States and/or other countries.

powermax1650[®]

T100M-2 machine torch assembly



Assembly

Part number	Description
059315*	T100M-2 machine torch assembly with 25' (7.6 m) leads
059324*	T100M-2 machine torch assembly with 35' (10.7 m) leads
059325*	T100M-2 machine torch assembly with 50' (15.2 m) leads
059326*	T100M-2 machine torch assembly with 75' (22.9 m) leads
1. 228523	Kit: T100M-2 torch main body replacement (does not include cap sensor)
2. 075473	Machine screws
3. 075503	Lock nuts
4. 058519	O-ring
5. 128639	Kit: Cap-off sensor replacement
6. 075571	Cap-off sensor screws
7. 228522	Kit: T100M-2 torch head repair
8. 128643	Kit: Torch mounting sleeve replacement
9. 075004	Torch mounting screws
10. 128710	Torch positioning sleeve
11. 228222	Kit: T100M-2 lead replacement, 25' (7.6 m)
12. 228223	Kit: T100M-2 lead replacement, 35' (10.7 m)
13. 228224	Kit: T100M-2 lead replacement, 50' (15.2 m)
14. 228225	Kit: T100M-2 lead replacement, 75' (22.9 m)
15. 128638	Kit: ETR connector repair (regional repair centers only)
128645	Kit: Torch mounting (for reassembly after installation)

*Assembly includes consumables



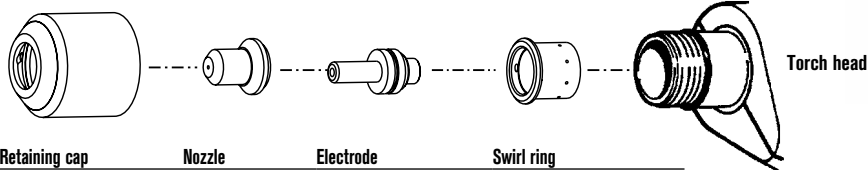
Hypertherm®

powermax350

PAC110 hand torch consumables



Extended* consumables



	Retaining cap	Nozzle	Electrode	Swirl ring
Package quantity	1	5	5	1

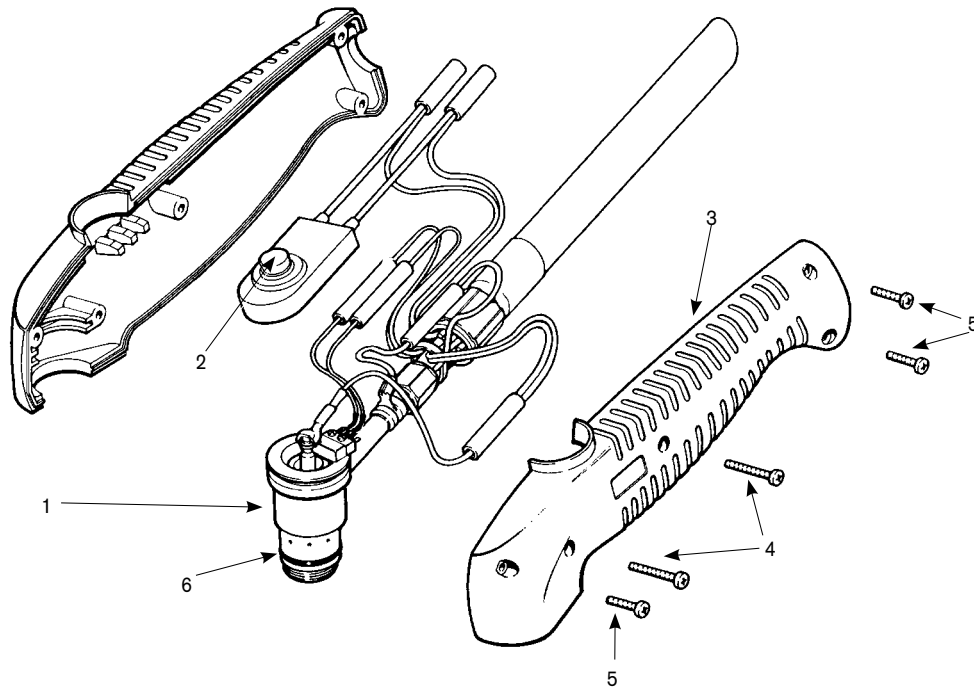


* In countries following CE standards, unshielded consumables may only be used in mechanized torch applications. Unshielded consumables: maintain torch-to-work distance of approximately .080" (2 mm).

Hypertherm, Powermax and PAC are trademarks of Hypertherm, Inc. and may be registered in the United States and/or other countries.

powermax350

PAC110 hand torch assembly



Assembly

Part number	Description
070057*	PAC110 hand torch assembly with 15' (4.6 m) leads
070058*	PAC110 hand torch assembly with 25' (7.6 m) leads
070779*	PAC110T hand torch replacement with 20' (6.1 m) leads
1. 020588	Torch main body with switch
2. 005094	Switch, torch pushbutton
3. 001192	Handle (includes both halves)
4. 075341	Screw, #4 x 3/4" (two required)
5. 075339	Screw, #4 x 1/2" (three required)
6. 044016	O-ring, Buna - N 90 Duro
029241	Torch leads, 15' (4.6 m)
029257	Torch leads, 25' (7.6 m)
060169	Work lead with clamp, 15' (4.6 m)

*Assembly includes consumables



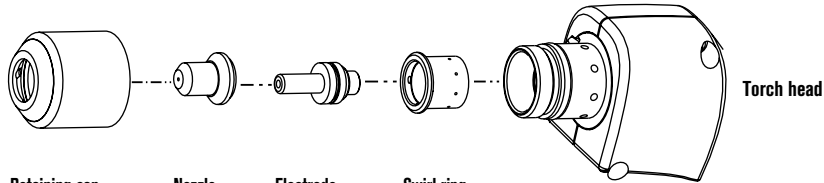
Hypertherm®

powermax380

PAC110T hand torch consumables



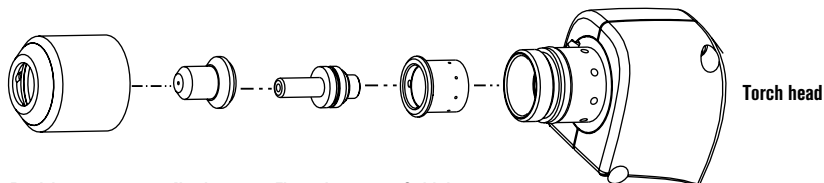
Extended* consumables



	Retaining cap	Nozzle	Electrode	Swirl ring
Package quantity	1	5	5	1



FineCut consumables



	Retaining cap	Nozzle	Electrode	Swirl ring
Package quantity	1	5	5	1

TECHNOLOGIES

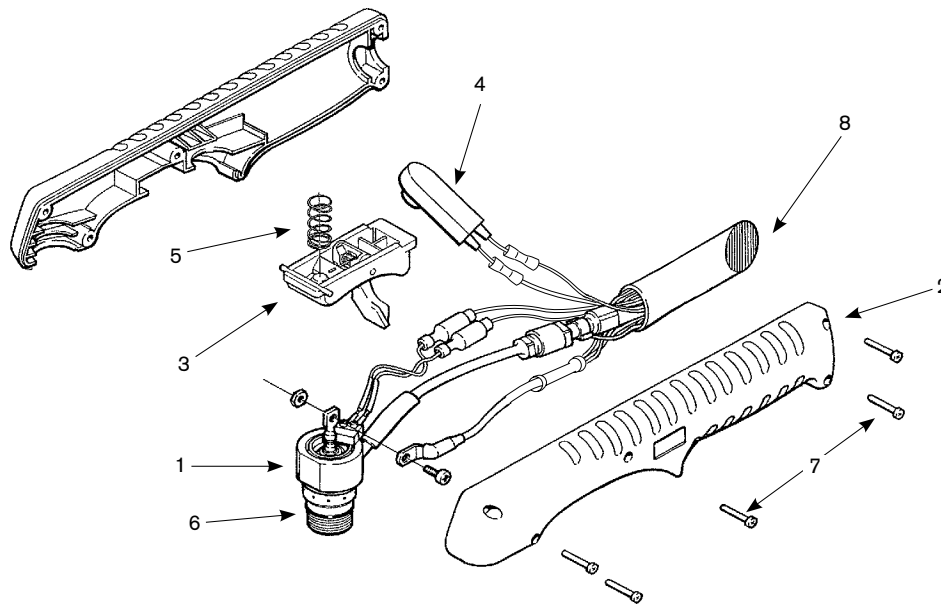
FineCut®

* In countries following CE standards, unshielded consumables may only be used in mechanized torch applications. Unshielded consumables: maintain torch-to-work distance of approximately .080" (2 mm).

Hypertherm, Powermax, PAC and FineCut are trademarks of Hypertherm, Inc. and may be registered in the United States and/or other countries.

powermax380

PAC110T hand torch assembly



Assembly

	Part number	Description
	070071*	PAC110T hand torch assembly with 20' (6.1 m) leads
1.	120976	Torch main body with switch
2.	001288	Handle (includes both halves)
3.	002244	Safety trigger assembly
4.	005202	Switch, torch pushbutton
5.	027254	Trigger spring
6.	058503	O-ring, Viton .625 x .070
7.	075339	Screws #4 x 1/2", (five required)
8.	060208	Torch lead replacement, 20' (6.1 m)
	060169	Work lead with clamp, 15' (4.6 m)

*Assembly includes consumables



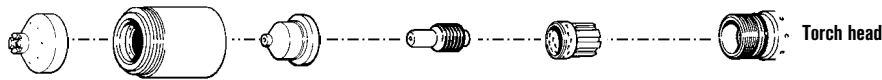
Hypertherm®

powermax600

PAC123T hand torch consumables

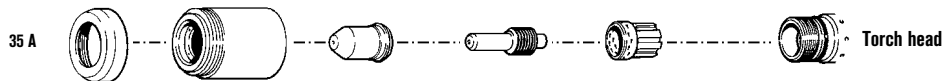


Shielded consumables



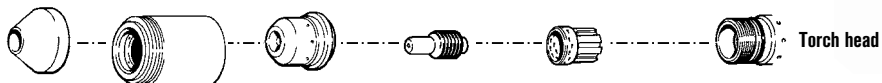
	Shield	Retaining cap	Nozzle	Electrode	Swirl ring
Package quantity	1	1	5	5	1

Unshielded* consumables



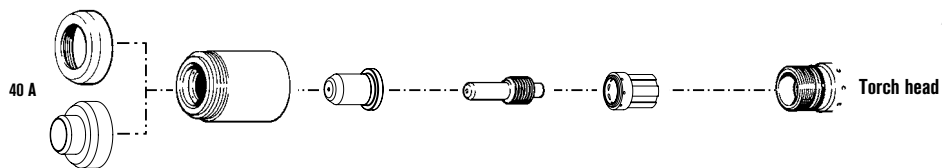
	Deflector	Retaining cap	Nozzle	Electrode	Swirl ring
Package quantity	1	1	5	5	1

Gouging consumables



	Shield	Retaining cap	Nozzle	Electrode	Swirl ring
Package quantity	1	1	5	5	1

FineCut consumables



	Deflector	Retaining cap	Nozzle	Electrode	Swirl ring
Package quantity	1	1	5	5	1

Note:
The nozzles and swirl rings shown must be used as a set.

* In countries following CE standards, unshielded consumables may only be used in mechanized torch applications. Unshielded consumables: maintain torch-to-work distance of approximately .080" (2 mm).
** CE shield for use in countries requiring CE, CCC, GOST marks.

Hypertherm, Powermax, PAC, FineCut, coaxial-assist and HyLife are trademarks of Hypertherm, Inc. and may be registered in the United States and/or other countries.



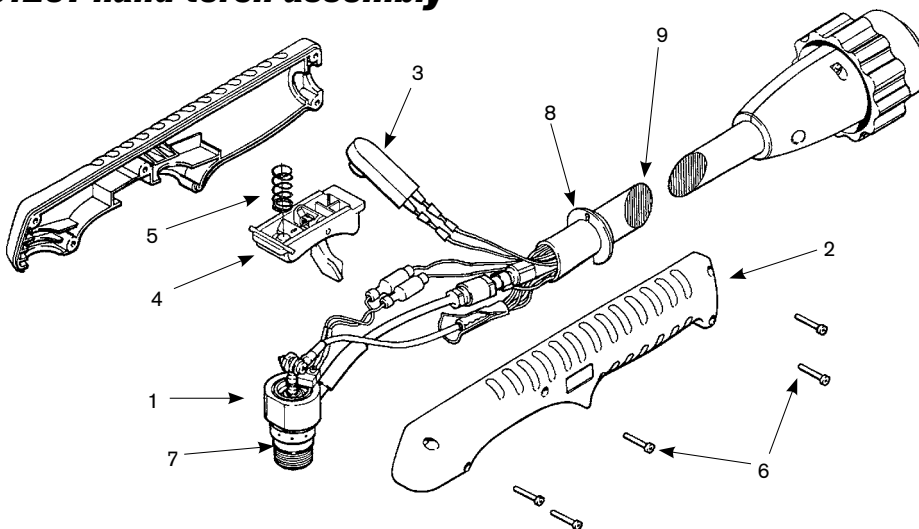
For improved performance, retrofit with the RT60 torch (see page 67).

TECHNOLOGIES

- FineCut®**
- Coaxial-assist™ jet**
- Vented shield**
- Spiral groove**
- HyLife®**

powermax600

PAC123T hand torch assembly



Assembly – torch with quick disconnects only for use with 208-240V and 480V systems

Part number	Description
086023*	PAC123T hand torch assembly with QD 15' (4.6 m) leads
086024*	PAC123T hand torch assembly with QD 25' (7.6 m) leads
086025*	PAC123T hand torch assembly with QD 50' (15.2 m) leads
083219*	Test torch with 6' (1.8 m) leads
9. 129599	Torch leads with QD, 15' (4.6 m)
9. 129600	Torch leads with QD, 25' (7.6 m)
9. 129601	Torch leads with QD, 50' (15.2 m)
123375	Work lead with clamp, 15' (4.6 m)
128379	Work lead with clamp, 50' (15.2 m)

Assembly – torch without quick disconnects only for use with 230V and 400V systems

Part number	Description
086001*	PAC123T hand torch assembly, without QD 15' (4.6 m) leads
086002*	PAC123T hand torch assembly, without QD 25' (7.6 m) leads
086003*	PAC123T hand torch assembly, without QD 50' (15.2 m) leads
083219*	Test torch with 6' (1.8 m) leads
9. 129475	Torch leads, without QD, 15' (4.6 m)
9. 129476	Torch leads, without QD, 25' (7.6 m)
9. 129477	Torch leads, without QD, 50' (15.2 m)
1. 120570	Torch main body with switch
2. 001288	Handle (includes both halves)
3. 128377	Kit: Switch repair
4. 002244	Safety trigger assembly
5. 027254	Trigger spring
6. 075339	Screw, #4 x 1/2" (five required)
7. 044016	O-ring, Buna – N 90 Duro
8. 004764	Retaining ring, Gutcha
123375	Work lead with clamp, 15' (4.6 m)
128379	Work lead with clamp, 50' (15.2 m)

* Assembly includes consumables



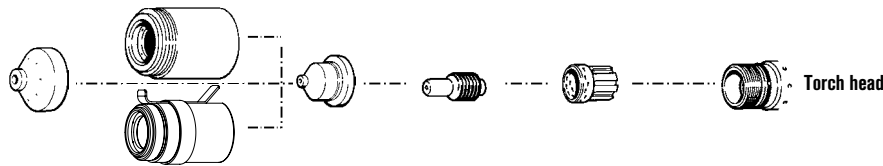
Hypertherm®

powermax600

PAC123M machine torch consumables

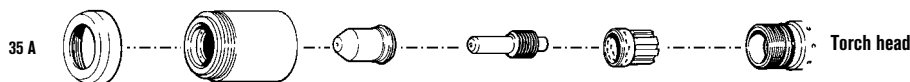


Shielded consumables



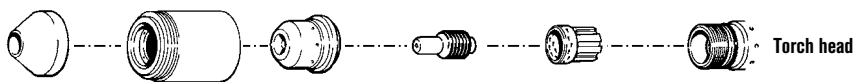
	Shield	Retaining cap	Nozzle	Electrode	Swirl ring
	120827	120600	120826	120573	120576
Ohmic		120964			
Package quantity	1	1	5	5	1

Unshielded* consumables



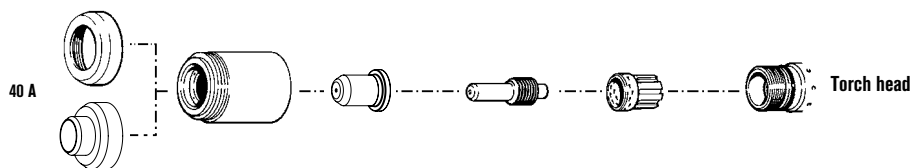
	Deflector	Retaining cap	Nozzle	Electrode	Swirl ring
35 A	120303	120600	120606	120574	120576
Package quantity	1	1	5	5	1

Gouging consumables



	Shield	Retaining cap	Nozzle	Electrode	Swirl ring
	120608	120600	120831	120573	120576
Package quantity	1	1	5	5	1

FineCut consumables



	Deflector	Retaining cap	Nozzle	Electrode	Swirl ring
40 A	120303	120600	220330	120574	120576
40 A CE	220326	120600	220330	120574	120576
Package quantity	1	1	5	5	1

Note:

The nozzles and swirl rings shown must be used as a set.

* In countries following CE standards, unshielded consumables may only be used in mechanized torch applications. Unshielded consumables: maintain torch-to-work distance of approximately .080" (2 mm).

Hypertherm, Powermax, PAC, FineCut, coaxial-assist and HyLife are trademarks of Hypertherm, Inc. and may be registered in the United States and/or other countries.



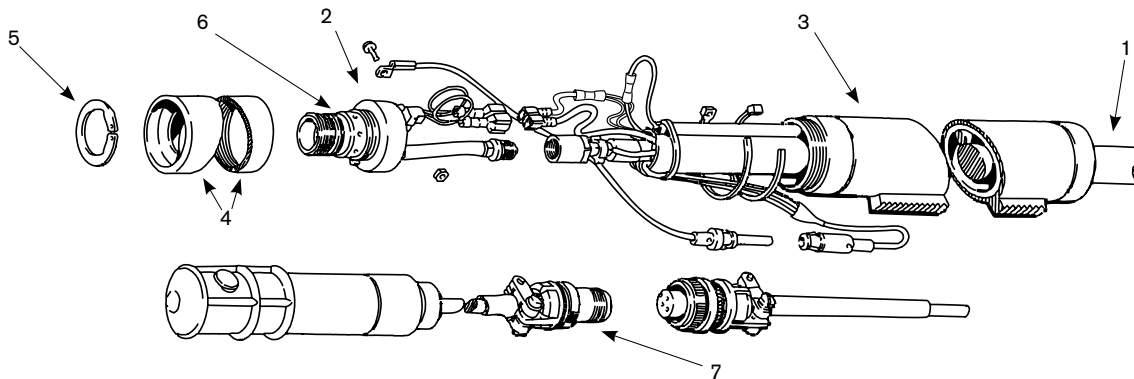
For improved performance, retrofit with the RT60M torch (see page 69).

TECHNOLOGIES

FineCut®
Coaxial-assist™ jet
Vented shield
Spiral groove
HyLife®

powermax600

PAC123M torch assembly



Assembly – torch with quick disconnects only for use with 208-240V and 480V systems

Part number	Description
086026*	PAC123M machine torch assembly with QD 15' (4.6 m) leads (with pigtail)
086027*	PAC123M machine torch assembly with QD 25' (7.6 m) leads (with pigtail)
086029*	PAC123M machine torch assembly with QD 50' (15.2 m) leads (with pigtail)
083219*	Test torch with 6' (1.8 m) leads
1. 128572	Torch leads with QD, 15' (4.6 m) (with pigtail)
1. 128573	Torch leads with QD, 25' (7.6 m) (with pigtail)
1. 128574	Torch leads with QD, 50' (15.2 m) (with pigtail)
123375	Work lead with clamp, 15' (4.6 m)
128379	Work lead with clamp, 50' (15.2 m)

Assembly – torch without quick disconnects only for use with 230V and 400V systems

Part number	Description
086004*	PAC123M machine torch assembly, without QD 15' (4.6 m) leads (with pigtail)
086005*	PAC123M machine torch assembly, without QD 25' (7.6 m) leads (with pigtail)
086006*	PAC123M machine torch assembly, without QD 50' (15.2 m) leads (with pigtail)
083219*	Test torch with 6' (1.8 m) leads
1. 128374	Torch leads, without QD, 15' (4.6 m) (with pigtail)
1. 128375	Torch leads, without QD, 25' (7.6 m) (with pigtail)
1. 128376	Torch leads, without QD, 50' (15.2 m) (with pigtail)
2. 120583	Torch main body with switch
3. 020620	Torch position sleeve
4. 120613	Torch sleeve
5. 027599	Snap ring
6. 044016	O-ring, Buna – N 90 Duro
7. 028714	On/Off pendant, 25' (7.6 m)
7. 128061	On/Off pendant, 50' (15.2 m)
7. 128062	On/Off pendant, 75' (22.9 m)
029257	Torch leads, 25' (7.6 m)
128379	Work lead with clamp, 50' (15.2 m)

* Assembly includes consumables

For improved performance, retrofit with the RT60M torch (see page 69).

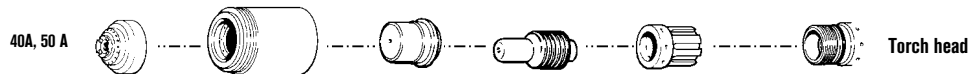


Hypertherm®

powermax800

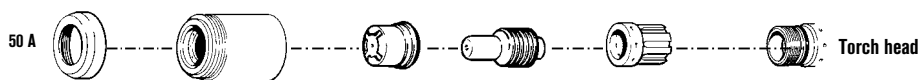
PAC121TS/125T hand torch consumables

Shielded consumables



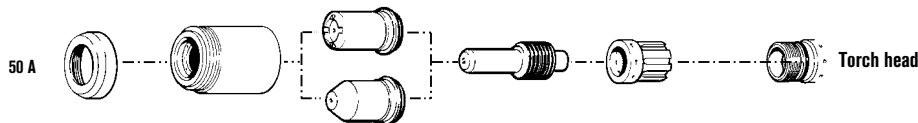
	Shield	Retaining cap	Nozzle	Electrode	Swirl ring
40 A	120601	120600	120438	120573	020361
50 A	120601	120600	120282	120573	020361
Package quantity	1	1	5	5	1

Unshielded* consumables



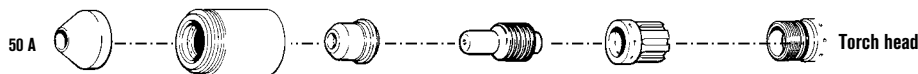
	Deflector	Retaining cap	Nozzle	Electrode	Swirl ring
50 A	120303	120600	020395	120573	020361
Package quantity	1	1	5	5	1

Extended consumables



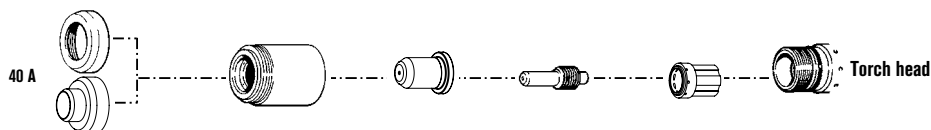
	Deflector	Retaining cap	Nozzle	Electrode	Swirl ring
50 A	120303	120600	120304	120574	020361
Pipe saddle	120303	120600	120305	120574	020361
Package quantity	1	1	5	5	1

Gouging consumables



	Shield	Retaining cap	Nozzle	Electrode	Swirl ring
50 A	120608	120600	120281	120573	020361
Package quantity	1	1	5	5	1

FineCut consumables



	Deflector	Retaining cap	Nozzle	Electrode	Swirl ring
40 A	120303	120600	220330	120574	220332
40 A CE**	220326	120600	220330	120574	220332
Package quantity	1	1	5	5	1

Notes:

The nozzles and swirl rings shown must be used as a set.

A label located on the torch handle indicates whether the torch is a PAC121TS or PAC125T.

* In countries following CE standards, unshielded consumables may only be used in mechanized torch applications. Unshielded consumables: maintain torch-to-work distance of approximately .080" (2 mm).

** CE shield for use in countries requiring CE, CCC, GOST marks.

Hypertherm, Powermax, PAC and FineCut are trademarks of Hypertherm, Inc. and may be registered in the United States and/or other countries.



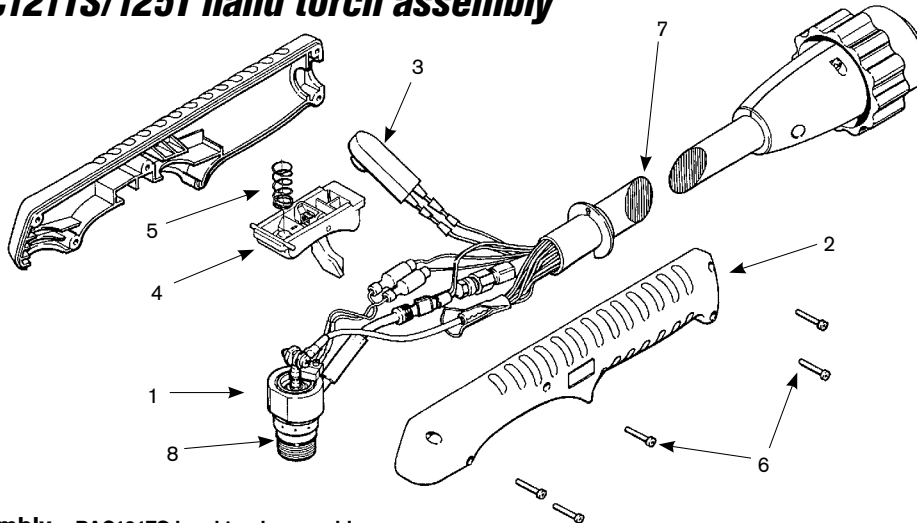
For improved performance, retrofit with the RT60 torch (see page 67).

TECHNOLOGIES

FineCut®
Spiral groove
Vented shield

powermax800

PAC121TS/125T hand torch assembly



Assembly – PAC121TS hand torch assembly

Part number	Description
083130*	PAC125T/Powermax800 hand torch assembly with 25' (7.6 m) leads
083131*	PAC125T/Powermax800 hand torch assembly with 50' (15.2 m) leads
083219*	Test torch with 6' (1.8 m) leads
1. 120556	Torch main body with switch
2. 001288	Handle (includes both halves)
3. 128284	Switch, torch pushbutton
4. 002244	Safety trigger assembly
5. 027254	Trigger spring
6. 075340	Screw, #4 x 5/8" (five required)
7. 129001	PAC121TS torch leads, 25' (7.6 m)
7. 129002	PAC121TS torch leads, 50' (15.2 m)
8. 044016	O-ring, Buna – N 90 Duro
023922	Work lead with clamp, 20' (6.1 m)
028907	Work lead with clamp, 50' (15.2 m)

Assembly – PAC125T hand torch assembly

Part number	Description
083130*	PAC125T/Powermax800 hand torch assembly with 25' (7.6 m) leads
083131*	PAC125T/Powermax800 hand torch assembly with 50' (15.2 m) leads
083219*	Test torch with 6' (1.8 m) leads
1. 120570	Torch main body with switch
2. 001288	Handle (includes both halves)
3. 128284	Switch, torch pushbutton
4. 002244	Safety trigger assembly
5. 027254	Trigger spring
6. 075340	Screw, #4 x 5/8" (five required)
7. 129352	PAC125T torch leads, 25' (7.6 m)
7. 129353	PAC125T torch leads, 50' (15.2 m)
8. 044016	O-ring, Buna – N 90 Duro
023922	Work lead with clamp, 20' (6.1 m)
028907	Work lead with clamp, 50' (15.2 m)

*Assembly includes consumables

Note:

A label located on the torch handle indicates whether the torch is a PAC121TS or PAC125T.

Hypertherm, Powermax, PAC and FineCut are trademarks of Hypertherm, Inc. and may be registered in the United States and/or other countries.

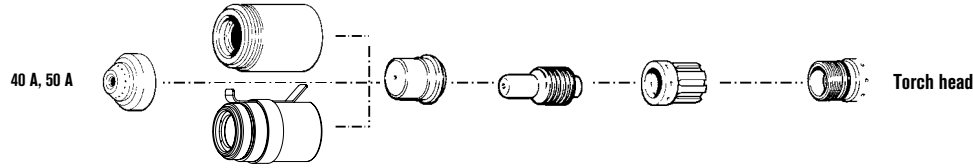


Hypertherm®

powermax800

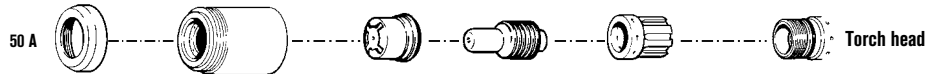
PAC121M/125M machine torch consumables

Shielded consumables



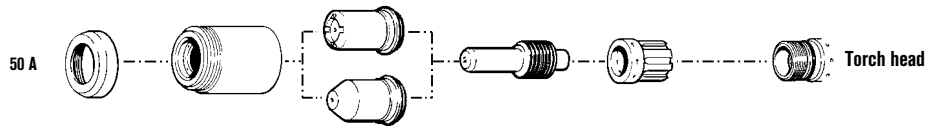
	Shield	Retaining cap	Nozzle	Electrode	Swirl ring
40 A	120602	120600	120438	120573	020361
50 A	120602	120600	120282	120573	020361
Ohmic		120964			
Package quantity	1	1	5	5	1

Unshielded* consumables



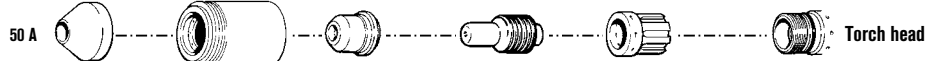
	Deflector	Retaining cap	Nozzle	Electrode	Swirl ring
50 A	120303	120600	020395	120573	020361
Package quantity	1	1	5	5	1

Extended consumables



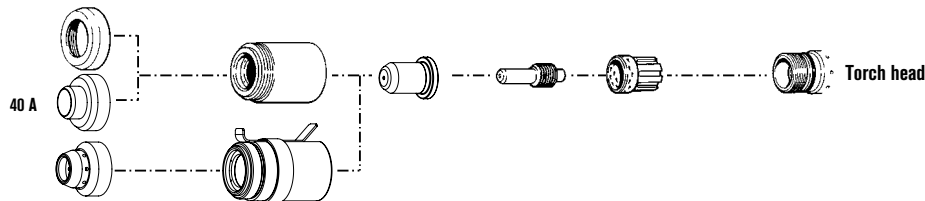
	Deflector	Retaining cap	Nozzle	Electrode	Swirl ring
50 A	120303	120600	120304	120574	020361
Pipe saddle	120303	120600	120305	120574	020361
Package quantity	1	1	5	5	1

Gouging consumables



	Shield	Retaining cap	Nozzle	Electrode	Swirl ring
50 A	120608	120600	120281	120573	020361
Package quantity	1	1	5	5	1

FineCut consumables



	Shield / Deflector	Retaining cap	Nozzle	Electrode	Swirl ring
40 A	120303	120600	220330	120574	120576
40 A CE	220326	120600	220330	120574	120576
Ohmic	220403	120964			
Package quantity	1	1	5	5	1

Notes:

The nozzles and swirl rings shown must be used as a set.

A label located on the torch handle indicates whether the torch is a PAC121TS or PAC125T.

* In countries following CE standards, unshielded consumables may only be used in mechanized torch applications. Unshielded consumables: maintain torch-to-work distance of approximately .080" (2 mm).

Hypertherm, Powermax, PAC and FineCut are trademarks of Hypertherm, Inc. and may be registered in the United States and/or other countries.

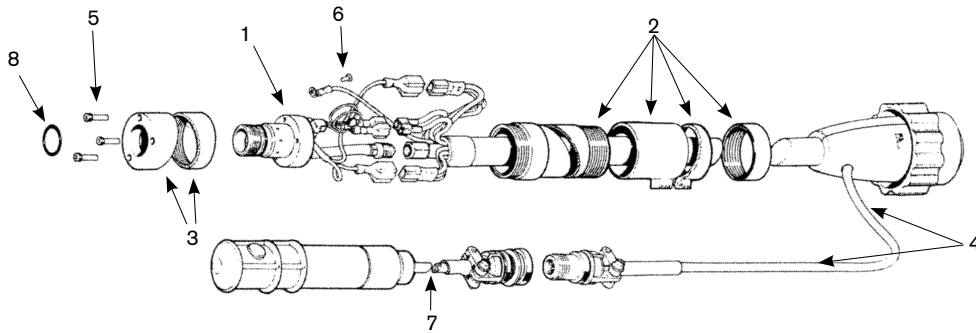


For improved performance, retrofit with the RT60M torch (see page 69).

TECHNOLOGIES

FineCut®
Spiral groove
Vented shield

PAC121M/PAC125M machine torch assembly



Assembly – PAC121M machine torch assembly

Part number	Description
083219*	Test torch with 6' (1.8 m) leads
1. 120558	Torch main body with switch
2. 020620	Torch position sleeve
3. 020559	Torch sleeve
4. 028923	Torch lead with pigtail, 14' (4.3 m)
4. 028918	Torch lead with pigtail, 25' (7.6 m)
4. 028926	Torch lead with pigtail, 35' (10.7 m)
4. 028919	Torch lead with pigtail, 50' (15.2 m)
5. 075321	Screw, 4-40 x 1/2, Hex, SS (three required)
6. 075322	Screw, 4-40 x 1/4, SL, SZ
7. 028461	On/Off pendant, 25' (7.6 m)
7. 028462	On/Off pendant, 50' (15.2 m)
7. 028463	On/Off pendant, 75' (22.9 m)
8. 044016	O-ring: Buna 90 Duro .614 x .070
4. 128123	Torch lead, 14' (4.3 m) (without pigtail)
4. 128125	Torch lead, 25' (7.6 m) (without pigtail)
4. 128126	Torch lead, 35' (10.7 m) (without pigtail)
4. 128127	Torch lead, 50' (15.2 m) (without pigtail)
023922	Work lead with clamp, 20' (6.1 m)
028907	Work lead with clamp, 50' (15.2 m)

Assembly – PAC125M machine torch assembly

Part number	Description
083136*	PAC125M torch assembly with pigtail with 14' (4.3 m) leads
083137*	PAC125M torch assembly with pigtail with 25' (7.6 m) leads
083138*	PAC125M torch assembly with pigtail with 35' (10.7 m) leads
083139*	PAC125M torch assembly with pigtail with 50' (15.2 m) leads
083140*	PAC125M torch assembly without pigtail with 14' (4.3 m) leads
083141*	PAC125M torch assembly without pigtail with 25' (7.6 m) leads
083142*	PAC125M torch assembly without pigtail with 35' (10.7 m) leads
083143*	PAC125M torch assembly without pigtail with 50' (15.2 m) leads
083219*	Test torch with 6' (1.8 m) leads
1. 120583	Torch main body with switch
2. 020620	Torch position sleeve
3. 120613	Torch sleeve
4. 129339	Torch lead with pigtail, 15' (4.6 m)
4. 129338	Torch lead with pigtail, 25' (7.6 m)
4. 129340	Torch lead with pigtail, 35' (10.7 m)
4. 129341	Torch lead with pigtail, 50' (15.2 m)
4. 129343	Torch lead without pigtail, 14' (4.3 m)
4. 129342	Torch lead without pigtail, 25' (7.6 m)
4. 129344	Torch lead without pigtail, 35' (10.7 m)
4. 129345	Torch lead without pigtail, 50' (15.2 m)
5. 075321	Screw, 4-40 x 1/2, Hex, SS (three required)
6. 075322	Screw, 4-40 x 1/4, SL, SZ
7. 028714	On/Off pendant, 25' (7.6 m)
7. 128061	On/Off pendant, 50' (15.2 m)
7. 128062	On/Off pendant, 75' (22.9 m)
8. 044016	O-ring: Buna 90 Duro .614 x .070
023922	Work lead with clamp, 20' (6.1 m)
028907	Work lead with clamp, 50' (15.2 m)

*Assembly includes consumables



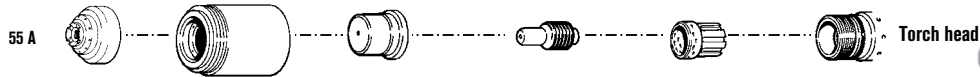
Hypertherm®

powermax900

PAC125T hand torch consumables

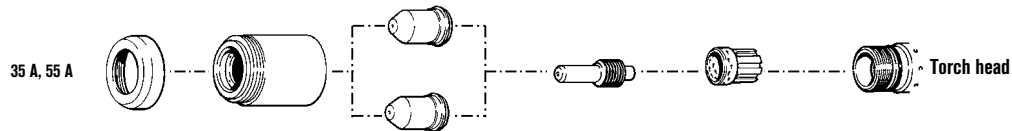


Shielded consumables



	Shield	Retaining cap	Nozzle	Electrode	Swirl ring
55 A	120601	120600	120577	120573	120576
Package quantity	1	1	5	5	1

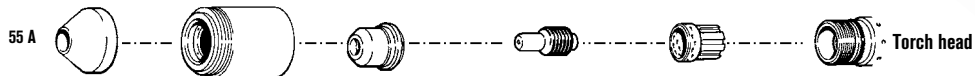
Unshielded* consumables



	Deflector	Retaining cap	Nozzle	Electrode	Swirl ring
35 A Pipe saddle	120303	120600	120606	120574	120576
55 A Pipe saddle	120303	120600	120578	120574	120576
Package quantity	1	1	5	5	1



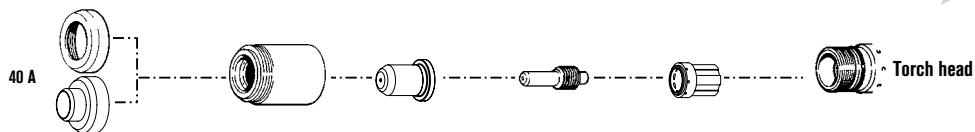
Gouging consumables



	Shield	Retaining cap	Nozzle	Electrode	Swirl ring
55 A	120608	120600	120607	120573	120576
Package quantity	1	1	5	5	1

For improved performance, retrofit with the RT60 torch (see page 67).

FineCut consumables



	Deflector	Retaining cap	Nozzle	Electrode	Swirl ring
40 A	120303	120600	220330	120574	220332
40 A CE**	220326	120600	220330	120574	220332
Package quantity	1	1	5	5	1

Note:

The nozzles and swirl rings shown must be used as a set.

* In countries following CE standards, unshielded consumables may only be used in mechanized torch applications. Unshielded consumables: maintain torch-to-work distance of approximately .080" (2 mm).

** CE shield for use in countries requiring CE, CCC, GOST marks.

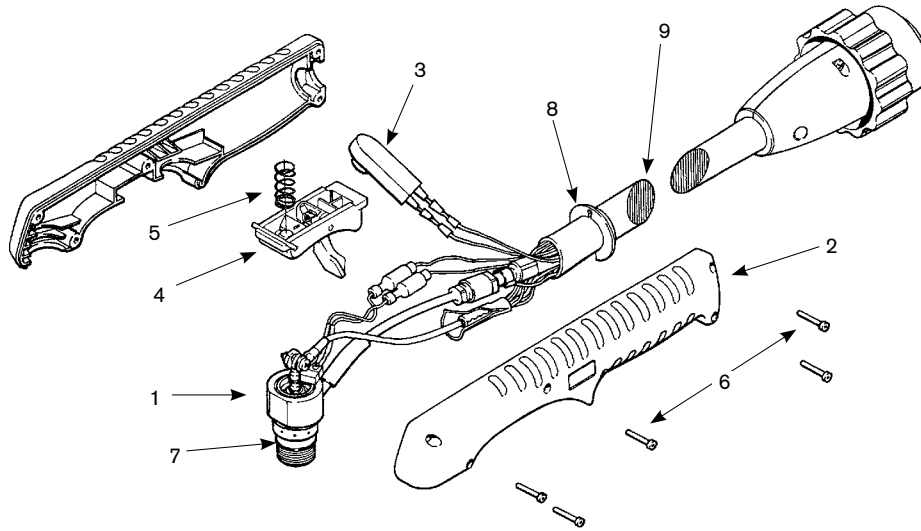
Hypertherm, Powermax, PAC and FineCut are trademarks of Hypertherm, Inc. and may be registered in the United States and/or other countries.

TECHNOLOGIES

FineCut®
Spiral groove
Vented shield
HyLife®

powermax900

PAC125T hand torch assembly



Assembly

Part number	Description
083066*	PAC125T hand torch assembly with 25' (7.6 m) leads
083067*	PAC125T hand torch assembly with 50' (15.2 m) leads
083219*	Test torch with 6' (1.8 m) leads
1. 120570	Torch main body with switch
2. 001288	Handle (includes both halves)
3. 128284	Kit: Switch repair
4. 002244	Safety trigger assembly
5. 027254	Trigger spring
6. 075339	Screw, #4 x 1/2" (five required)
7. 044016	O-ring, Buna – N 90 Duro
8. 004764	Ring, Gutcha
9. 129352	PAC125T torch leads, 25' (7.6 m)
9. 129353	PAC125T torch leads, 50' (15.2 m)
023922	Work lead with clamp, 20' (6.1 m)
028907	Work lead with clamp, 50' (15.2 m)

*Assembly includes consumables



**For improved
performance, retrofit
with the RT60 torch
(see page 67).**

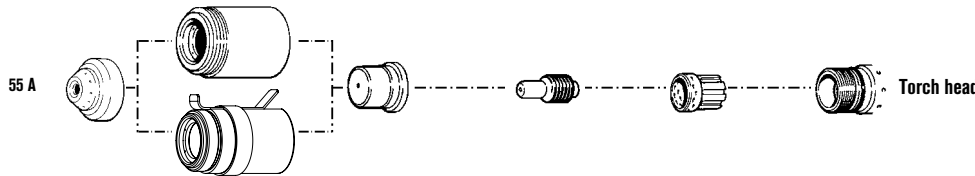
Hypertherm®

powermax900

PAC125M machine torch consumables

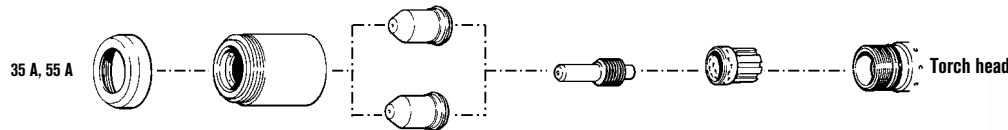


Shielded consumables



	Shield	Retaining cap	Nozzle	Electrode	Swirl ring
55 A	120602	120600	120577	120573	120576
Ohmic		120964			
Package quantity	1	1	5	5	1

Unshielded* consumables



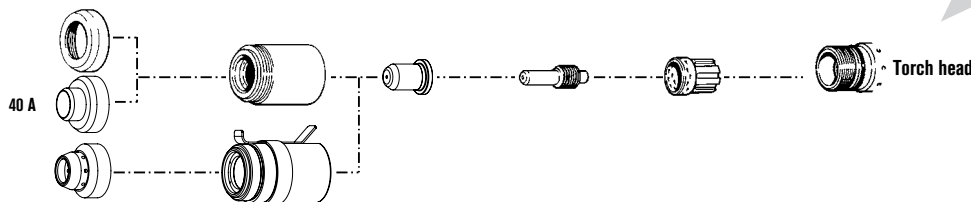
	Deflector	Retaining cap	Nozzle	Electrode	Swirl ring
35 A Pipe saddle	120303	120600	120606	120574	120576
55 A Pipe saddle	120303	120600	120578	120574	120576
Package quantity	1	1	5	5	1

Gouging consumables



	Shield	Retaining cap	Nozzle	Electrode	Swirl ring
55 A	120608	120600	120607	120573	120576
Package quantity	1	1	5	5	1

FineCut consumables



	Shield / Deflector	Retaining cap	Nozzle	Electrode	Swirl ring
40 A	120303	120600	220330	120574	120576
40 A CE	220326	120600	220330	120574	120576
Ohmic	220403	120964			
Package quantity	1	1	5	5	1

Note:

The nozzles and swirl rings shown must be used as a set.

* In countries following CE standards, unshielded consumables may only be used in mechanized torch applications. Unshielded consumables: maintain torch-to-work distance of approximately .080" (2 mm).

Hypertherm, Powermax, PAC and FineCut are trademarks of Hypertherm, Inc. and may be registered in the United States and/or other countries.



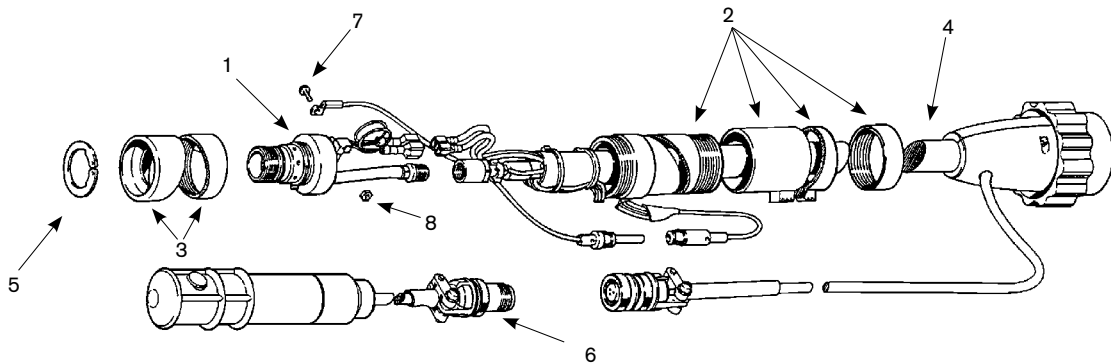
For improved performance, retrofit with the RT60M torch (see page 69).

TECHNOLOGIES

FineCut®
Spiral groove
Vented shield
HyLife®

powermax900

PAC125M machine torch assembly



Assembly

Part number	Description
083069*	PAC125M torch assembly with pigtail with 14' (4.3 m) leads
083068*	PAC125M torch assembly with pigtail with 25' (7.6 m) leads
083070*	PAC125M torch assembly with pigtail with 35' (10.7 m) leads
083071*	PAC125M torch assembly with pigtail with 50' (15.2 m) leads
083073*	PAC125M torch assembly without pigtail with 14' (4.3 m)
083072*	PAC125M torch assembly without pigtail with 25' (7.6 m)
083074*	PAC125M torch assembly without pigtail with 35' (10.7 m)
083075*	PAC125M torch assembly without pigtail with 50' (15.2 m)
083219*	Test torch with 6' (1.8 m) leads
1. 120583	Torch main body with switch
2. 020620	Torch position sleeve
3. 120613	Torch sleeve
4. 129339	Torch lead with pigtail, 14' (4.3 m)
4. 129338	Torch lead with pigtail, 25' (7.6 m)
4. 129340	Torch lead with pigtail, 35' (10.7 m)
4. 129341	Torch lead with pigtail, 50' (15.2 m)
5. 027599	Snap ring
6. 028714	On/Off pendant, 25' (7.6 m)
6. 128061	On/Off pendant, 50' (15.2 m)
6. 128062	On/Off pendant, 75' (22.9 m)
7. 075504	Screw, 4-40 x 5/16"
8. 075503	Locknut, 4-40
4. 129343	Torch lead without pigtail, 14' (4.3 m)
4. 129342	Torch lead without pigtail, 25' (7.6 m)
4. 129344	Torch lead without pigtail, 35' (10.7 m)
4. 129345	Torch lead without pigtail, 50' (15.2 m)
023922	Work lead with clamp, 20' (6.1 m)
028907	Work lead with clamp, 50' (15.2 m)

*Assembly includes consumables



For improved performance, retrofit with the RT60Mtorch (see page 69).

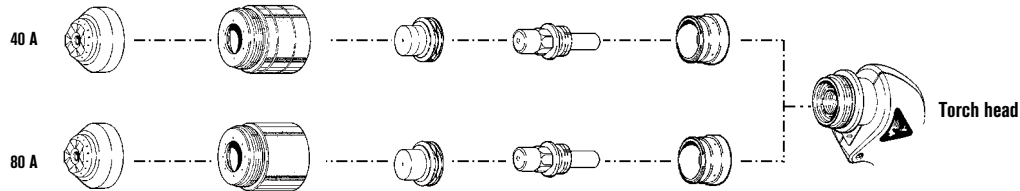
Hypertherm®

powermax1100

PAC135T hand torch consumables

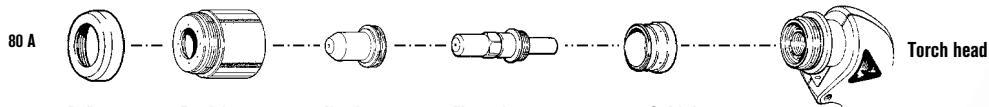


Shielded consumables



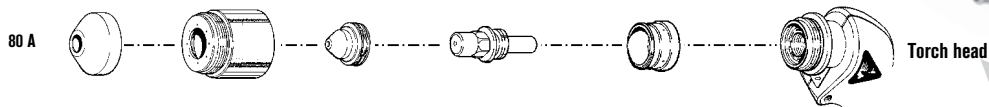
	Shield	Retaining cap	Nozzle	Electrode	Swirl ring
40 A	120475	120520	120515	120473	120474
80 A	120475	120483	120476	120473	120474
Package quantity	1	1	5	5	1

Extended* consumables



	Deflector	Retaining cap	Nozzle	Electrode	Swirl ring
80 A	120519	120483	120518	120517	120474
Package quantity	1	1	5	5	1

Gouging consumables



	Shield	Retaining cap	Nozzle	Electrode	Swirl ring
80 A	120510	120483	120509	120473	120474
Package quantity	1	1	5	5	1



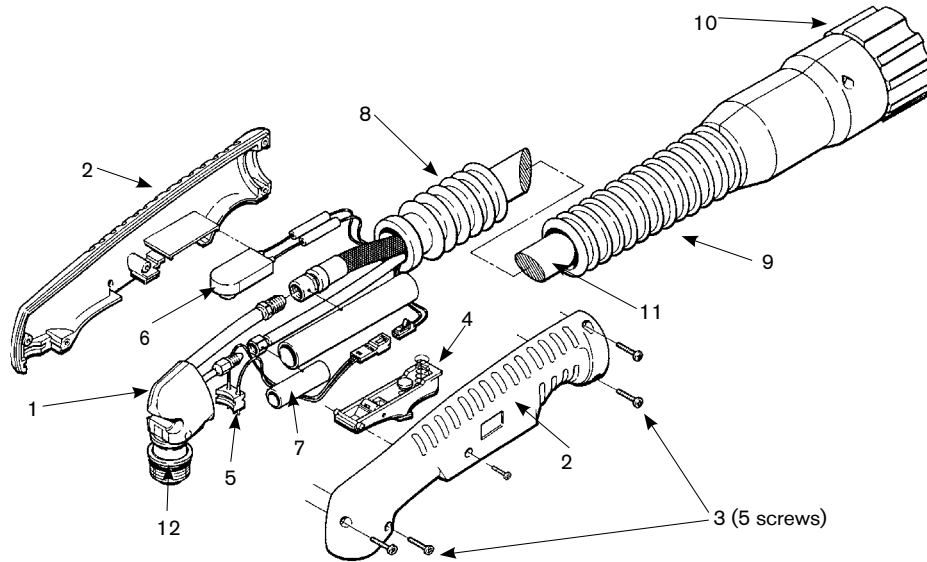
For improved performance, retrofit with the RT80 torch (see page 71).

TECHNOLOGIES
Vented shield
HyLife®

* In countries following CE standards, unshielded consumables may only be used in mechanized torch applications. Unshielded consumables: maintain torch-to-work distance of approximately .080" (2 mm).

powermax1100

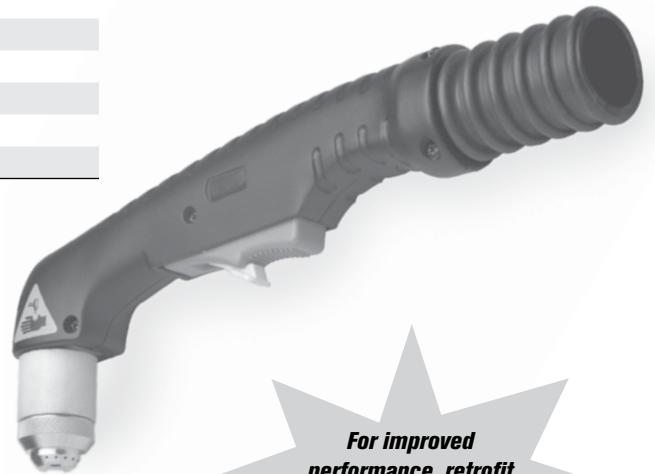
PAC135T hand torch assembly



Assembly

Part number	Description
085001*	PAC135T torch assembly, quick disconnect with 25' (7.6 m) leads
085061*	PAC135T torch assembly, quick disconnect with 50' (15.2 m) leads
1. 120477	Torch main body
2. 001615	Handle (includes both halves)
3. 075497	Screws, #6 x 5/8", phillips head, pan head (five required)
4. 128409	Safety trigger upgrade assembly
5. 005212	Switch assembly, cap-on sensor
6. 005247	Push button switch
7. 046072	Heatshrink: 1/2" ID
8. 001616	Torch boot
9. 002277	Quick disconnect boot
10. 128122	Plug assembly: Torch quick disconnect
11. 129559	Torch lead, 25' (7.6 m)
11. 129560	Torch lead, 50' (15.2 m)
12. 026020	O-ring, silicon
128145	Work lead with clamp, 50' (15.2 m)

*Assembly includes consumables



For improved performance, retrofit with the RT80 torch (see page 71).

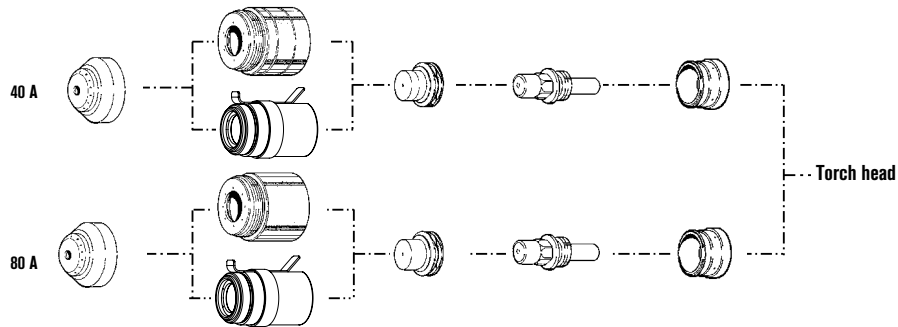
Hypertherm®

powermax1100

PAC135M machine torch consumables

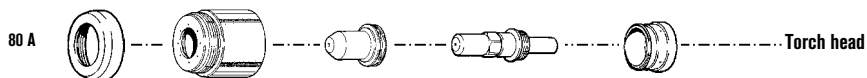


Shielded consumables



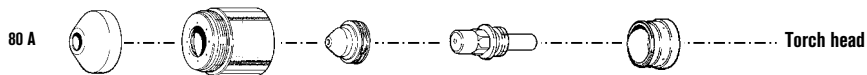
	Shield	Retaining cap	Nozzle	Electrode	Swirl ring
40 A	120516	120520	120515	120473	120474
80 A	120516	120483	120476	120473	120474
Ohmic		120968			
Package quantity	1	1	5	5	1

Extended* consumables

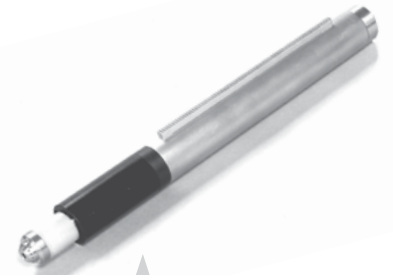


	Deflector	Retaining cap	Nozzle	Electrode	Swirl ring
80 A	120519	120483	120518	120517	120474
Package quantity	1	1	5	5	1

Gouging consumables



	Shield	Retaining cap	Nozzle	Electrode	Swirl ring
80 A	120510	120483	120509	120473	120474
Package quantity	1	1	5	5	1



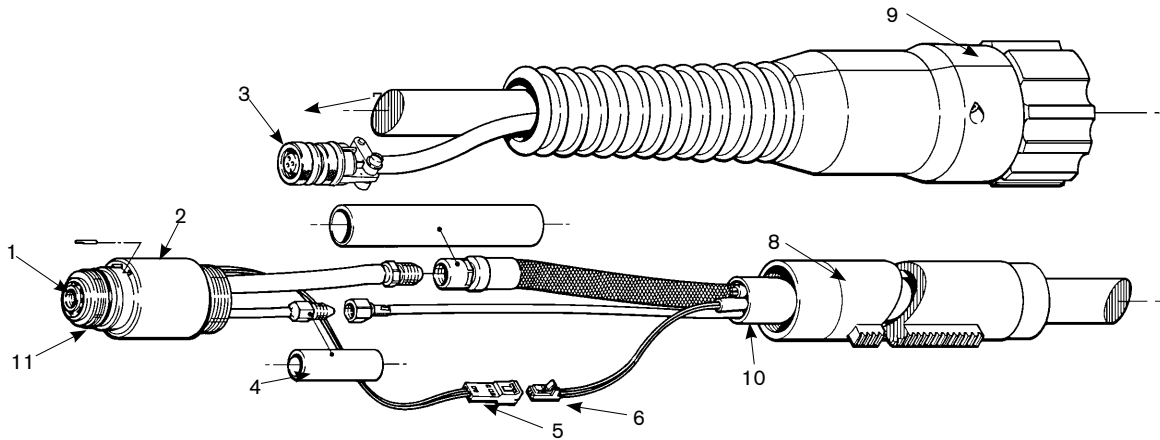
For improved performance, retrofit with the RT80M torch (see page 73).

TECHNOLOGIES
Vented shield
HyLife®

* In countries following CE standards, unshielded consumables may only be used in mechanized torch applications. Unshielded consumables: maintain torch-to-work distance of approximately .080" (2 mm).

powermax1100

PAC135M machine torch assembly



Assembly

Part number	Description
085062*	PAC135M torch assembly with 14' (4.3 m) leads
085063*	PAC135M torch assembly with 25' (7.6 m) leads
085064*	PAC135M torch assembly with 35' (10.7 m) leads
085065*	PAC135M torch assembly with 50' (15.2 m) leads
1. 108040	Contact: Cap-on sensor switch
2. 120508	Torch main body
3. 008268	Plug: 3-socket female
4. 046072	Heatshrink: 1/2" ID
5. 108035	Pin housing: 2-position 26-22 AWG
6. 108034	Receptacle housing: 2-position 26-22 AWG
7. 046056	Tubing: 5/8" ID
8. 020243	Sleeve, torch position
9. 128122	Plug assembly: Torch quick disconnect
10. 129240	Torch lead, 14' (4.3 m)
10. 129241	Torch lead, 25' (7.6 m)
10. 129242	Torch lead, 35' (10.7 m)
10. 129243	Torch lead, 50' (15.2 m)
11. 026020	O-ring, silicon
028714	On/Off pendant, 25' (7.6 m)
128061	On/Off pendant, 50' (15.2 m)
128062	On/Off pendant, 75' (22.9 m)
128145	Work lead with clamp, 50' (15.2 m)

*Assembly includes consumables



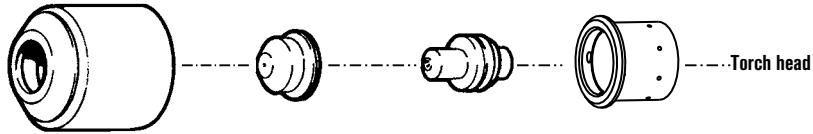
For improved performance, retrofit with the RT80M torch [see page 73].

Hypertherm[®] MAX20

PAC110 hand torch consumables

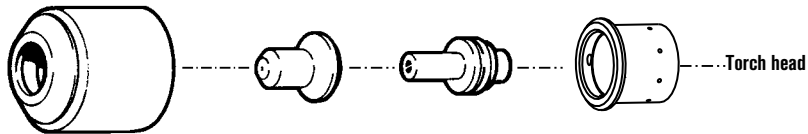


Standard consumables



	Retaining cap	Nozzle	Electrode	Swirl ring
Package quantity	1	5	5	1

Extended* consumables



	Retaining cap	Nozzle	Electrode	Swirl ring
Package quantity	1	5	5	1

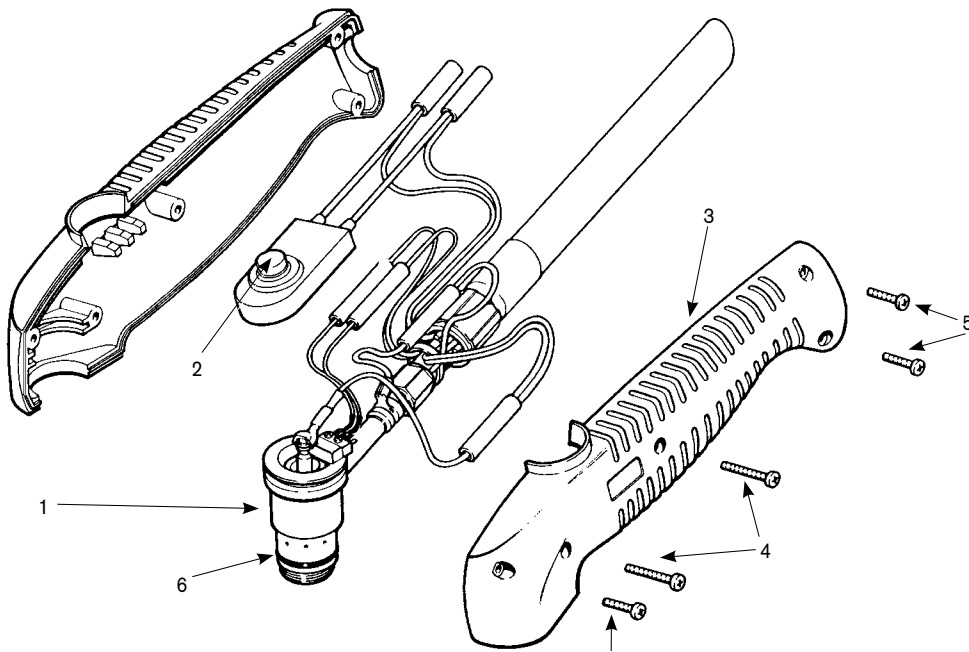


* In countries following CE standards, unshielded consumables may only be used in mechanized torch applications. Unshielded consumables: maintain torch-to-work distance of approximately .080" (2 mm).

Hypertherm, MAX and PAC are trademarks of Hypertherm, Inc. and may be registered in the United States and/or other countries.

MAX20

PAC110 hand torch assembly



Assembly

Part number	Description
070003*	PAC110 torch assembly with 15' (4.6 m) leads
070014*	PAC110 torch assembly with 25' (7.6 m) leads
1. 020588	Torch main body with switch
2. 005094	Switch, torch pushbutton
3. 001192	Handle (includes both halves)
4. 075341	Screw, #4 x 3/4" (two required)
5. 075339	Screw, #4 x 1/2" (three required)
6. 044016	O-ring, Buna – N 90 Duro
029241	Torch leads, 15' (4.6 m)
029257	Torch leads, 25' (7.6 m)
023269	Work lead with clamp, 15' (4.6 m)

*Assembly includes consumables

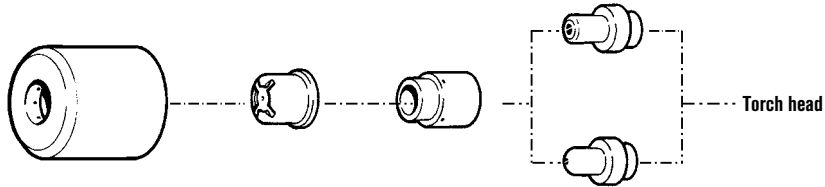


Hypertherm®

MAX40/HT40

PAC140 hand torch consumables

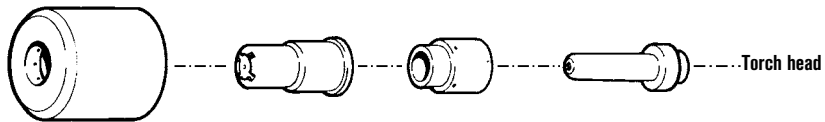
Standard consumables



	Retaining cap	Nozzle	Swirl ring	Electrode
Air	020104	020115	020101	020103
Nitrogen (N ₂)	020104	020115	020101	020167
Package quantity	1	5	1	5



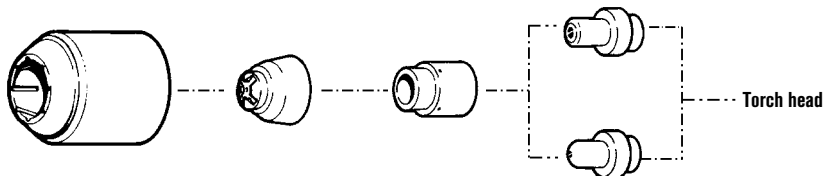
Extended consumables



	Retaining cap	Nozzle	Swirl ring	Electrode
Air	020104	020466	020101	020467
Package quantity	1	5	1	5

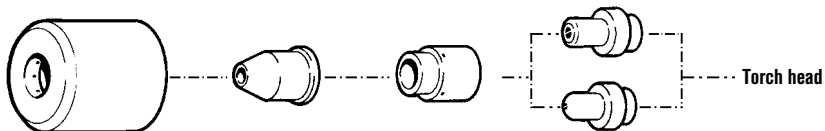


Tapered consumables



	Retaining cap	Nozzle	Swirl ring	Electrode
Air	020200	020197	020101	020103
Nitrogen (N ₂)	020200	020197	020101	020167
Package quantity	1	5	1	5

Gouging consumables

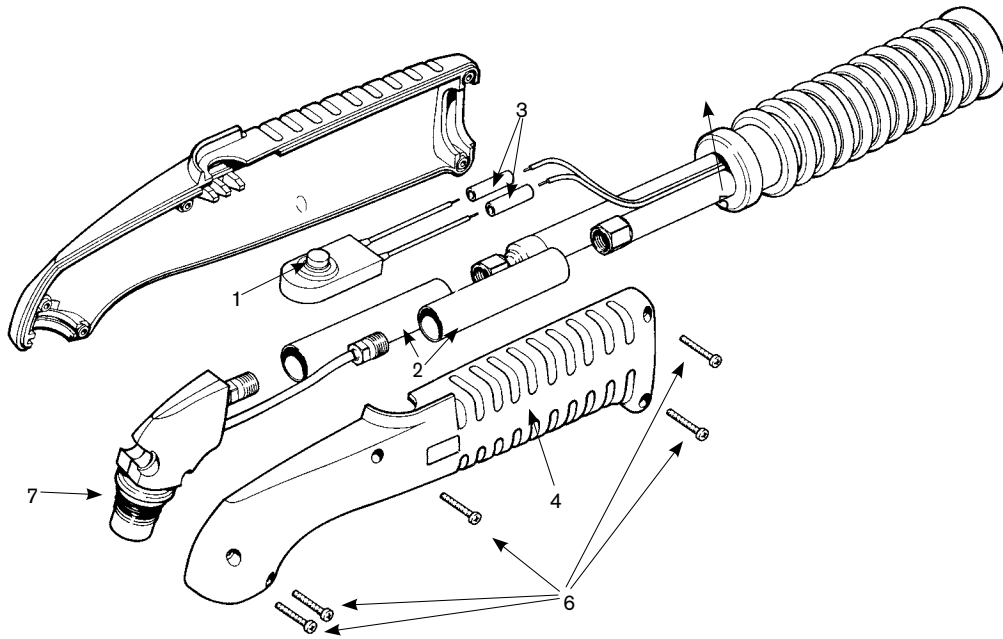


	Retaining cap	Nozzle	Swirl ring	Electrode
Air	020104	020340	020101	020103
Nitrogen (N ₂)	020104	020340	020101	020167
Package quantity	1	5	1	5

Hypertherm, MAX, HT and PAC are trademarks of Hypertherm, Inc. and may be registered in the United States and/or other countries.

MAX40/HT40

PAC140 hand torch assembly



Assembly

Part number	Description
057112*	Torch assembly with 25' (7.6 m) leads
057113*	Torch assembly with 50' (15.2 m) leads
1. 005094	Switch, torch pushbutton
2. 020536	Lead insulator (two required)
020479	Torch main body
3. 074069	Splice, butt, insulated (two required)
4. 001214	Handle (includes both halves)
5. 001260	Boot
6. 075365	Screw #6 x 3/4" (five required)
7. 044016	O-ring, Buna – N 90 Duro
029129	Torch leads, 25' (7.6 m)
029130	Torch leads, 50' (15.2 m)
023205	Work lead with clamp, 15' (4.6 m)

*Assembly includes consumables



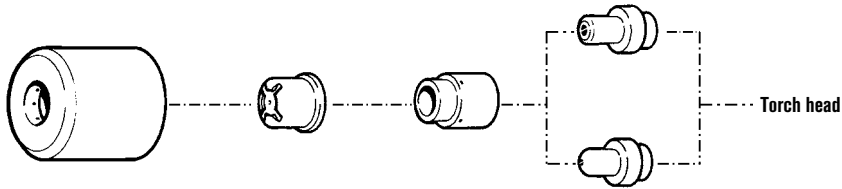
Hypertherm®

MAX40/HT40

MAX40/HT40 machine torch consumables

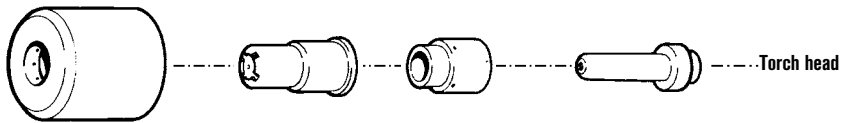


Standard consumables



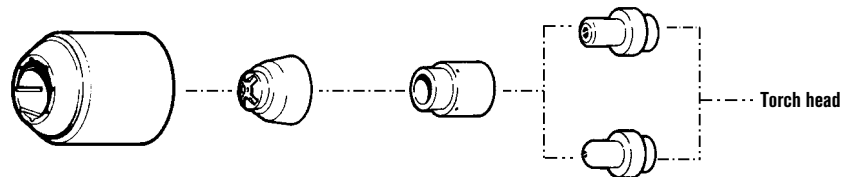
	Retaining cap	Nozzle	Swirl ring	Electrode
Air	020104	020115	020101	020103
Nitrogen (N₂)	020104	020115	020101	020167
Package quantity	1	5	1	5

Extended consumables



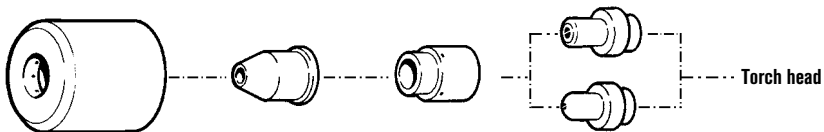
	Retaining cap	Nozzle	Swirl ring	Electrode
Air	020104	020466	020101	220467
Package quantity	1	5	1	5

Tapered consumables



	Retaining cap	Nozzle	Swirl ring	Electrode
Air	020200	020197	020101	020103
Nitrogen (N₂)	020200	020197	020101	020167
Package quantity	1	5	1	5

Gouging consumables

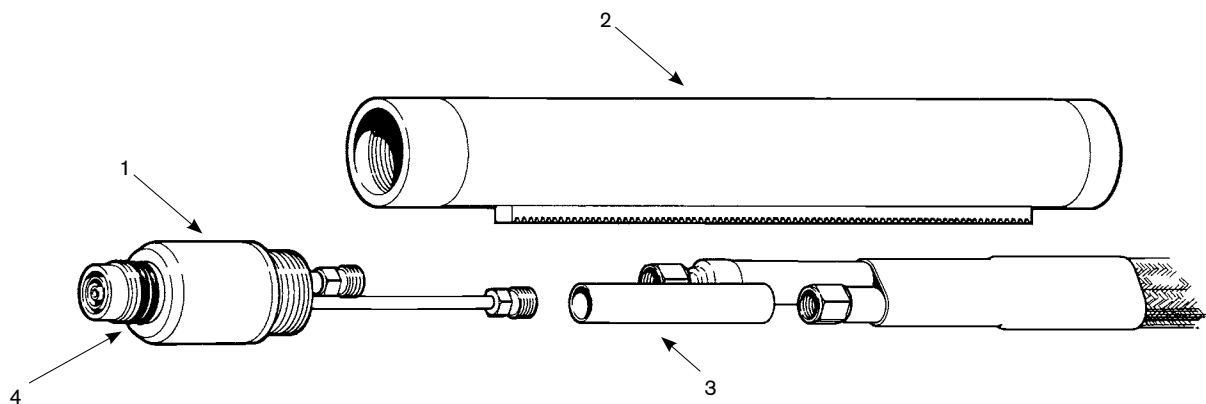


	Retaining cap	Nozzle	Swirl ring	Electrode
Air	020104	020340	020101	020103
Nitrogen (N₂)	020104	020340	020101	020167
Package quantity	1	5	1	5

Hypertherm, MAX and HT are trademarks of Hypertherm, Inc. and may be registered in the United States and/or other countries.

MAX40/HT40

MAX40/HT40 machine torch assembly



Assembly

	Part number	Description
	028287*	Torch assembly
1.	020114	Torch main body
2.	020231	Torch position sleeve, 10-3/4" (273.05 mm) (included in 028287)
2.	020269	Torch position sleeve, 18" (457.2 mm)
3.	004302	Lead insulator
4.	044016	O-ring, Buna – N 90 Duro
	028288	Torch leads, 25' (7.6 m)
	028289	Torch leads, 35' (10.7 m)
	028290	Torch leads, 50' (15.2 m)
	023205	Work lead with clamp, 15' (4.6 m)

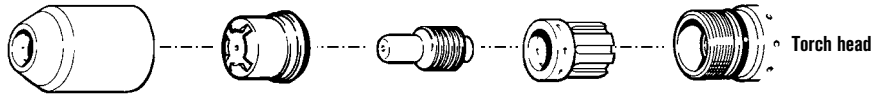
*Assembly includes consumables

Hypertherm®

MAX40cs/42/43

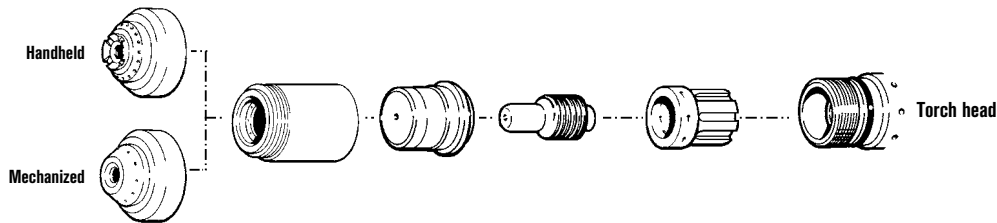
PAC120/121TS/125T hand and machine torch consumables

Standard consumables



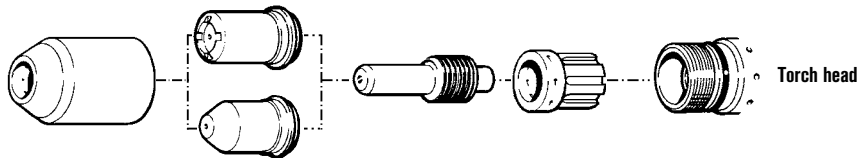
	Retaining cap	Nozzle	Electrode	Swirl ring
Package quantity	1	5	5	1

Shielded consumables



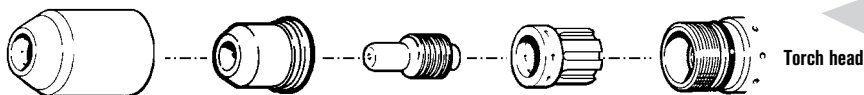
	Shield	Retaining cap	Nozzle	Electrode	Swirl ring
Handheld	120601	120600	120438	120573	020361
Mechanized	120602	120600	120438	120573	020361
Package quantity	1	5	5	5	1

Extended* consumables



	Retaining cap	Nozzle	Electrode	Swirl ring
Pipe saddle	020930	120023	120574	020361
Extended	020930	020546	120574	020361
Package quantity	1	5	5	1

Gouging consumables



	Retaining cap	Nozzle	Electrode	Swirl ring
Package quantity	1	5	5	1

Notes:

The nozzles and swirl rings shown must be used as a set.

A label located on the torch handle indicates whether the torch is a PAC121TS or PAC125T.

* In countries following CE standards, unshielded consumables may only be used in mechanized torch applications. Unshielded consumables: maintain torch-to-work distance of approximately .080" (2 mm).

** CE shield for use in countries requiring CE, CCC, GOST marks.

Hypertherm, MAX and PAC are trademarks of Hypertherm, Inc. and may be registered in the United States and/or other countries.



MAX40cs



MAX42



MAX43



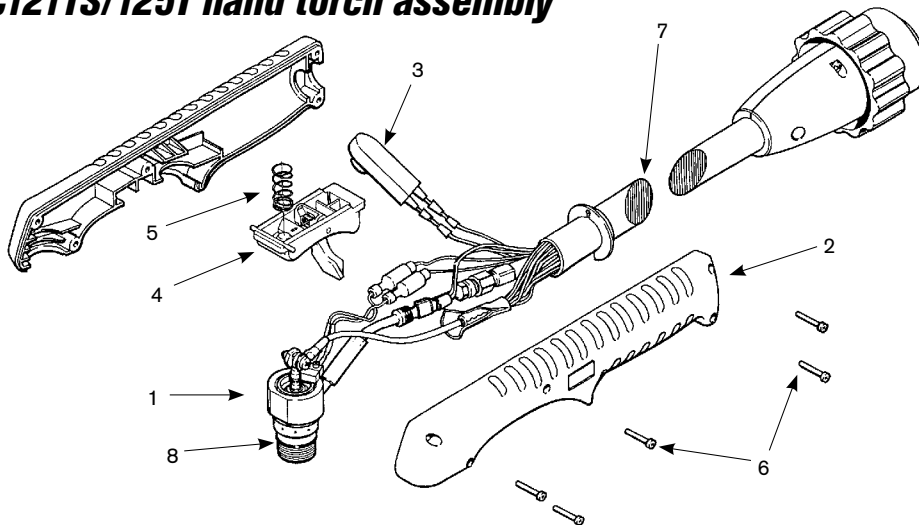
For improved performance, retrofit with the RT60 torch (see page 67).

TECHNOLOGIES

Spiral groove

MAX40cs/42/43

PAC121TS/125T hand torch assembly



Assembly – PAC121TS Torch with quick disconnects

Part number	Description
7. 129099	MAX42/43 torch leads with QD 15' (4.6 m) (N/A on MAX40cs)
7. 129001	MAX42/43 torch leads with QD 25' (7.6 m) (N/A on MAX40cs)
7. 129002	MAX42/43 torch leads with QD 50' (15.2 m) (N/A on MAX40cs)

Assembly – PAC121TS Torch without quick disconnects

Part number	Description
057172*	MAX40cs hand torch assembly without QD 25' (7.6 m) leads
057173*	MAX40cs hand torch assembly without QD 50' (15.2 m) leads
083219*	Test torch with 6' (1.8 m) leads
7. 029556	MAX40cs torch leads without QD 25' (7.6 m)
7. 029557	MAX40cs torch leads without QD 50' (15.2 m)
1. 120556	Torch main body with switch
2. 001288	Handle (includes both halves)
3. 128284	Switch, torch pushbutton, kit, HNDTCH, PBSW RPR
4. 002244	Safety trigger assembly
5. 027254	Safety trigger spring
6. 075340	Screw, #4 x 5/8" (five required)
8. 044016	O-ring, Buna – N 90 Duro
023452	MAX43 work lead with clamp, 15' (4.6 m)
023415	MAX40cs work lead with clamp, 15' (4.6 m)
023205	MAX42 work lead with clamp, 15' (4.6 m)

Assembly – PAC125T

Part number	Description
083128*	MAX42/43 safety trigger torch assembly with 25' (7.6 m) leads
083129*	MAX42/43 safety trigger torch assembly with 50' (15.2 m) leads
083219*	Test torch with 6' (1.8 m) leads
1. 120570	Torch main body with switch
2. 001288	Handle (includes both halves)
3. 128284	Switch, torch pushbutton, kit, HNDTCH, PBSW RPR
4. 002244	Safety trigger assembly
5. 027254	Safety trigger spring
6. 075340	Screw, #4 x 5/8" (five required)
7. 129479	MAX42/43 torch leads with QD 15' (4.6 m) (N/A on MAX40cs)
7. 129352	MAX42/43 torch leads with QD 25' (7.6 m) (N/A on MAX40cs)
7. 129353	MAX42/43 torch leads with QD 50' (15.2 m) (N/A on MAX40cs)
8. 044016	O-ring, Buna – N 90 Duro
023452	MAX43 work lead with clamp, 15' (4.6 m)
023415	MAX40cs work lead with clamp, 15' (4.6 m)
023205	MAX42 work lead with clamp, 15' (4.6 m)

*Assembly includes consumables

Note:

A label located on the torch handle indicates whether the torch is a PAC121TS or PAC125T.

Hypertherm, MAX and PAC are trademarks of Hypertherm, Inc. and may be registered in the United States and/or other countries.

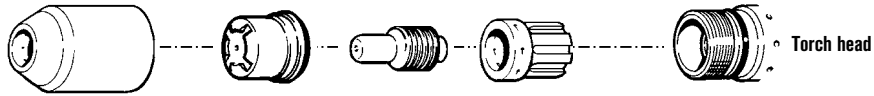


Hypertherm®

MAX40cs/42/43

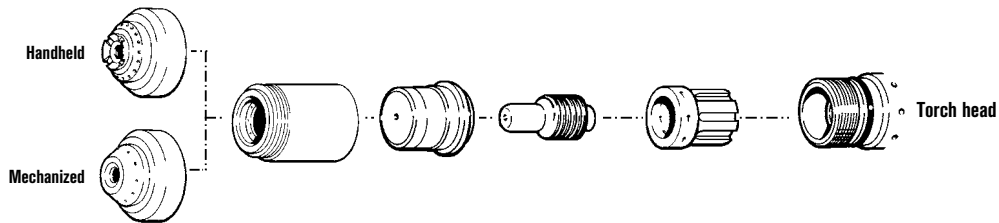
PAC121P hand and machine torch consumables

Standard consumables



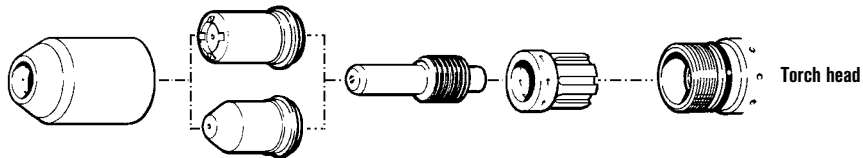
	Retaining cap	Nozzle	Electrode	Swirl ring
Package quantity	1	5	5	1

Shielded consumables



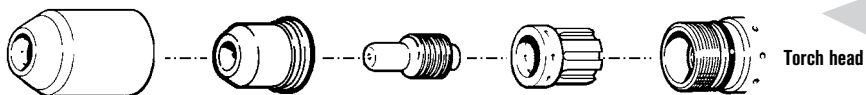
	Shield	Retaining cap	Nozzle	Electrode	Swirl ring
Handheld	120601	120600	120438	120573	020361
Mechanized	120602	120600	120438	120573	020361
Package quantity	1	5	5	5	1

Extended* consumables



	Retaining cap	Nozzle	Electrode	Swirl ring
Pipe saddle	020930	120023	120574	020361
Extended	020930	020546	120574	020361
Package quantity	1	5	5	1

Gouging consumables



	Retaining cap	Nozzle	Electrode	Swirl ring
Package quantity	1	5	5	1

Notes:

The nozzles and swirl rings shown must be used as a set.

* In countries following CE standards, unshielded consumables may only be used in mechanized torch applications. Unshielded consumables: maintain torch-to-work distance of approximately .080" (2 mm).

** CE shield for use in countries requiring CE, CCC, GOST marks.

Hypertherm, MAX and PAC are trademarks of Hypertherm, Inc. and may be registered in the United States and/or other countries.



MAX40cs



MAX42



MAX43



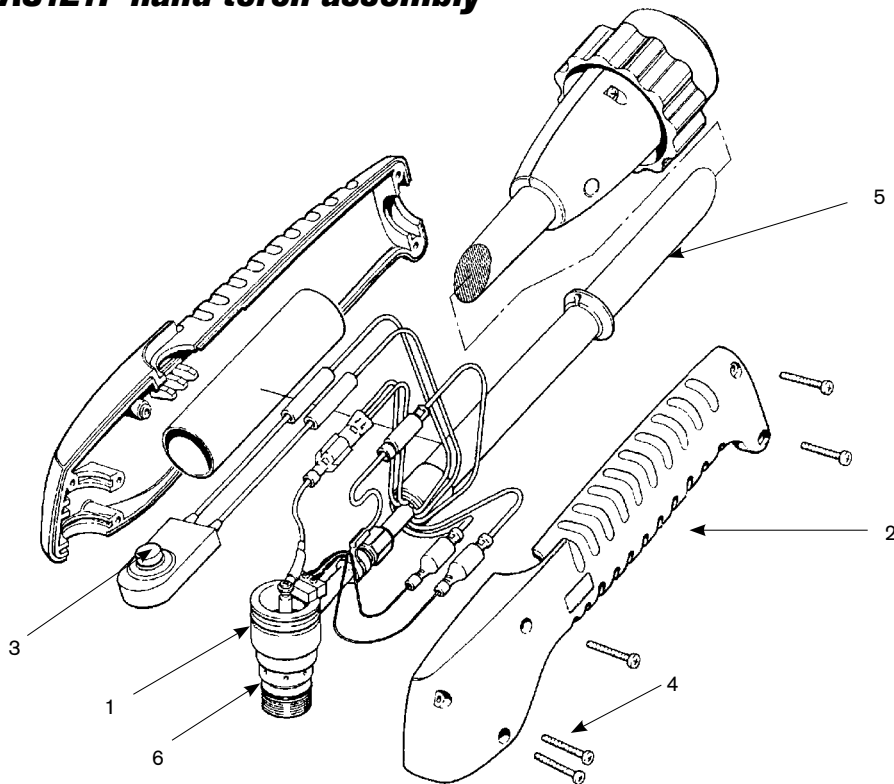
For improved performance, retrofit with the RT60 torch (see page 67).

TECHNOLOGIES

Spiral groove

MAX40cs/42/43

PAC121P hand torch assembly



Assembly – PAC121P torch with quick disconnects

Part number	Description
5. 029391	MAX42/43 torch leads with QD 25' (7.6 m) (N/A on MAX40cs)
5. 029392	MAX42/43 torch leads with QD 50' (15.2 m) (N/A on MAX40cs)

Assembly – PAC121P torch without quick disconnects

Part number	Description
057176*	MAX40cs hand torch assembly without QD 25' (7.6 m) leads
057177*	MAX40cs hand torch assembly without QD 50' (15.2 m) leads
083219*	Test torch with 6' (1.8 m) leads
5. 029483	MAX40cs torch leads without QD 25' (7.6 m)
5. 029484	MAX40cs torch leads without QD 50' (15.2 m)
071069*	MAX42/43 hand torch assembly, 25' (7.6 m) leads
071070*	MAX42/43 hand torch assembly, 50' (15.2 m) leads
1. 120013	Torch main body with switch
2. 001215	Handle (includes both halves)
3. 005094	Switch, torch pushbutton
4. 075365	Screw, #6 x 3/4" (five required)
6. 044016	O-ring, Buna – N 90 Duro
023452	MAX43 work lead with clamp, 15' (4.6 m)
023415	MAX40cs work lead with clamp, 15' (4.6 m)
023205	MAX42 work lead with clamp, 15' (4.6 m)

*Assembly includes consumables

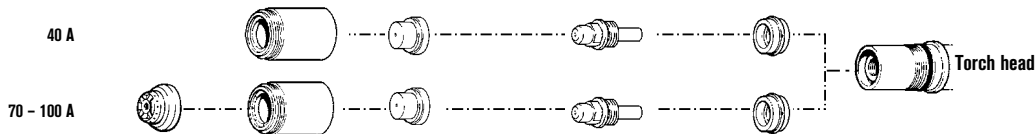


Hypertherm®

MAX70/100

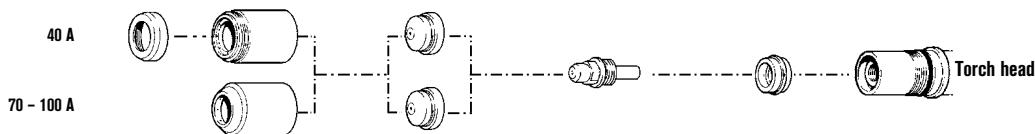
PAC130 hand torch consumables

Shielded consumables



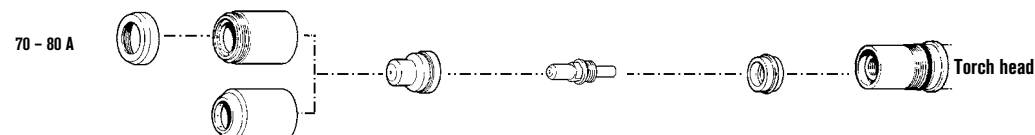
	Shield	Retaining cap	Nozzle	Electrode (Air)	or	Electrode (Nitrogen)	Swirl ring
40 A		020490	020396	120433		020193	020194
70 A	020335	020336	020397	120433		020193	020194
80 A	020335	020336	020397	120433		020193	020194
100 A	020335	020336	020337	120433		020193	020194
Package quantity	1	1	5	5		5	1

Unshielded* consumables



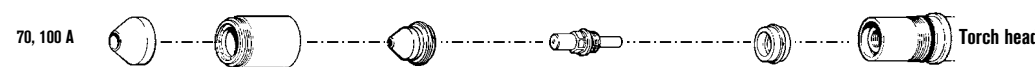
	Deflector / Retaining cap**	or	Retaining cap	Nozzle	Electrode (Air)	or	Electrode (Nitrogen)	Swirl ring
40 A	020333 / 020336		020184	020203	120433		020193	020194
70 A	020333 / 020336		020184	020345	120433		020193	020194
80 A	020333 / 020336		020184	020345	120433		020193	020194
100 A	020333 / 020336		020184	020195	120433		020193	020194
Package quantity	1		1	5	5		5	1

Extended consumables



	Deflector / Retaining cap**	or	Retaining cap	Nozzle	Electrode	Swirl ring
70 - 80 A Air	020333 / 020336		020184	020563	120444	020194
70 - 80 A Nitrogen (N ₂)	020333 / 020336		020184	020563	020866	020194
Package quantity	1		1	5	5	1

Gouging consumables



	Shield	Retaining cap	Nozzle	Electrode	Swirl ring
70 A	020712	020336	020878	020744	020194
100 A	020712	020336	120459	020744	020194
Package quantity	1	1	5	5	1



MAX70



MAX100



TECHNOLOGIES

HyLife®

Vented shield

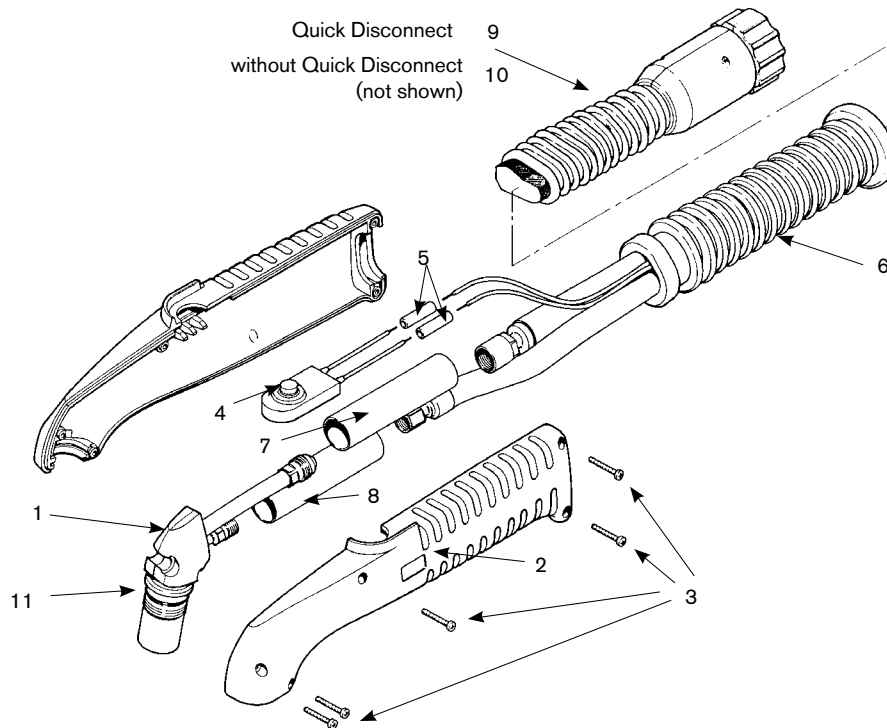
* In countries following CE standards, unshielded consumables may only be used in mechanized torch applications. Unshielded consumables: maintain torch-to-work distance of approximately .080" (2 mm).

** Non-shielded cutting may use a retaining cap or a combination deflector/retaining cap.

Hypertherm, MAX, PAC and HyLife are trademarks of Hypertherm, Inc. and may be registered in the United States and/or other countries.

MAX70/100

PAC130 hand torch assembly



Assembly – torch leads with quick disconnects

Part number	Description
059093*	Torch assembly with QD 25' (7.6 m)
059094*	Torch assembly with QD 50' (15.2 m)
059095*	Torch assembly with QD 75' (22.9 m)

Assembly – torch leads without quick disconnects

Part number	Description
059076	Torch assembly without QD 25' (7.6 m)
059077	Torch assembly without QD 50' (15.2 m)
059078	Torch assembly without QD 75' (22.9 m)
10. 029198	Leads, hand torch without QD 25' (7.6 m)
10. 029199	Leads, hand torch without QD 50' (15.2 m)
10. 029229	Leads, hand torch without QD 75' (22.9 m)
1. 020461	Torch main body
2. 001214	Handle (both halves included)
3. 075365	Screw, #6 x 3/4" (five required)
4. 005094	Switch, pushbutton, torch
5. 074069	Splice, butt, insulated (two required)
6. 001217	Boot
7. 024249	Negative lead insulator, 1 1/16 x 3 1/2"
8. 020536	Pilot arc lead insulator, 9/16 x 2 1/2"
9. 029667	Leads, hand torch with QD 25' (7.6 m)
9. 029668	Leads, hand torch with QD 50' (15.2 m)
9. 029669	Leads, hand torch with QD 75' (22.9 m)
11. 026018	O-ring, Silico
023682	MAX70 work lead with clamp, 15' (4.6 m)
023209	MAX100 work lead with clamp, 25' (7.6 m)

*Assembly includes consumables

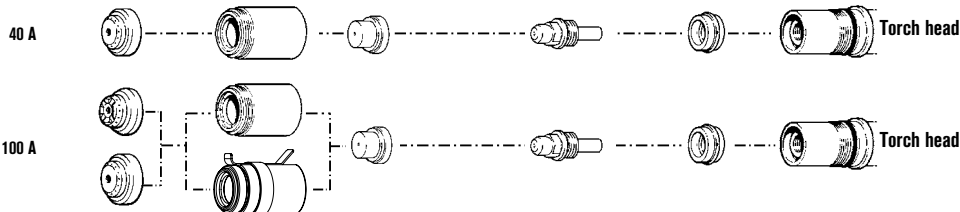


Hypertherm®

MAX70/100

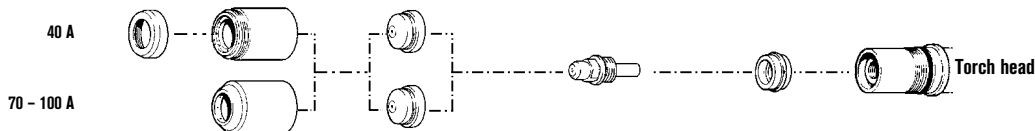
MAX70/MAX100 machine torch consumables

Shielded consumables



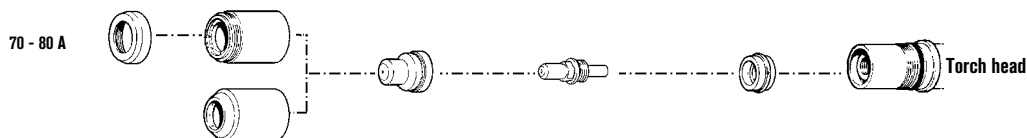
	Shield	Retaining cap	Nozzle	Electrode (Air)	Electrode or (Nitrogen)	Swirl ring
40 A	020492	020490	020396	120433	020193	020194
70 A	020334	020336	020397	120433	020193	020194
80 A	020334	020336	020397	120433	020193	020194
100 A	020334	020336	020337	120433	020193	020194
70 - 100 A Ohmic		120966				
Package quantity	1	1	5	5	5	1

Unshielded* consumables



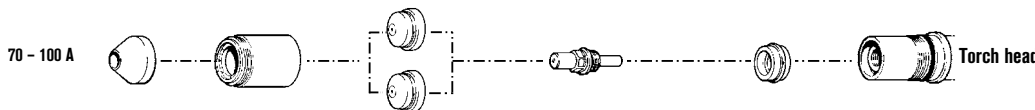
	Deflector / Retaining cap**	Retaining cap	Nozzle	Electrode (Air)	Electrode or (Nitrogen)	Swirl ring
40 A	020333 / 020336	020184	020203	120433	020193	020194
70 A	020333 / 020336	020184	020345	120433	020193	020194
80 A	020333 / 020336	020184	020345	120433	020193	020194
100 A	020333 / 020336	020184	020195	120433	020193	020194
Package quantity	1	1	5	5	5	1

Extended consumables



	Deflector / Retaining cap**	Retaining cap	Nozzle	Electrode	Swirl ring
70 - 80 A Air	020333 / 020336	020184	020563	120444	020194
70 - 80 A Nitrogen (N ₂)	020333 / 020336	020184	020563	020866	020194
Package quantity	1	1	5	5	1

Gouging consumables



	Shield	Retaining cap	Nozzle	Electrode	Swirl ring
70 A	020712	020336	020878	020744	020194
100 A	020712	020336	120459	020744	020194
Package quantity	1	1	5	5	1



MAX70



MAX100

TECHNOLOGIES
HyLife®
Vented shield

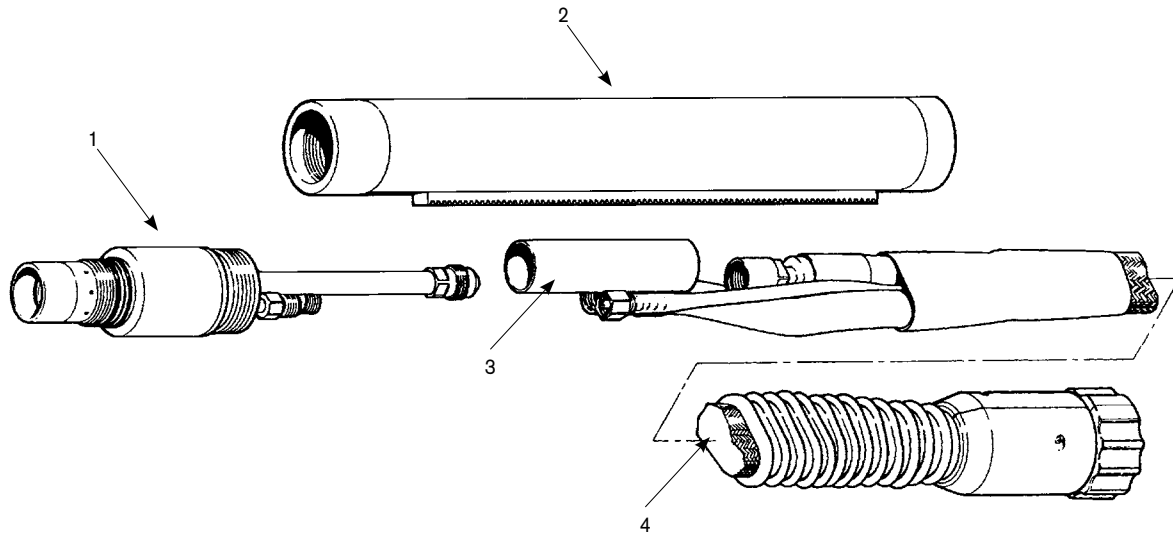
* In countries following CE standards, unshielded consumables may only be used in mechanized torch applications. Unshielded consumables: maintain torch-to-work distance of approximately .080" (2 mm).

** Non-shielded cutting may use a retaining cap or a combination deflector/retaining cap.

Hypertherm, MAX, PAC and HyLife are trademarks of Hypertherm, Inc. and may be registered in the United States and/or other countries.

MAX70/100

MAX70/MAX100 machine torch assembly



Assembly – torch leads with quick disconnects

Part number	Description
059096	MAX100 torch assembly with QD 25' (7.6 m)
059238	MAX100 torch assembly with QD with 8.5" (216 mm) torch sleeve 25' (7.6 m)
059167	MAX100 International torch assembly with QD 35' (10.7 m)
059239	MAX100 torch assembly with QD with 8.5" (216 mm) torch sleeve 35' (10.7 m)
059097	MAX100 torch assembly with QD 50' (15.2 m)
059240	MAX100 torch assembly with QD with 8.5" (216 mm) torch sleeve 50' (15.2 m)
059098	MAX100 torch assembly with QD 75' (22.9 m)
4. 028524	Machine torch leads with QD 25' (7.6 m)
4. 028527	Machine torch leads with QD 35' (10.7 m)
4. 028525	Machine torch leads with QD 50' (15.2 m)
4. 028526	Machine torch leads with QD 75' (22.9 m)

Assembly – torch leads without quick disconnects

Part number	Description
4. 028326	Machine torch leads without QD 25' (7.6 m) (not shown)
4. 028330	Machine torch leads without QD 35' (10.7 m) (not shown)
4. 028327	Machine torch leads without QD 50' (15.2 m) (not shown)
4. 028335	Machine torch leads without QD 75' (22.9 m) (not shown)
1. 020201	Torch main body, 180°
2. 020243	Torch position sleeve, 10 1/4" (260.35 mm)
2. 020270	Torch position sleeve, 18" (457.2 mm)
3. 024173	Pilot arc lead insulator, 9/16" x 2 1/2"
023682	MAX70 work lead with clamp, 15' (4.6 m)
023209	MAX100 work lead with clamp, 25' (7.6 m)

*Assembly includes consumables

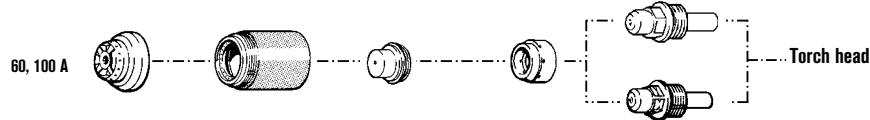
Hypertherm®

MAX100D

PAC160/E hand torch consumables

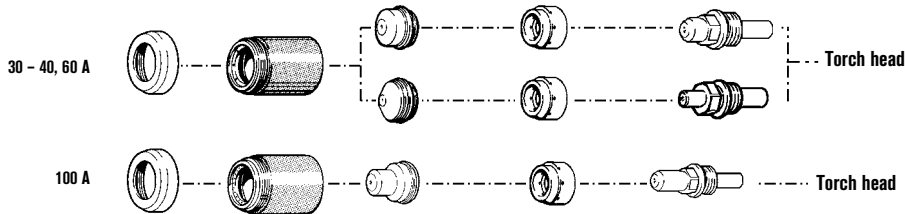


Shielded consumables



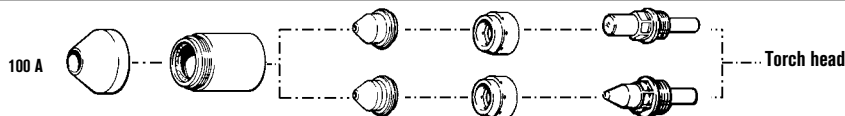
Metal	Plasma gas	Shield gas	Amps	Shield	Retaining cap	Nozzle	Swirl ring	Electrode
Mild steel/ stainless/ aluminum	Nitrogen (N ₂)	Air	60 A	020335	020756	120336	020706	020193
	Nitrogen (N ₂)	Carbon dioxide (CO ₂)	60 A	020335	020756	120336	020706	020193
	Nitrogen (N ₂)	Air	100 A	020335	020846	020705	020706	020193
	Nitrogen (N ₂)	Carbon dioxide (CO ₂)	100 A	020335	020846	020705	020706	020193
Mild steel/ aluminum	Air	Air	60 A	020335	020756	120336	020706	120433
	Air	Air	100 A	020335	020846	020705	020706	120433
Stainless steel/ aluminum	H35	Nitrogen (N ₂)	100 A	020335	020846	020705	020706	020193
Stainless steel	H35-Nitrogen (N ₂)	Nitrogen (N ₂)	100 A	020335	020846	020705	020706	020193
Aluminum	H35	Air	100 A	020335	020846	020705	020706	020193
	Package quantity			1	1	5	1	5

Unshielded*/Extended consumables



Metal	Plasma gas	Shield gas	Amps	Deflector	Retaining cap	Nozzle	Swirl ring	Electrode
Mild steel/ aluminum	Air	Air	60 A	020333	020756	020922	020706	120433
	Air	Air	100 A	020333	020846	020754	020706	120444
Stainless steel	Air	Air	30 - 40 A	020333	020756	020921	020950	020951
	Nitrogen (N ₂)	Air	60 A	020333	020756	020922	020706	020193
	Nitrogen (N ₂)	Air	100 A	020333	020846	020754	020706	020887
	Package quantity			1	1	5	1	5

Gouging consumables



Metal	Plasma gas	Shield gas	Amps	Shield	Retaining cap	Nozzle	Swirl ring	Electrode
Mild steel/stainless/ aluminum	H35	Air	100 A	020712	020699	020704	020750	020703
Stainless steel/ aluminum	H35	Nitrogen (N ₂)	100 A	020712	020699	020704	020750	020703
Mild steel	Air	Air	100 A	020712	020699	020745	020750	020744
	Package quantity			1	1	5	1	5



PAC160 hand torch



PAC160E gouging torch

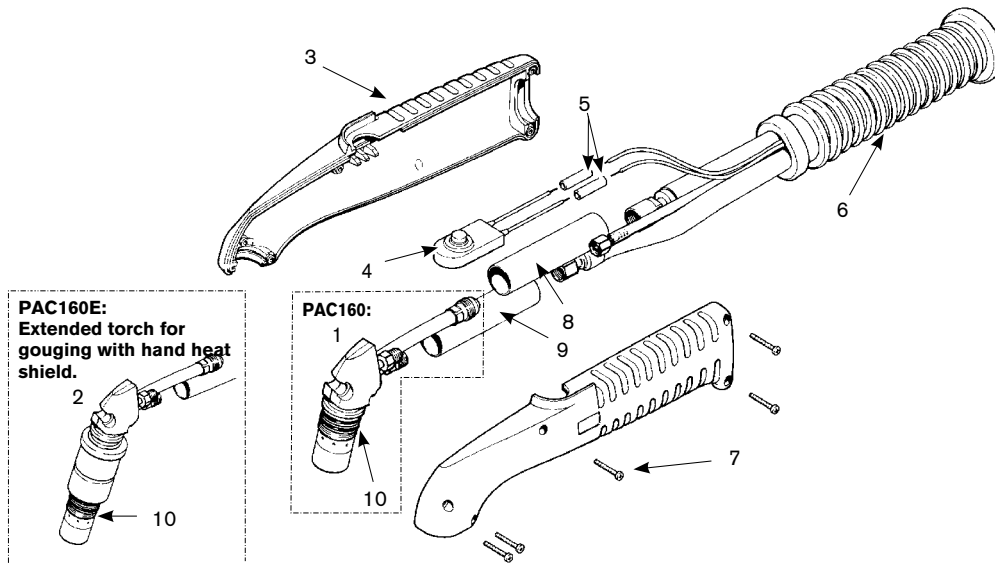
TECHNOLOGIES

Vented shield

* In countries following CE standards, unshielded consumables may only be used in mechanized torch applications. Unshielded consumables: maintain torch-to-work distance of approximately .080" (2 mm).

MAX100D

PAC160/E hand and gouging torch assemblies



Assembly

Part number	Description
020711	Hand heat shield (shown at left) – for PAC160E gouging torch only
1. 020761	PAC160 torch main body
2. 020693	PAC160E torch main body
3. 001214	Handle, MAX100D, hand torch (both halves included)
4. 005094	Switch, pushbutton, torch
5. 074069	Splice, butt, insulated (two required)
6. 001217	Boot, MAX100D torch
7. 075365	Screw, #6 x 3/4" (five required)
8. 020468	Negative lead insulator, 1 1/16 x 31/2"
9. 020536	Pilot arc lead insulator, 9/16 x 21/2"
10. 058019	O-ring: Viton .801 x .071 (two required)
059124*	PAC160 hand torch assembly with 25' (7.6 m) leads
059125*	PAC160 hand torch assembly with 50' (15.2 m) leads
059126*	PAC160 hand torch assembly with 75' (22.9 m) leads
059112*	PAC160E hand torch assembly with 25' (7.6 m) leads
059113*	PAC160E hand torch assembly with 50' (15.2 m) leads
059114*	PAC160E hand torch assembly with 75' (22.9 m) leads
029730	MAX100D hand torch with 25' (7.6 m) leads
029731	MAX100D hand torch with 50' (15.2 m) leads
029732	MAX100D hand torch with 75' (22.9 m) leads
028558	MAX100D quick disconnect assembly
023209	Work lead with clamp, 25' (7.6 m)

*Assembly includes consumables



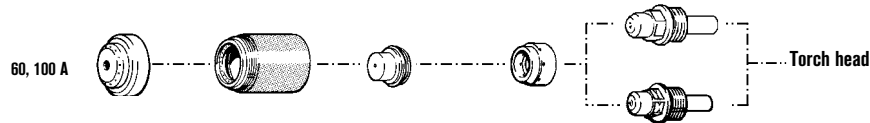
Hypertherm®

MAX100D

MAX100D machine torch consumables

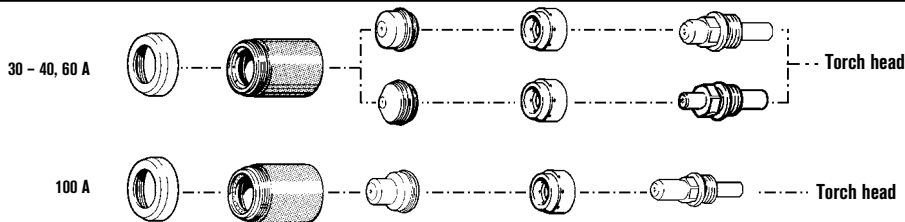


Shielded consumables



Metal	Plasma gas	Shield gas	Amps	Shield	Retaining cap	Nozzle	Swirl ring	Electrode
Mild steel/ stainless/ aluminum	Nitrogen (N ₂)	Air	60 A	020334	020756	120336	020706	020193
	Nitrogen (N ₂)	Carbon dioxide (CO ₂)	60 A	020334	020756	120336	020706	020193
	Nitrogen (N ₂)	Air	100 A	020334	020846	020705	020706	020193
	Nitrogen (N ₂)	Carbon dioxide (CO ₂)	100 A	020334	020846	020705	020706	020193
Mild steel/ aluminum	Air	Air	60 A	020334	020756	120336	020706	120433
	Air	Air	100 A	020334	020846	020705	020706	120433
Stainless steel/ aluminum	H35	Nitrogen (N ₂)	100 A	020334	020846	020705	020706	020193
Stainless steel	H35-Nitrogen (N ₂)	Nitrogen (N ₂)	100 A	020334	020846	020705	020706	020193
Aluminum	H35	Air	100 A	020334	020846	020705	020706	020193
	Package quantity			1	1	5	1	5

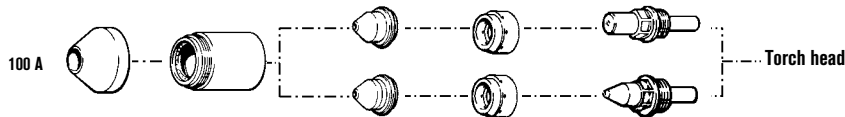
Unshielded*/Extended consumables



Metal	Plasma gas	Shield gas	Amps	Deflector	Retaining cap	Nozzle	Swirl ring	Electrode
Mild steel/ aluminum	Air	Air	60 A	020333	020756	020922	020706	120433
	Air	Air	100 A	020333	020846	020754	020706	120444
Stainless steel	Air	Air	30 - 40 A	020333	020756	020921	020950	020951
	Nitrogen (N ₂)	Air	60 A	020333	020756	020922	020706	020193
	Nitrogen (N ₂)	Air	100 A	020333	020846	020754	020706	020887
	Package quantity			1	1	5	1	5



Gouging consumables



Metal	Plasma gas	Shield gas	Amps	Shield	Retaining cap	Nozzle	Swirl ring	Electrode
Mild steel/stainless/ aluminum	H35	Air	100 A	020712	020699	020704	020750	020703
Stainless steel/ aluminum	H35	Nitrogen (N ₂)	100 A	020712	020699	020704	020750	020703
Mild steel	Air	Air	100 A	020712	020699	020745	020750	020744
	Package quantity			1	1	5	1	5

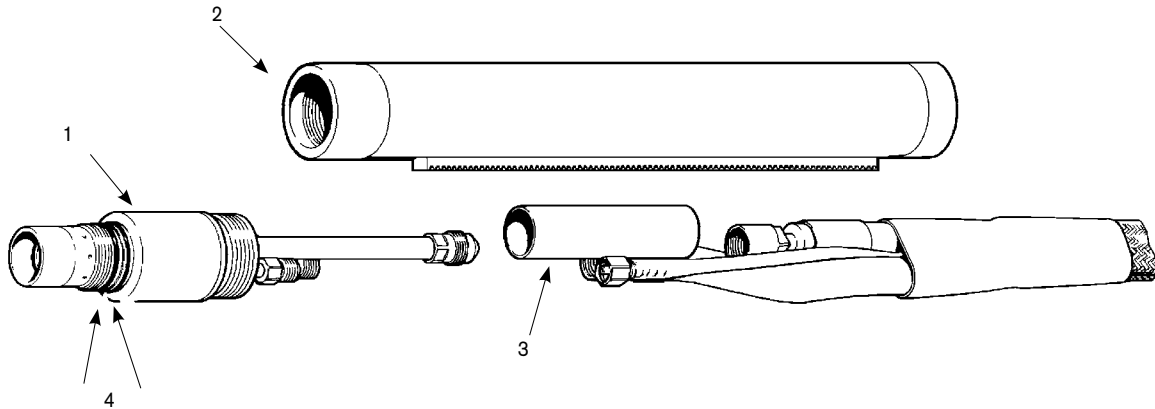
TECHNOLOGIES
Vented shield

* In countries following CE standards, unshielded consumables may only be used in mechanized torch applications. Unshielded consumables: maintain torch-to-work distance of approximately .080" (2 mm).

Hypertherm and MAX are trademarks of Hypertherm, Inc. and may be registered in the United States and/or other countries.

MAX100D

MAX100D machine torch assembly



Assembly

Part number	Description
028596*	MAX100D machine torch assembly
1. 020713	MAX100D machine torch main body
2. 020243	MAX100D torch positioning sleeve
3. 020468	Negative lead insulator, 1 1/16 x 3 1/2"
4. 058019	O-ring: Viton .801 x .071 (two required)
059115*	MAX100D machine torch assembly with 25' (7.6 m) leads
059116*	MAX100D machine torch assembly with 50' (15.2 m) leads
059117*	MAX100D machine torch assembly with 75' (22.9 m) leads
028555	MAX100D machine torch leads, 25' (7.6 m)
028556	MAX100D machine torch leads, 50' (15.2 m)
028557	MAX100D machine torch leads, 75' (22.9 m)
028910	MAX100D quick disconnect assembly
002190	Boot, 80/100 amp quick disconnect
023209	Work lead with clamp, 25' (7.6 m)

*Assembly includes consumables



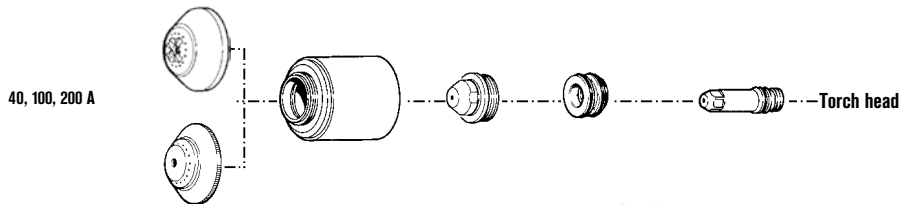
Hypertherm®

MAX200

PAC200 T/E hand torch consumables



Shielded consumables

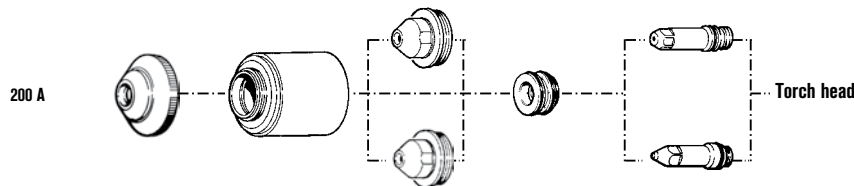


Metal	Plasma gas	Shield gas	Amps	Shield	Retaining cap	Nozzle	Swirl ring	Electrode
Mild steel/ stainless/ aluminum	Air	Air	40 A	020917	020915	020689	020613	220021
	Air	Air	100 A	020919	020915	020611	020607	220021
	Air	Air	200 A	020918	020915	020608	020607	220021
Stainless steel/ aluminum	Nitrogen (N ₂)	Carbon dioxide (CO ₂)	200 A	020918	020915	020608	020607	020415
	H35	Nitrogen (N ₂)	100 A	020919	020915	020611	020607	020415
Mild steel	Oxygen (O ₂)	Air	200 A	020918	020915	020608	020607	020415
	Oxygen (O ₂)	Air	100 A	020919	020915	020616	020617	220021
Stainless steel	Oxygen (O ₂)	Air	200 A	020918	020915	020605	020604	220021
	H35	Nitrogen (N ₂)	200 A	020920	020915	020608	020607	020415
Aluminum	H35	Nitrogen (N ₂)	200 A	020918	020915	020608	020607	020415
	Package quantity			1	1	5	1	5



PAC200T hand torch

Gouging consumables



Metal	Plasma gas	Shield gas	Amps	Shield	Retaining cap	Nozzle	Swirl ring	Electrode
Mild steel	Air	Air	200 A	020891	020882	020615	020607	220021
	H35	Air	200 A	020891	020882	020934	020607	020933
Stainless steel/ aluminum	H35	Nitrogen (N ₂)	200 A	020891	020882	020934	020607	020933
	Package quantity			1	1	5	1	5



PAC200E gouging torch

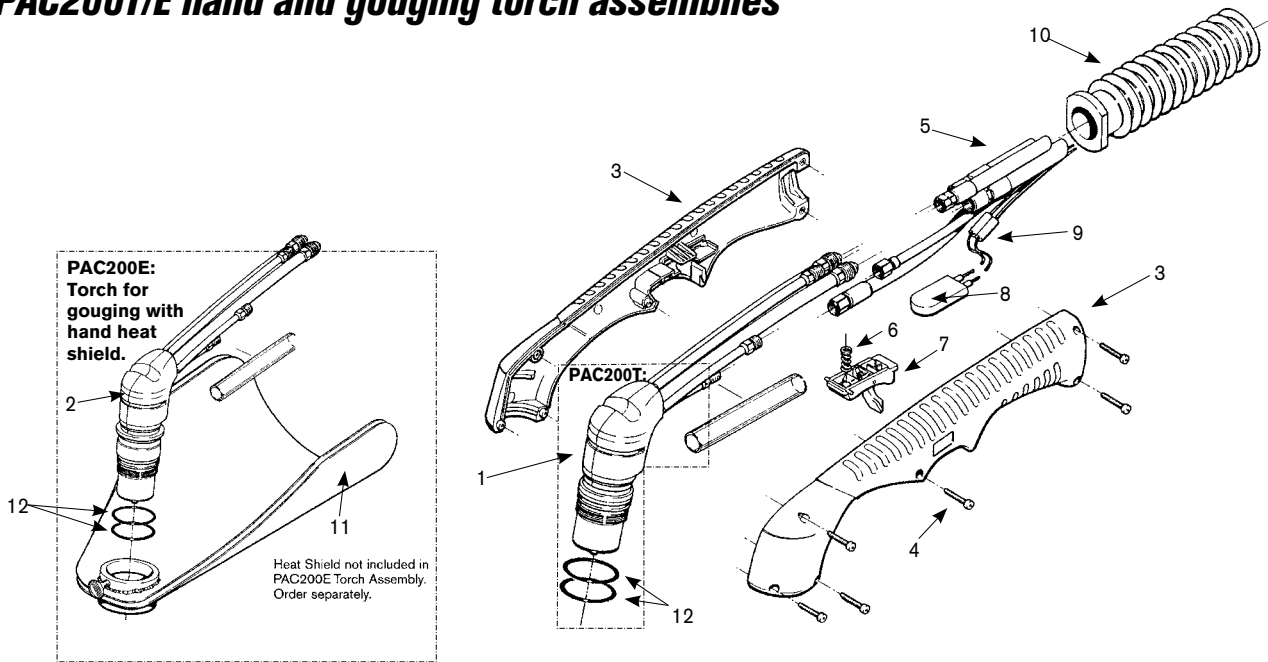
TECHNOLOGIES

Vented shield
Chambered swirl ring

* In countries following CE standards, unshielded consumables may only be used in mechanized torch applications. Unshielded consumables: maintain torch-to-work distance of approximately .080" (2 mm).

MAX200

PAC200T/E hand and gouging torch assemblies



Assembly

Part number	Description
073189*	PAC200T 90° hand cutting torch assembly with 25' (7.6 m) leads
073190*	PAC200T 90° hand cutting torch assembly without leads
073111*	PAC200E 65° hand gouging torch assembly with 25' (7.6 m) leads
073188*	PAC200E gouging torch assembly without leads
029865	Torch-to-power supply with 25' (7.6 m) leads
028715	Torch-to-power supply with 50' (15.2 m) leads
028716	Torch-to-power supply with 75' (22.9 m) leads
028717	Torch-to-power supply with 100' (30.5 m) leads
028718	Torch-to-power supply with 125' (38.1 m) leads
028719	Torch-to-power supply with 150' (45.8 m) leads
1. 120045	Torch main body, PAC200T hand torch 90°
2. 020908	Torch main body, PAC200E gouging torch 65°
3. 001412	Handle, PAC200T 90° (both halves included)
001440	Handle, PAC200E 65° (both halves included) (not shown)
4. 075365	Screw, #6 x 3/4", phillips head, pan (six required)
5. 046065	Insul. tube, 9/16 ID x.03 WL, Teflon (included with lead sets)
6. 027254	Trigger spring, PAC200T/E
7. 002244	Safety trigger, PAC200T/E
8. 005094	Push button switch (included with lead sets listed above)
9. 074069	Splice (two required)
10. 001217	Boot
11. 020881	Hand heat shield, PAC200E gouging torch
12. 044027	O-ring, Buna (two required)
027347	Water tube removal tool
023345	Work lead with clamp 25' (7.6 m)
023420	Work lead with clamp 50' (15.2 m)

*Assembly includes consumables



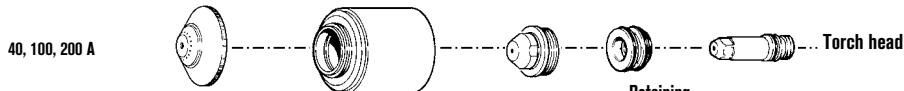
Hypertherm[®]

MAX200

MAX200 machine torch consumables

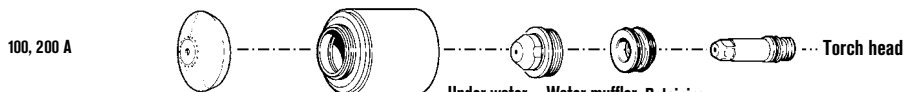


Cutting consumables



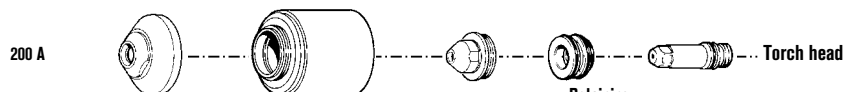
Metal	Plasma gas	Shield gas	Amps	Shield	Retaining cap	Nozzle	Swirl ring	Electrode
Mild steel/ stainless/ aluminum	Nitrogen (N ₂)	Carbon dioxide (CO ₂)	200 A	020424	120837	020608	020607	020415
Mild steel/ stainless	Air	Air	200 A	020424	120837	020608	020607	220021
Mild steel/ aluminum	Air	Air	40 A	020688	020423	020689	020613	220021
Mild steel/ aluminum	Air	Air	100 A	020448	120837	020611	020607	220021
Stainless steel/ aluminum	H35	Nitrogen (N ₂)	100 A	020448	120837	020611	020607	020415
Stainless steel/ aluminum	H35	Nitrogen (N ₂)	200 A	020602	120837	020608	020607	020415
Mild steel	Oxygen (O ₂)	Air	100 A	020448	120837	020616	020617	220021
Mild steel	Oxygen (O ₂)	Air	200 A	020424	120837	020605	020604	220021†
Stainless steel	Nitrogen (N ₂)	Air	200 A	020424	120837	020608	020607	020415
Stainless steel	Air	Air	200 A	020448	120837	020608	020607	220021
Aluminum	Nitrogen (N ₂)	Air	200 A	020424	120837	020611	020607	020415
Package quantity				1	1	5	1	5

Cutting with under water or water muffler* consumables



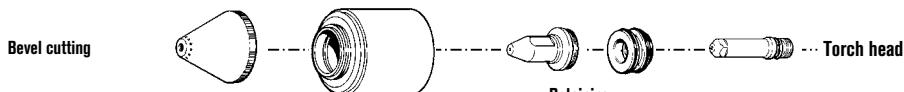
Metal	Plasma gas	Shield gas	Amps	Under water shield	Water muffler shield	Retaining cap	Nozzle	Swirl ring	Electrode
Mild steel/ stainless/ aluminum	Air	Air	100 A	020448	020618	020423	020611	020607	220021
Mild steel/ stainless/ aluminum	Air	Air	200 A	020424	020566	020423	020608	020607	220021
Stainless steel/ aluminum	Nitrogen (N ₂)	Air	200 A	020424	020566	020423	020608	020607	020415
Stainless steel/ aluminum	Nitrogen (N ₂)	Carbon dioxide (CO ₂)	200 A	020424	020566	020423	020608	020607	020415
Mild steel	Oxygen (O ₂)	Air	100 A	020448	020618	020423	020616	020617	220021
Mild steel	Oxygen (O ₂)	Air	200 A	020424	020566	020423	020605	020604	220021
Package quantity				1	1	1	5	1	5

Gouging consumables



Metal	Plasma gas	Shield gas	Amps	Shield	Retaining cap	Nozzle	Swirl ring	Electrode
Mild steel	Air	Air	200 A	020485	020423	020615	020607	220021
Stainless steel	H35	Nitrogen (N ₂)	200 A	020485	020423	020615	020607	220415
Aluminum	H35	Nitrogen (N ₂)	200 A	020485	020423	020615	020607	220021
Package quantity				1	1	5	1	5

Bevel consumables



Metal	Plasma gas	Shield gas	Amps	Shield	Retaining cap	Nozzle	Swirl ring	Electrode	Water tube
Mild steel	Oxygen (O ₂)	Air	200 A	120260	020423	120259	120833	120258	120257
Package quantity				1	1	5	1	5	

128380 – Standard body – 2" sleeve

120356 – Stainless steel body

TECHNOLOGIES
HyLife[®]
SilverPlus[®]
Vented shield
Chambered swirl ring

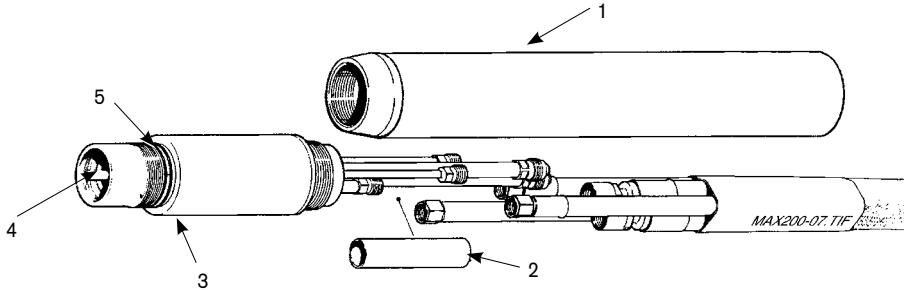
* Water muffler cannot be used with 2" 120356 stainless steel torch or with ohmic height sensing.

† 220083 SilverPlus optional

Hypertherm, MAX, HyLife and SilverPlus are trademarks of Hypertherm, Inc. and may be registered in the United States and/or other countries.

MAX200

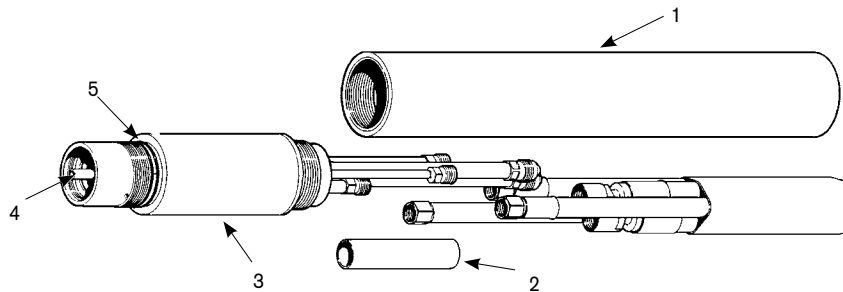
MAX200 machine torch assemblies



Assembly

Standard body 2"		Optional body 1-3/4"	Description
Part number	Part number		
128380*	128364		MAX200 machine torch assembly
028383*	028383		Torch leads, 25' (7.6 m)
028384*	028384		Torch leads, 50' (15.2 m)
1.	120894	020431	Torch mounting sleeve
2.	020536	020536	Lead insulator, 9/16 x 2.5"
3.	120584	120584	MAX200/HT2000 machine torch main body
4.	020963	020963	Water tube, electrode cooling, standard
4.	120257	120257	Water tube, electrode cooling, extended
5.	044027	044027	O-ring: Buna 70 Duro 1.301 x .070
	104119	104119	Consumables removal tool
	027347	027347	Water tube removal tool
	023345	023345	Work lead with clamp 25' (7.6 m)
	023420	023420	Work lead with clamp 50' (15.2 m)

*Assembly includes consumables



Assembly

Stainless steel body		Description
Part number		
128365*		MAX200 machine torch assembly
120356		MAX200/HT2000 machine torch main body
028384*		Torch leads, 50' (15.2 m)
1.	020041	Torch mounting sleeve
2.	020536	Lead insulator, 9/16 x 2.5"
3.	028383*	Torch leads, 25' (7.6 m)
4.	020963	Water tube, electrode cooling, standard
4.	120257	Water tube, electrode cooling, extended
5.	044027	O-ring: Buna 70 Duro 1.301 x .070
	104119	Consumables removal tool
	027347	Water tube removal tool
	023345	Work lead with clamp 25' (7.6 m)
	023420	Work lead with clamp 50' (15.2 m)

*Assembly includes consumables

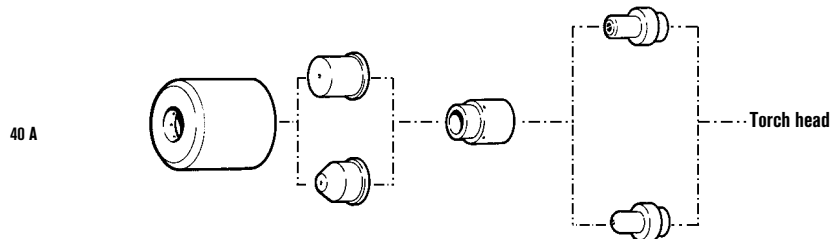


Hypertherm®

HT40/HT40C

HT40/HT40C machine torch consumables

Standard consumables



	Retaining cap	Nozzle	Swirl ring	Electrode
40 A Air	020104	020102	020101	020103
40 A Nitrogen (N₂)	020104	020102	020101	020167
Pipe saddle Air	020104	020131	020101	020103
Pipe saddle Nitrogen (N₂)	020104	020131	020101	020167
Package quantity	1	5	1	5



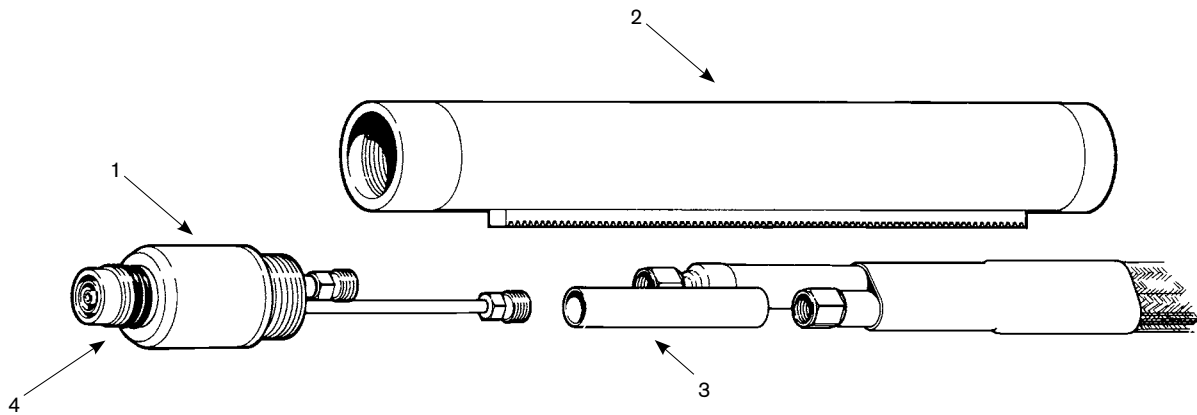
HT40C

TECHNOLOGIES

HyLife®

HT40/HT40C

Machine torch assembly



Assembly

	Part number	Description
	028287*	HT40 machine torch assembly
1.	020114	Torch main body
2.	020231	Torch position sleeve, 10-3/4" (273.05 mm) (included in 028287)
2.	020269	Torch position sleeve, 18" (457.2 mm)
3.	004302	Lead insulator
4.	044016	O-ring, Buna – N 90 Duro
	028288	Torch leads, 25' (7.6 m)
	028289	Torch leads, 35' (10.7 m)
	028290	Torch leads, 50' (15.2 m)
	023261	Work lead without clamp 25' (7.6 m)

*Assembly includes consumables

Hypertherm®

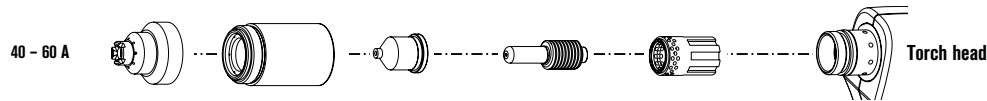
RT60 Retrofit torch

For Powermax600/800/900, MAX42/43

RT60 hand torch consumables

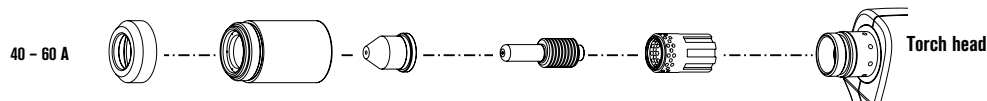


Shielded consumables



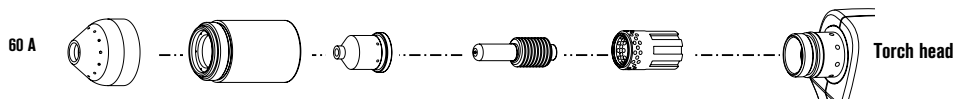
	Shield	Retaining cap	Nozzle	Electrode	Swirl ring
40 A	120929	120928	120932	120926	120925
60 A	120929	120928	120931	120926	120925
Package quantity	1	1	5	5	1

Unshielded* consumables



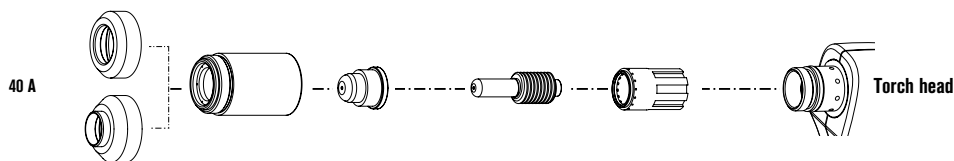
	Deflector	Retaining cap	Nozzle	Electrode	Swirl ring
40 A	120979	120928	220006	120926	120925
60 A	120979	120928	220007	120926	120925
Package quantity	1	1	5	5	1

Gouging consumables



	Shield	Retaining cap	Nozzle	Electrode	Swirl ring
60 A	120977	120928	220059	120926	120925
Package quantity	1	1	5	5	1

FineCut consumables



	Deflector	Retaining cap	Nozzle	Electrode	Swirl ring
40 A	120979	120928	220329	120926	220327
40 A CE**	220325	120928	220329	120926	220327
Package quantity	1	1	5	5	1

TECHNOLOGIES

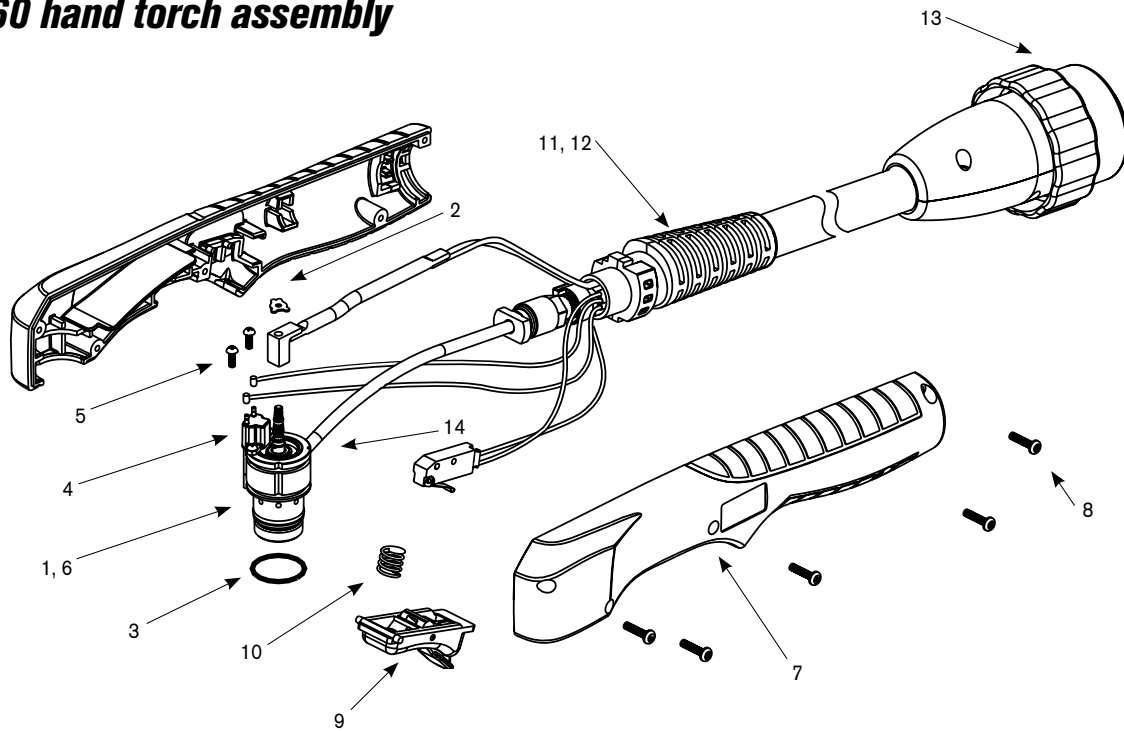
FineCut®
Coaxial-assist™ jet
Spiral groove
HyLife®
Vented shield

* In countries following CE standards, unshielded consumables may only be used in mechanized torch applications. Unshielded consumables: maintain torch-to-work distance of approximately .080" (2 mm).

** CE shield for use in countries requiring CE, CCC, GOST marks.

RT60

RT60 hand torch assembly



Assembly

Part number	Description
083215*	RT60 hand torch assembly with 25 ft (7.6 m) leads
083216*	RT60 hand torch assembly with 50 ft (15.2 m) leads
083219*	Test torch with 6' (1.8 m) leads
1. 128564	Kit: torch main body replacement (does not include cap sensor)
2. 027889	Retaining clip
3. 058519	O-ring
4. 128639	Kit: cap-off sensor replacement
5. 075571	Cap-off sensor screws
6. 128521	Kit: torch head repair (does not include head, includes screws)
7. 128644	Kit: handle
8. 075586	Handle screws
9. 002244	Safety trigger
10. 027254	Spring
11. 128922	Torch lead replacement, 25' (7.6 m)
12. 128923	Torch lead replacement, 50' (15.2 m)
13. 128926	Kit: RT60/RT60M quick disconnect repair
14. 128642	Kit: start switch replacement

*Assembly includes consumables



Hypertherm®

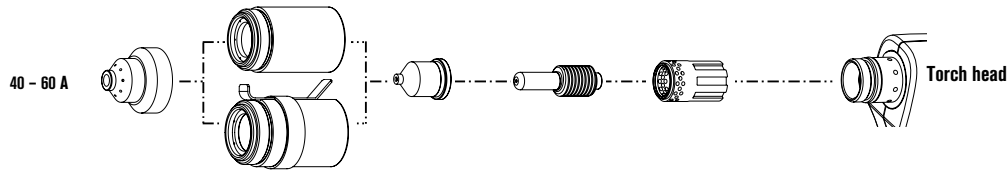
RT60M Retrofit torch

For Powermax600/800/900, MAX42/43

RT60M machine torch consumables

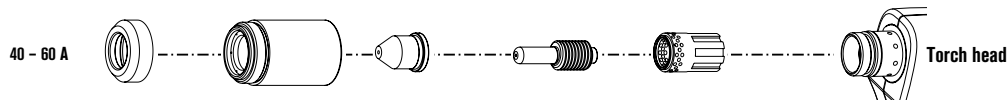


Shielded consumables



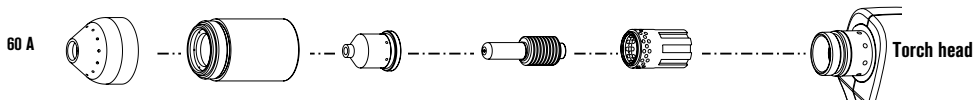
	Shield	Retaining cap	Nozzle	Electrode	Swirl ring
40 A	120930	120928	120932	120926	120925
60 A	120930	120928	120931	120926	120925
Ohmic		220061			
Package quantity	1	1	5	5	1

Unshielded* consumables



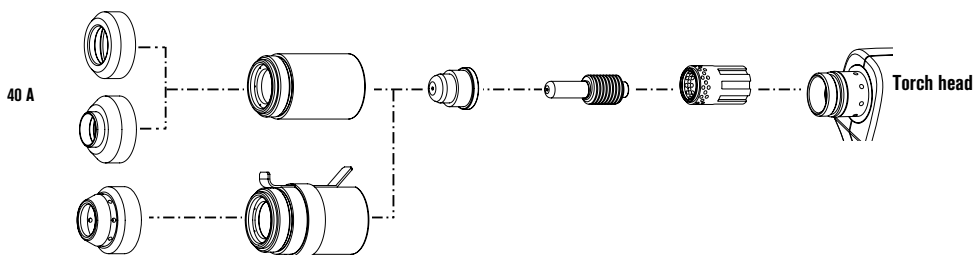
	Deflector	Retaining cap	Nozzle	Electrode	Swirl ring
40 A	120979	120928	220006	120926	120925
60 A	120979	120928	220007	120926	120925
Package quantity	1	1	5	5	1

Gouging consumables



	Shield	Retaining cap	Nozzle	Electrode	Swirl ring
60 A	120977	120928	220059	120926	120925
Package quantity	1	1	5	5	1

FineCut consumables



	Shield / Deflector	Retaining cap	Nozzle	Electrode	Swirl ring
40 A	120979	120928	220329	120926	120925
40 A CE	220325	120928	220329	120926	120925
Ohmic	220404	220061			
Package quantity	1	1	5	5	1

TECHNOLOGIES

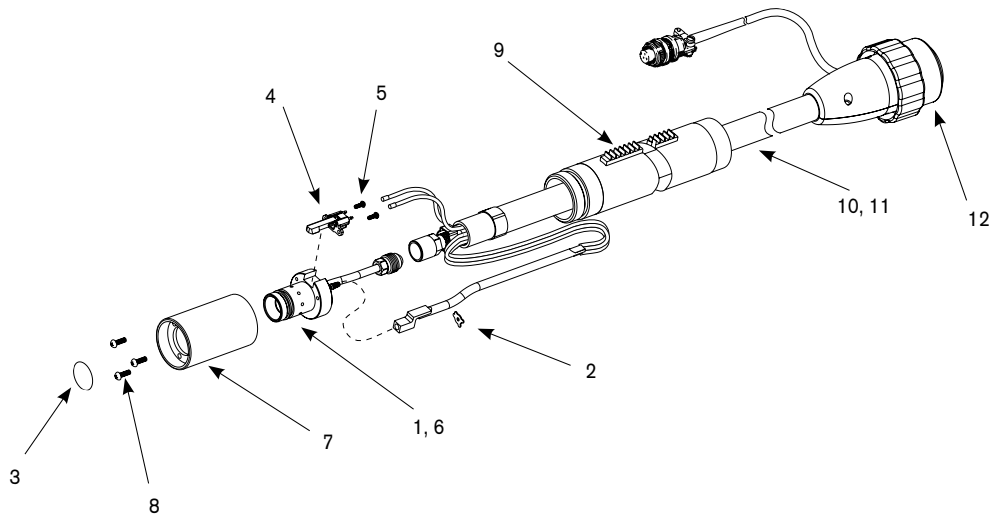
FineCut®
Coaxial-assist™ jet
Spiral groove
HyLife®
Vented shield

* In countries following CE standards, unshielded consumables may only be used in mechanized torch applications. Unshielded consumables: maintain torch-to-work distance of approximately .080" (2 mm).

Hypertherm, Powermax, FineCut, Coaxial-assist and HyLife are trademarks of Hypertherm, Inc. and may be registered in the United States and/or other countries.

RT60M

RT60M machine torch assembly



Assembly

Part number	Description
083217*	RT60M machine torch assembly with 25 ft (7.6 m) leads
083218*	RT60M machine torch assembly with 50 ft (15.2 m) leads
083219*	Test torch with 6' (1.8 m) leads
1. 128640	Kit: torch main body replacement (does not include cap sensor)
2. 027889	Retaining clip
3. 058519	O-ring
4. 128639	Kit: cap-off sensor replacement
5. 075571	Cap-off sensor screws
6. 128521	Kit: torch head repair (does not include head, includes screws)
7. 128643	Kit: torch mounting sleeve replacement
8. 075618	Torch mounting screws
9. 128710	Torch positioning sleeve
10. 128924	Torch lead replacement, 25' (7.6 m)
11. 128925	Torch lead replacement, 50' (15.2 m)
12. 128926	Kit: RT60/RT60M quick disconnect repair
128645	Torch mounting kit (for reassembly after installation)

*Assembly includes consumables



Hypertherm®

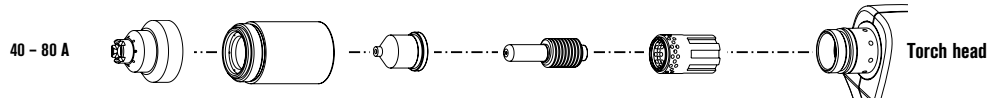
RT80 Retrofit torch

For Powermax1100

RT80 hand torch consumables

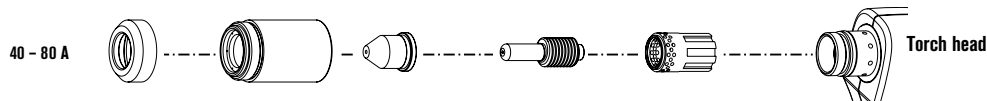


Shielded consumables



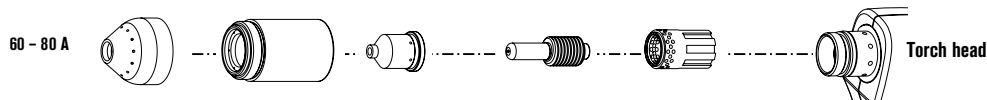
	Shield	Retaining cap	Nozzle	Electrode	Swirl ring
40 A	120929	120928	120932	120926	120925
60 A	120929	120928	120931	120926	120925
80 A	120929	120928	120927	120926	120925
Package quantity	1	1	5	5	1

Unshielded* consumables



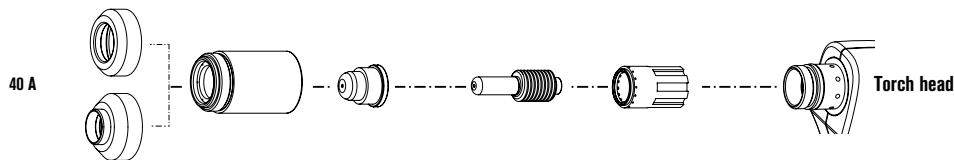
	Deflector	Retaining cap	Nozzle	Electrode	Swirl ring
40 A	120979	120928	220006	120926	120925
60 A	120979	120928	220007	120926	120925
80 A	120979	120928	120980	120926	120925
Package quantity	1	1	5	5	1

Gouging consumables



	Shield	Retaining cap	Nozzle	Electrode	Swirl ring
60 - 80 A	120977	120928	220059	120926	120925
Package quantity	1	1	5	5	1

FineCut consumables



	Deflector	Retaining cap	Nozzle	Electrode	Swirl ring
40 A	120979	120928	220329	120926	220327
40 A CE**	220325	120928	220329	120926	220327
Package quantity	1	1	5	5	1

TECHNOLOGIES

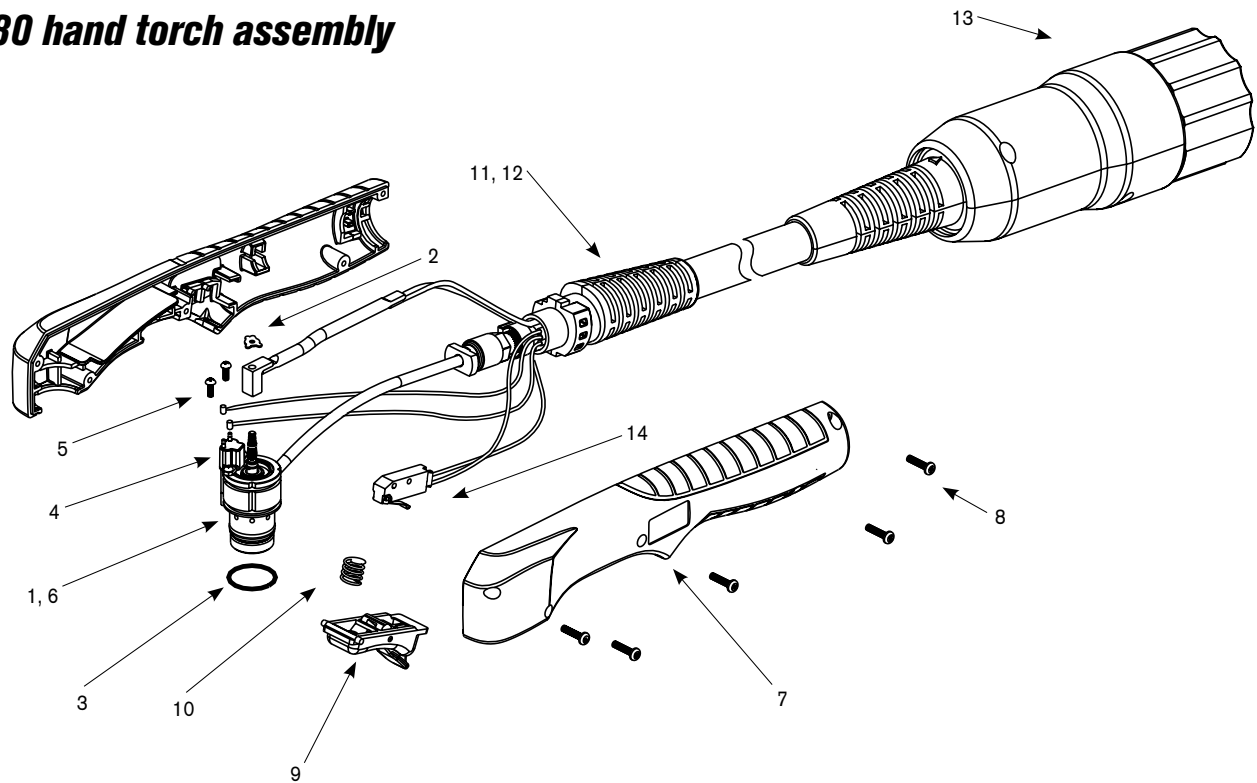
FineCut®
Coaxial-assist™ jet
Spiral groove
HyLife®
Vented shield

* In countries following CE standards, unshielded consumables may only be used in mechanized torch applications. Unshielded consumables: maintain torch-to-work distance of approximately .080" (2 mm).

** CE shield for use in countries requiring CE, CCC, GOST marks.

RT80 for Powermax 1100

RT80 hand torch assembly



Assembly

Part number	Description
087033*	RT80 hand torch assembly with 25 ft (7.6 m) leads
087034*	RT80 hand torch assembly with 50 ft (15.2 m) leads
1. 128564	Kit: torch main body replacement (does not include cap sensor)
2. 027889	Retaining clip
3. 058519	O-ring
4. 128639	Kit: cap-off sensor replacement
5. 075571	Cap-off sensor screws
6. 128521	Kit: torch head repair (does not include head, includes screws)
7. 128644	Kit: handle
8. 075586	Handle screws
9. 002244	Safety trigger
10. 027254	Trigger spring
11. 128829	Torch lead replacement, 25' (7.6 m)
12. 128830	Torch lead replacement, 50' (15.2 m)
13. 128826	Kit: quick disconnect repair
14. 128642	Kit: start switch replacement

*Assembly includes consumables



Hypertherm®

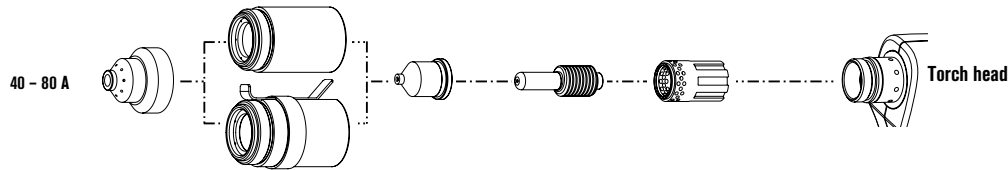
RT80M Retrofit torch

For Powermax1100

RT80M machine torch consumables

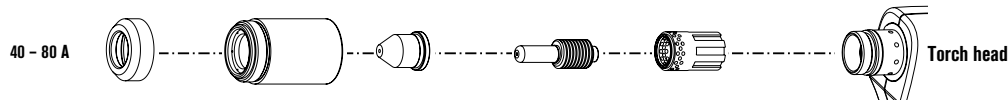


Shielded consumables



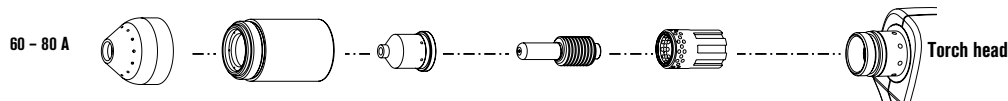
	Shield	Retaining cap	Nozzle	Electrode	Swirl ring
40 A	120930	120928	120932	120926	120925
60 A	120930	120928	120931	120926	120925
80 A	120930	120928	120927	120926	120925
Ohmic		220061			
Package quantity	1	1	5	5	1

Unshielded* consumables



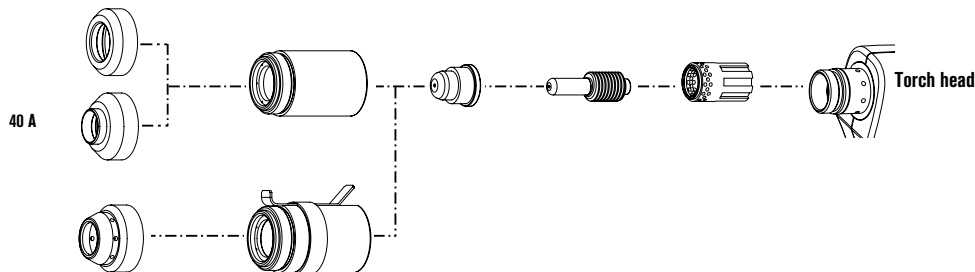
	Deflector	Retaining cap	Nozzle	Electrode	Swirl ring
40 A	120979	120928	220006	120926	120925
60 A	120979	120928	220007	120926	120925
80 A	120979	120928	120980	120926	120925
Package quantity	1	1	5	5	1

Gouging consumables



	Shield	Retaining cap	Nozzle	Electrode	Swirl ring
60 - 80 A	120977	120928	220059	120926	120925
Package quantity	1	1	5	5	1

FineCut consumables



	Shield / Deflector	Retaining cap	Nozzle	Electrode	Swirl ring
40 A	120979	120928	220329	120926	120925
40 A CE	220325	120928	220329	120926	120925
Ohmic	220404	220061			
Package quantity	1	1	5	5	1

TECHNOLOGIES

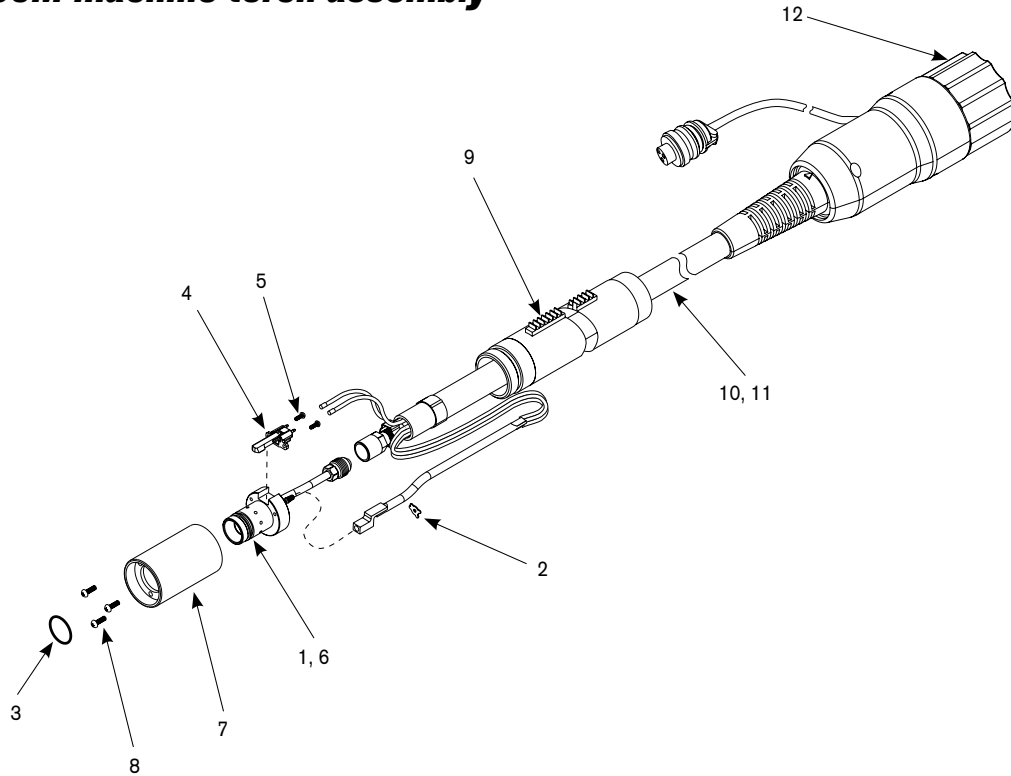
FineCut®
Coaxial-assist™ jet
Spiral groove
HyLife®
Vented shield

* In countries following CE standards, unshielded consumables may only be used in mechanized torch applications. Unshielded consumables: maintain torch-to-work distance of approximately .080" (2 mm).

Hypertherm, Powermax, FineCut, Coaxial-assist and HyLife are trademarks of Hypertherm, Inc. and may be registered in the United States and/or other countries.

RT80M for Powermax1100

RT80M machine torch assembly



Assembly

Part number	Description
087035*	RT80M machine torch assembly with 25 ft (7.6 m) leads
087036*	RT80M machine torch assembly with 50 ft (15.2 m) leads
1. 128640	Kit: torch main body replacement (does not include cap sensor)
2. 027889	Retaining clip
3. 058519	O-ring
4. 128639	Kit: cap-off sensor replacement
5. 075571	Cap-off sensor screws
6. 128521	Kit: torch head repair (does not include head, includes screws)
7. 128643	Kit: torch mounting sleeve replacement
8. 075618	Torch mounting screws
9. 128710	Torch positioning sleeve
10. 128827	Torch lead replacement, 25' (7.6 m)
11. 128828	Torch lead replacement, 50' (15.2 m)
12. 128926	Kit: quick disconnect repair
128645	Torch mounting kit (for reassembly after installation)

*Assembly includes consumables



New consumable products and training from Hypertherm!

All-in-one consumable kits – for handheld cutting



Up to
\$35
Savings
versus purchasing
contents separately

Shielded consumables

- Hypertherm's drag-cutting technology makes it easy to follow a line or template

Unshielded consumables

- With an unshielded nozzle for hard-to-reach areas and bevel cutting

Gouging consumables

- For your toughest metal-removal jobs

FineCut consumables

- For high-quality cuts on thin metal – a clean edge and a narrow kerf

FineCut consumable kits – for handheld and mechanized cutting



To learn more about kits, visit www.Hypertherm.com/consumablekits

FineCut consumables

- For high-quality cuts on thin metal – a clean edge and a narrow kerf

E-learning modules – for the best-trained sales force!



To learn more about e-learning, visit www.HyperthermCuttingInstitute.com

Retrofit Torches – for Powermax600/800/900/1100, MAX42/43 systems

Retrofit Torch RT60/RT60M



Retrofit Torch RT80/RT80M



Hypertherm®

Hypertherm, Powermax, Auto-voltage, Boost Conditioner, Coaxial-assist, Conical Flow, Dual-threshold, FineCut, Hypertherm Certified, Powercool and HyLife are trademarks of Hypertherm, Inc. and may be registered in the United States and/or other countries. For the authorized Hypertherm dealer nearest you, visit our website at www.hypertherm.com.